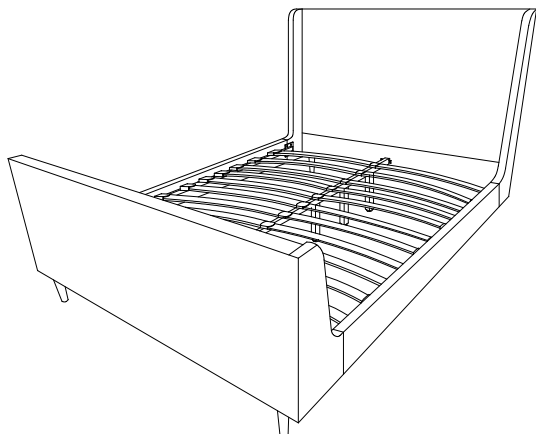









Thank you for purchasing the **QUEEN BED**!

Before you start, here are some helpful advice:

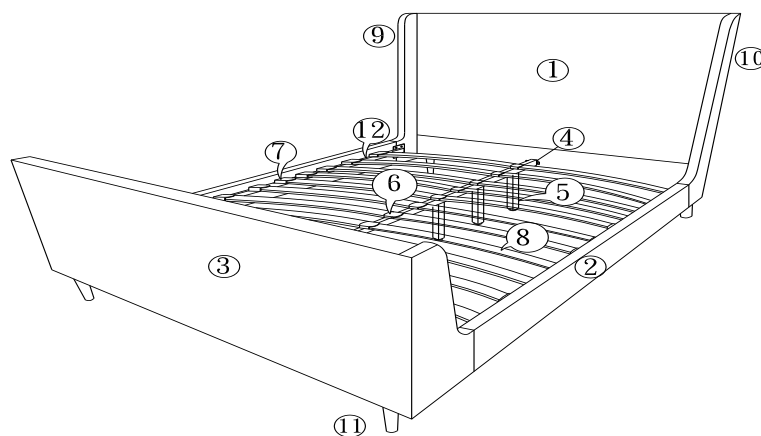
1. We suggest you spend a short time reading through this leaflet and then follow the simple step-by-step instructions.
2. Owing to the size and weight of the bed, we recommend that it is assembled by two adults, on a carpeted or padded area, in the room that it is intended for. Approximate assembly time: 30 minutes.
3. Please do not use any tools other than those provided or recommended in these instructions.
4. Please do not throw away any of the packaging or the instruction until you have checked all the components and hardware and the furniture is fully assembled. Please ensure that the packaging is disposed of in a safe and environmentally friendly way.
5. Assemble all components loosely until advised to tighten. Depending on use, it may be necessary to tighten the components from time to time, so please save the tools that have been provided.
6. Please keep all fitting out of reach of children.



Hardware:

- | | | | |
|----|---|--------------|-------------------|
| A. |  | Bolt M8x70mm | x6 |
| B. |  | Bolt M8x50mm | x10 |
| C. |  | Bolt M8x40mm | x12 |
| D. |  | Bolt M8x25mm | x8 |
| E. |  | Bolt M8x20mm | x10 |
| F. |  | Flat Washer | x46 |
| G. |  | Lock Washer | x46 |
| H. |  | Screw 25mm | x16 |
| I. |  | Allen Wrench | x1 |
| J. | | Screw Driver | x1 (Not included) |

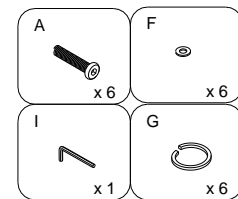
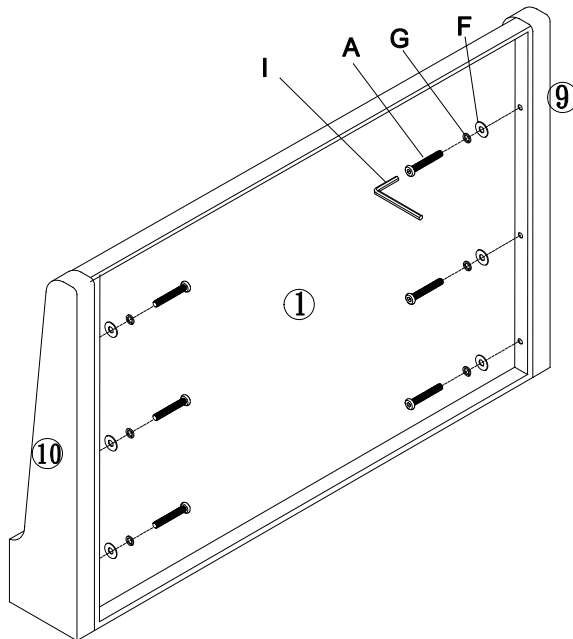
Components:



1. Headboard x1 2. Bed Rail x2 3. Footboard x1 4. Center rail x1 5. Center support leg x3 6. Center Plastic Cover
7. Side Plastic Cover x26 8. Slat x26 9. Left column x1 10. Right column x1 11. Leg x4 12. Slat support x2

STEP 1:

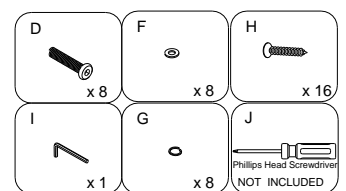
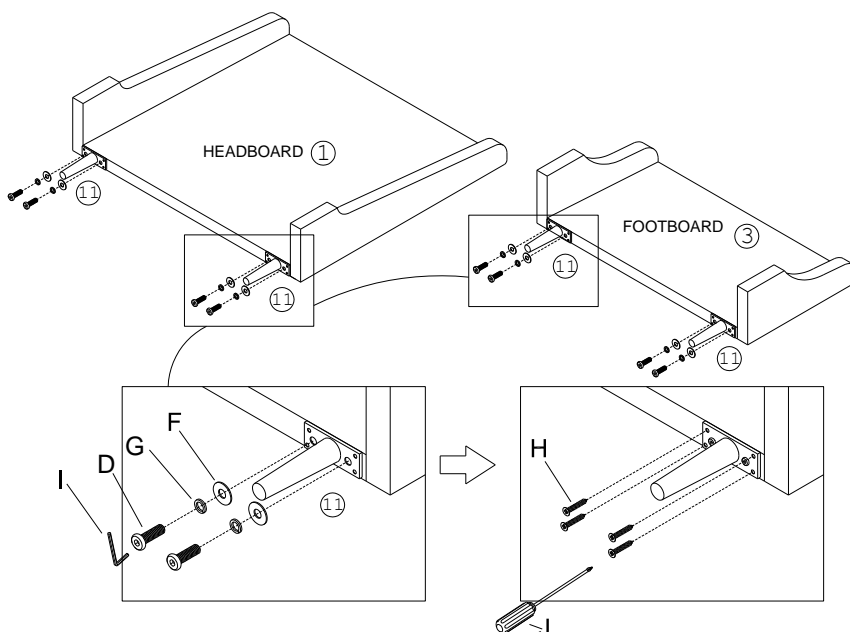
1. Attach the **Left Column (9)** & **Right Column (10)** to the side of **Headboard(1)** by using 6 pieces of **Bolts(A)**, 6 pieces of **Lock Washers(G)** and 6 pieces of **Flat Washers(F)**. Tighten Bolt by using **Allen Wrench(I)**, as shown.



Hardware & Tools required

STEP 2:

1. Turn **Headboard (1)** and **Footboard (3)** flat on the carpeted or padded area. Please take out 4 pieces of **Legs (11)** from the carton.
2. Attach one of the **Leg (11)** to the bottom of the **Footboard (3)** by using 2 pieces of **Bolts (D)**, 2 pieces of **Lock Washers(G)** and 2 pieces of **Flat Washers(F)**. Tighten Bolts by using **Allen Wrench (I)** as shown, then use 4 pieces of **Screws (H)** to screw in from the **Leg(11)** to the bottom of the **Footboard (3)** by using a **Screw Driver (J)** (Not included).
3. Repeat the same steps for the other 3 pieces of **Legs(11)**.

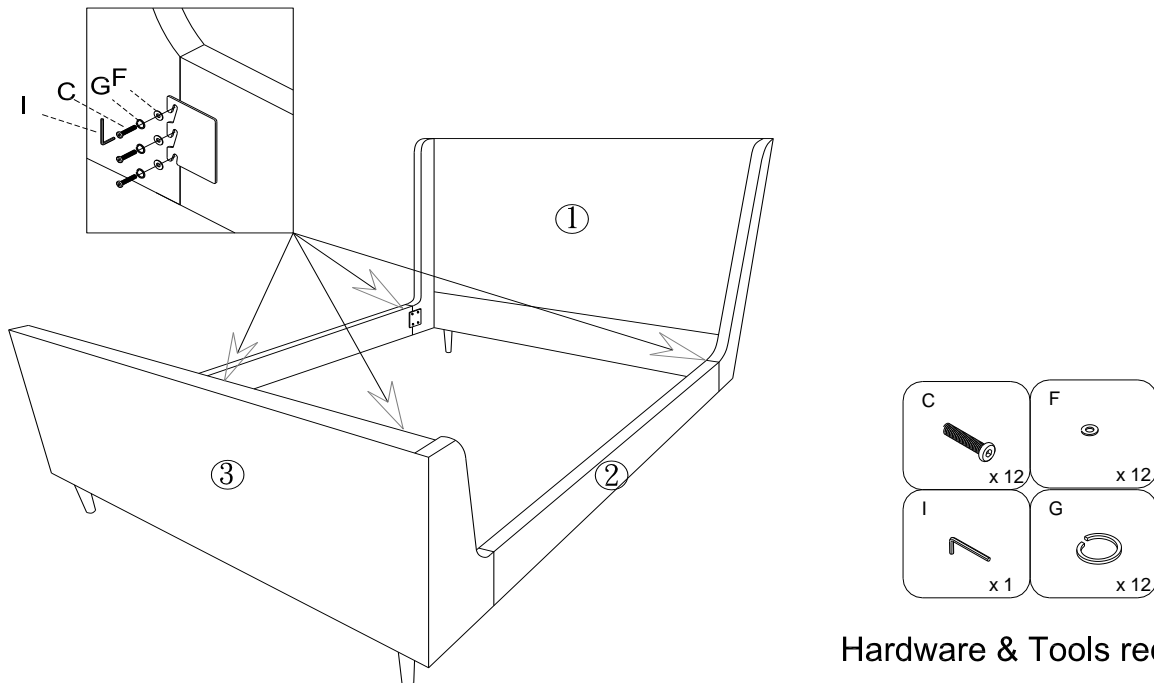


Hardware & Tools required

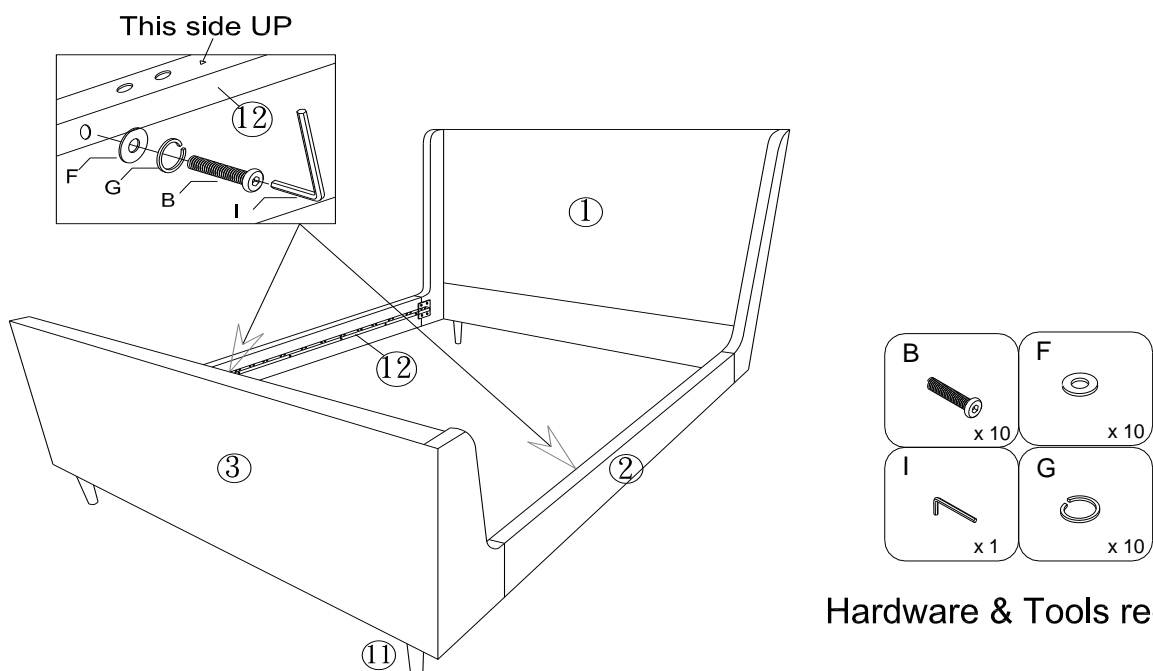
STEP 3:

Attach one end of **Bed rail (2)** to the assembled **Headboard (1)** by using 3 pieces of **Bolts (C)**, 3 pieces of **Lock Washers (G)** and 3 pieces of **Flat Washers (F)**. Do not fully tighten Bolts at this step.

Repeat the same steps for the other end of **Bed Rail (2)** to the **Footboard (3)** and **Headboard (1)**. Finally tighten all the Bolts fully.

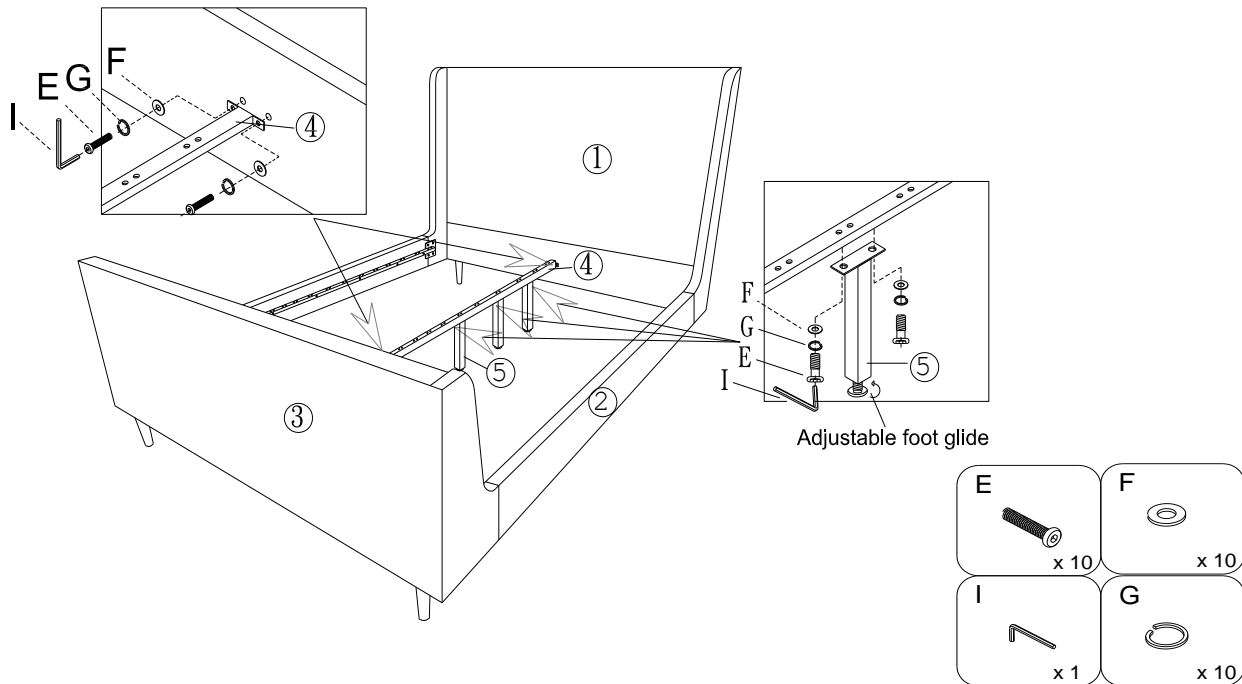
**STEP 4:**

1. Attach one of the **Slat Support (12)** to one of the middle of the **Bed rail (2)** by using 5 pieces of **Bolts (B)**, 5 pieces of **Lock Washers (G)** and 5 pieces of **Flat Washers (F)**. Please pay attention that the **Slat Support (12)** with holes is on the top. Tighten Bolt by using **Allen Wrench (I)** as shown.
2. Repeat the same steps for the other **Slat Support (12)** to the other **Bed Rail (2)**.



STEP 5:

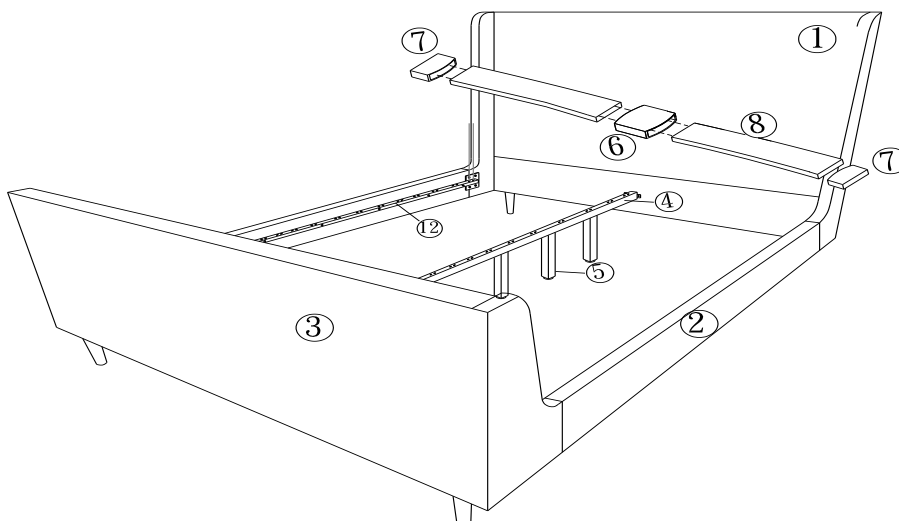
1. Attach each **Center Support Leg (5)** to **Center Rail (4)** by using 2 pieces of **Bolts(E)**, 2 pieces of **Lock Washers(G)** and 2 pieces of **Flat Washers(F)**. Tighten Bolt by using **Allen Wrench (I)** fully as shown.
2. Attach the assembled **Center Rail (4) & Center Support Leg (5)** to the **Headboard (1) & Footboard (3)** by using 4 pieces of **Bolts (E)**, 4 pieces of **Lock Washers (G)** and 4 pieces of **Flat Washers (F)**. Tighten Bolt by using **Allen Wrench (I)** fully as shown.
3. Please note the bottom of each **Center Support Leg (5)** has the adjustable foot glide which you can adjust the height if necessary.

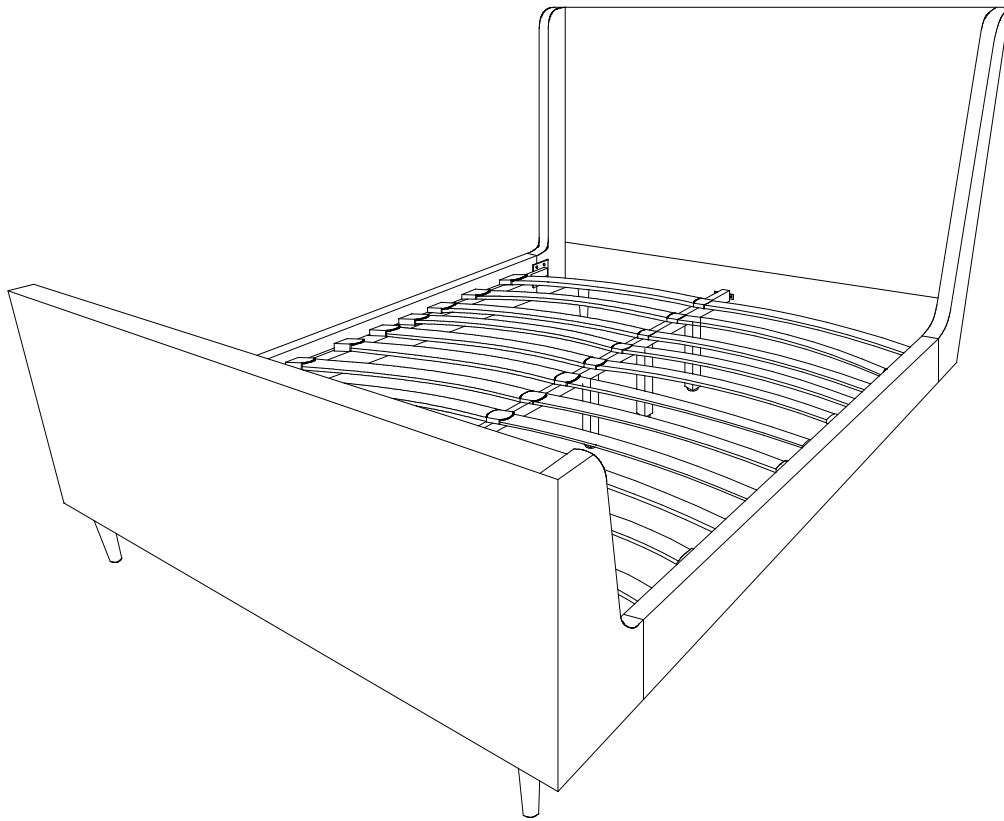
**Hardware & Tools required****STEP 6:**

Insert 2 pieces of **Side Plastic Cover (7)** into each end of 2 pieces of **Slats (8)** as shown.

Insert the other end of the **Slats (8)** into 1 piece of **Center Plastic Cover (6)** as shown.

Insert the assembled **Side Plastic Covers (7)** into the corresponding holes on the **Slat Support (12)** of the **Bed Rail (2)**, and the assembled **Center Plastic Cover (6)** into the corresponding holes on **Center Rail (4)** as shown. Repeat the same steps for the remaining 24 pieces of **Slats (8)**.





Assembly is complete. The Queen Bed is ready to enjoy now!