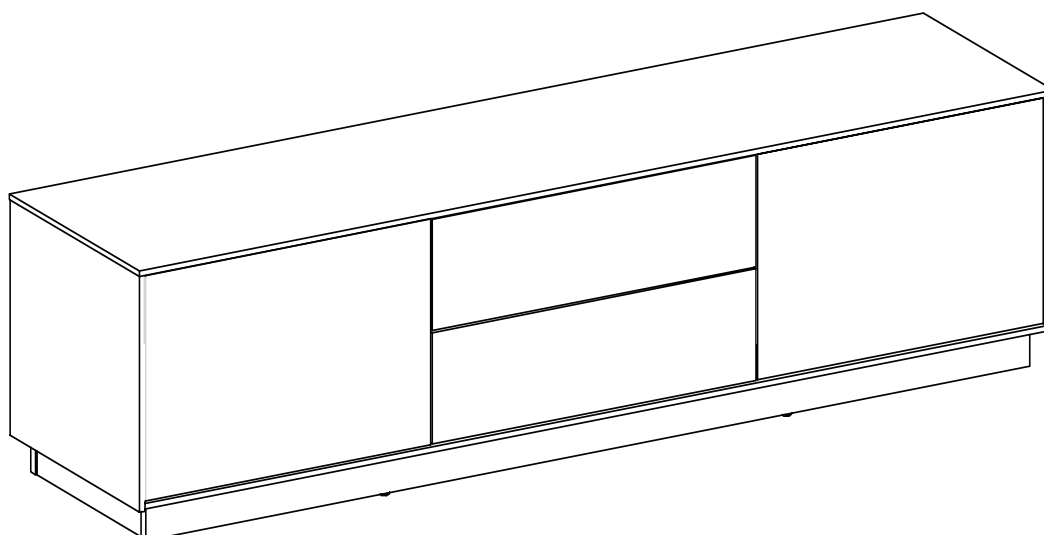


ASSEMBLY INSTRUCTIONS

EEI-6598

V1.10.10.23



Questions? Contact us!

609.256.9000 • cs@modway.com
www.modway.com

***modway**

Let's get started!

*modway



Read through all of the instructions before starting



Care instructions are listed in the last step of this manual



Approx. 45 minutes assembly time



Make sure you have all parts and components before discarding any packing materials



2 people recommended for assembly

Only use hand tools to assemble this item. Do not use power tools. Do not tighten bolts or screws completely until all hardware is lined up and inserted into the holes.

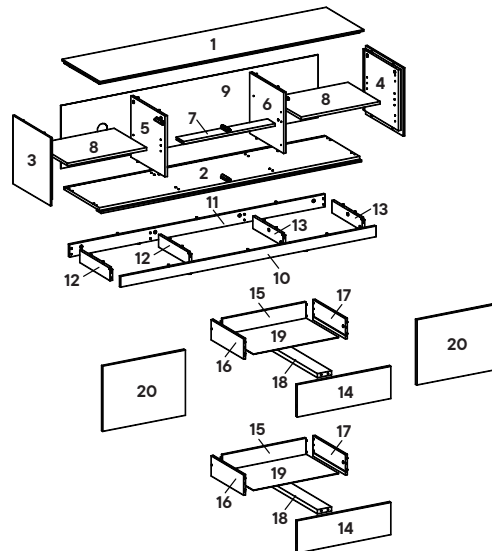
Do not over-tighten screws and bolts to avoid stripping the hardware or cracking the item.

Assemble your item on a flat, carpeted area, with plenty of space to work. This will prevent damage and scratches to your floors or the item while you're assembling the product.

Keep all components and packaging out of reach of children or animals to avoid risk of choking or suffocation.

Furniture components:

1	Top Board	x1	11	Bottom Rear Support	x1
2	Bottom Board	x1	12	Bottom Left Support	x2
3	Left Board	x1	13	Bottom Right Support	x2
4	Right Board	x1	14	Front Drawer	x2
5	Divider Left Board	x1	15	Rear Drawer	x2
6	Divider Right Board	x1	16	Left Drawer	x2
7	Drawer Support	x1	17	Right Drawer	x2
8	Adjustable Shelf	x2	18	Bottom Support Drawer	x2
9	Backboard	x1	19	Bottom Drawer	x2
10	Bottom Front Support	x1	20	Door	x2



Provided hardware:

A		Cam Lock Ø15 mm	x26	I		Screw M4 x 19 mm	x22
B		Cam Bolt Ø7.5 x 32 mm	x32	J		Door Hinge	x4
C		Cam Cover Ø17 mm	x10	K		Drawer Rail	x2
D		Plastic Dowel M8 x 32 mm x60		L		Cam Lock Ø12 mm	x6
E		Screw M6 x 13 mm	x8	M		Push To Open	x4
F		Screw M10 x 33.5 mm	x18	N		Cam Cover Ø15 mm	x4
G		Screw M6 x 8 mm	x16	O		Shelf Pin M7 x 16.5 mm	x8
H		Backply Stopper	x22				

What you need:

Phillips Head Screwdriver

Wait!

Missing parts or hardware? Need assistance?
Contact us before returning your item. We're here to help!
609.256.9000 • cs@modway.com

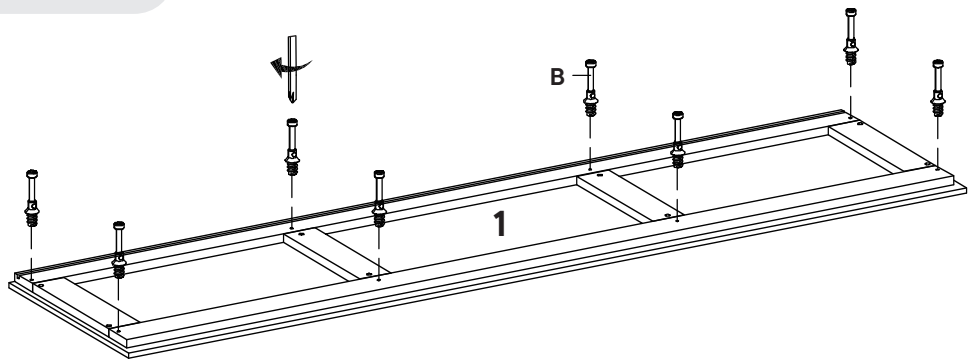
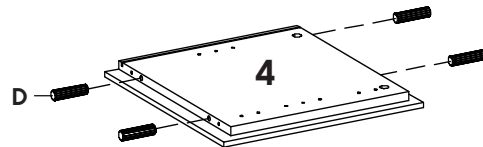
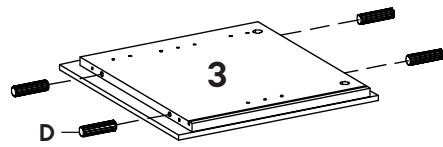
Step 1

HARDWARE

- B** Cam Bolt $\varnothing 7.5 \times 32$ mm x8
- D** Plastic Dowel M8 x 32 mm x8

COMPONENTS

- 1** Top Board x1
- 3** Left Board x1
- 4** Right Board x1



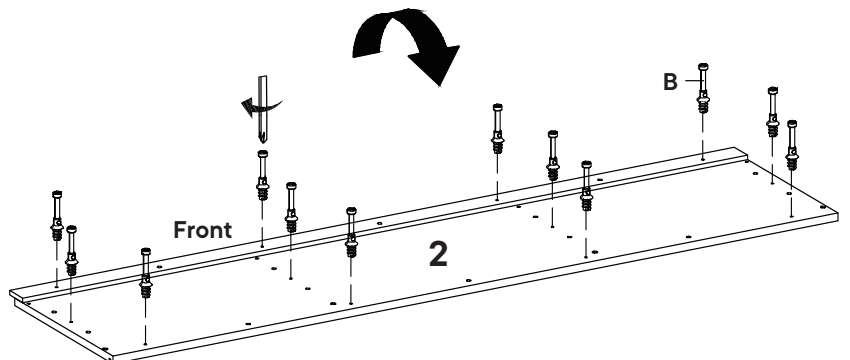
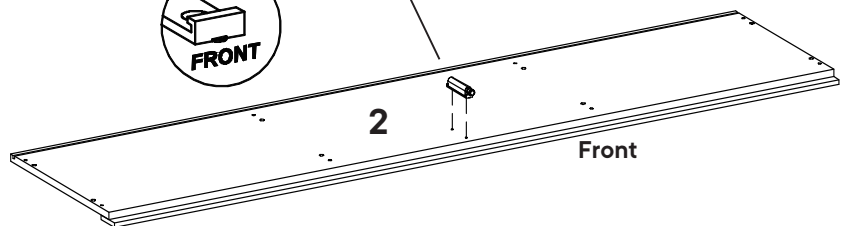
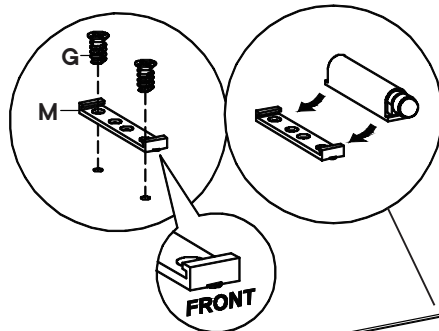
Step 2

HARDWARE

- B** Cam Bolt $\varnothing 7.5 \times 32$ mm x12
- G** Screw M6 x 8 mm x2
- M** Push To Open x1

COMPONENTS

- 2** Bottom Board x1



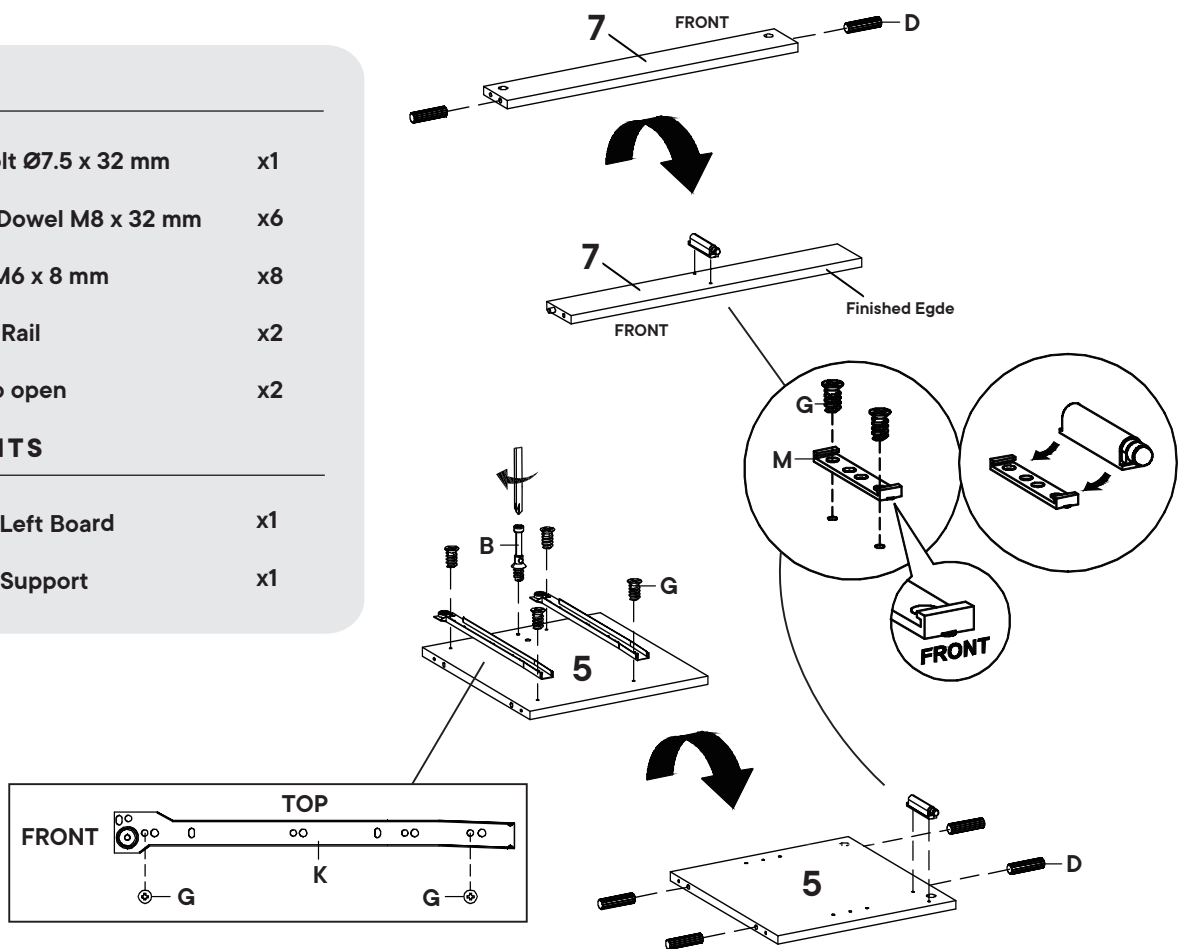
Step 3

HARDWARE

- B** Cam Bolt $\varnothing 7.5 \times 32$ mm x1
- D** Plastic Dowel M8 x 32 mm x6
- G** Screw M6 x 8 mm x8
- K** Drawer Rail x2
- M** Push To open x2

COMPONENTS

- 5** Divider Left Board x1
- 7** Drawer Support x1



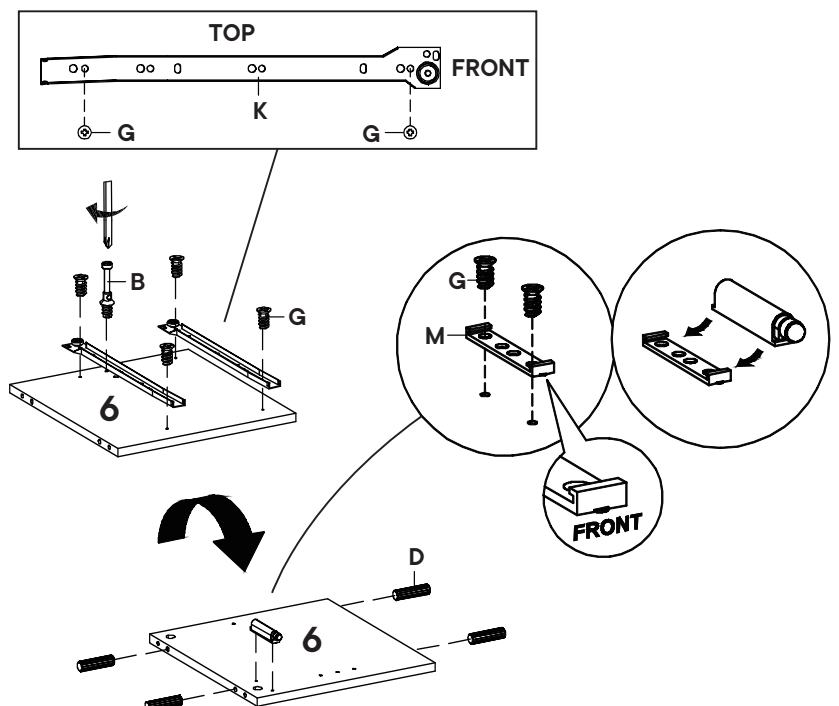
Step 4

HARDWARE

- B** Cam Bolt $\varnothing 7.5 \times 32$ mm x1
- D** Plastic Dowel M8 x 32 mm x4
- G** Screw M6 x 8 mm x6
- K** Drawer Rail x2
- M** Push To open x1

COMPONENTS

- 6** Divider Right Board x1



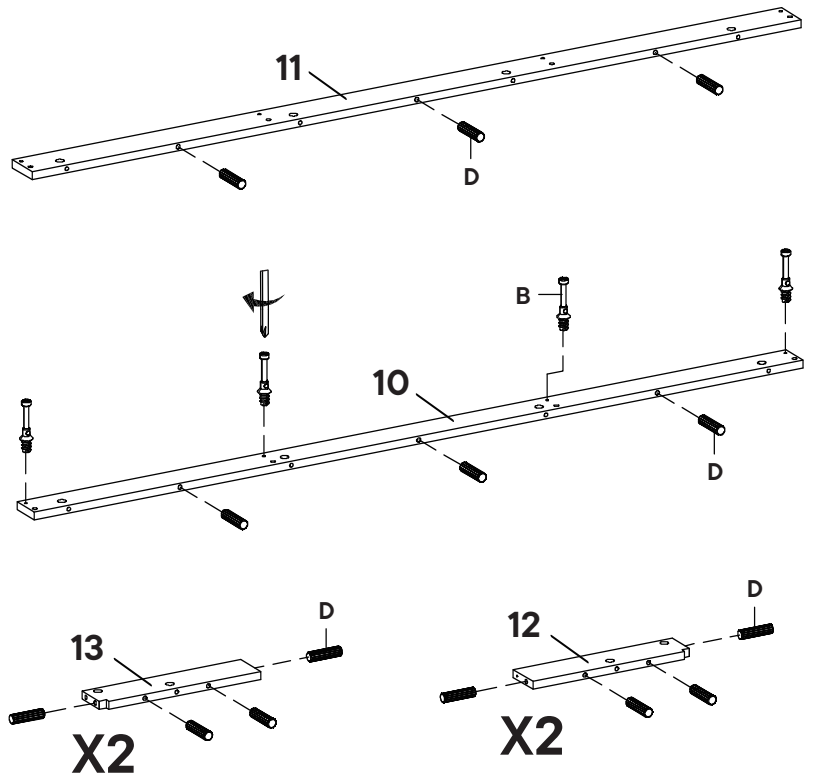
Step 5

HARDWARE

- B** Cam Bolt Ø7.5 x 32 mm x4
- D** Plastic Dowel M8 x 32 mm x22

COMPONENTS

- 10** Bottom Front Support x1
- 11** Bottom Rear Support x1
- 12** Bottom Left Support x2
- 13** Bottom Right Support x2



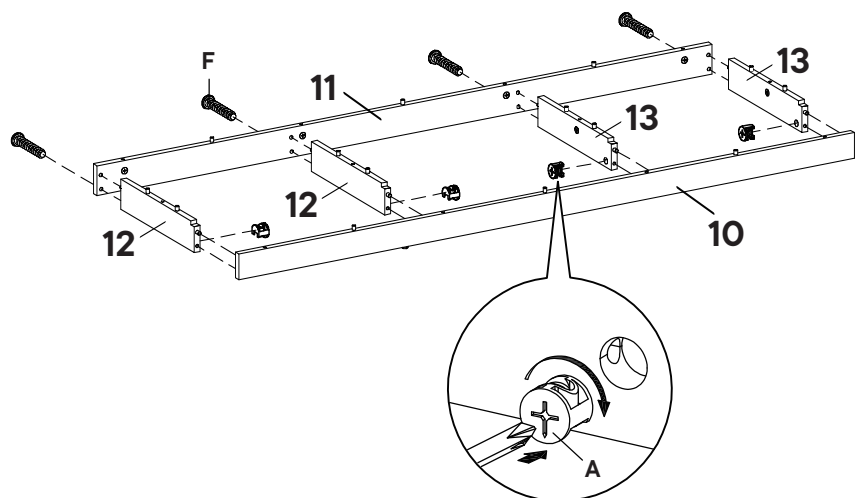
Step 6

HARDWARE

- A** Cam Lock Ø15 mm x4
- F** Screw M10 x 33.5 mm x4

COMPONENTS

- 10** Bottom Front Support x1
- 11** Bottom Rear Support x1
- 12** Bottom Left Support x2
- 13** Bottom Right Support x2



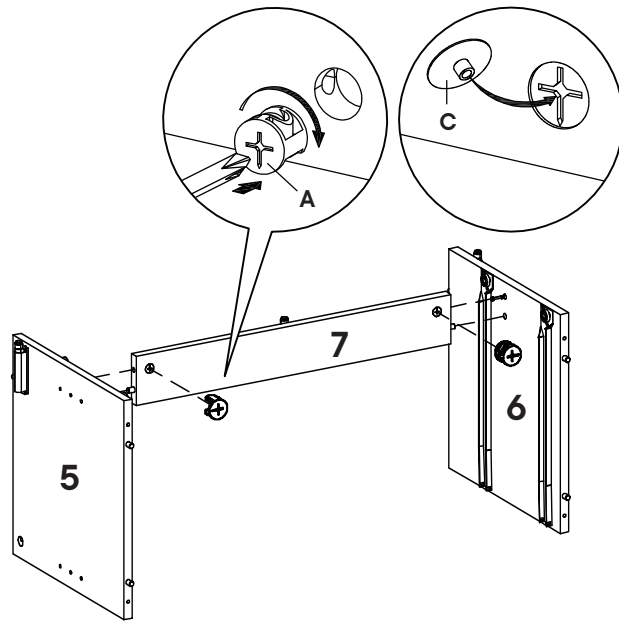
Step 7

HARDWARE

- A** Cam Lock Ø15 mm x2
- C** Cam Cover Ø17 mm x2

COMPONENTS

- 5** Divider Left Board x1
- 6** Divider Right Board x1
- 7** Drawer Support x1



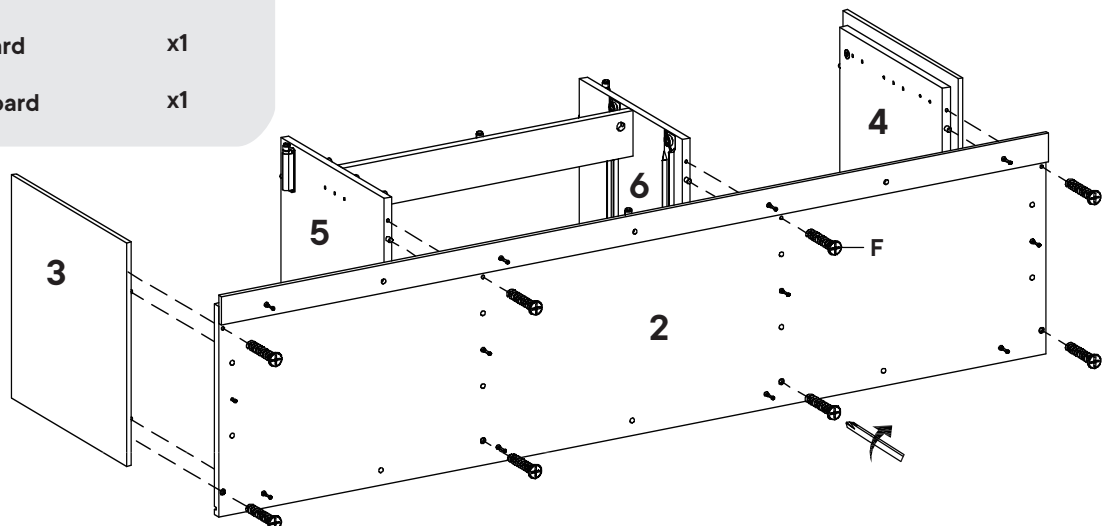
Step 8

HARDWARE

- F** Screw M10 x 33.5 mm x8

COMPONENTS

- 2** Bottom Board x1
- 3** Left Board x1
- 4** Right Board x1
- 5** Divider Left Board x1
- 6** Divider Right Board x1



Step 9

HARDWARE

A Cam Lock Ø15 mm x12

COMPONENTS

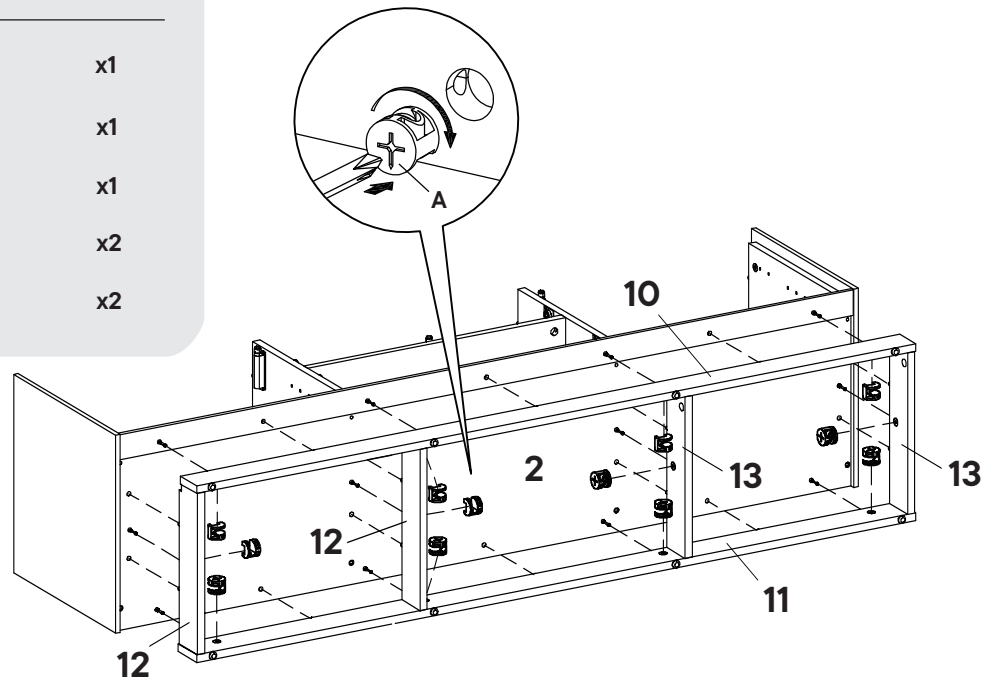
2 Bottom Board x1

10 Bottom Front Support x1

11 Bottom Rear Support x1

12 Bottom Left Support x2

13 Bottom Right Support x2



Step 10

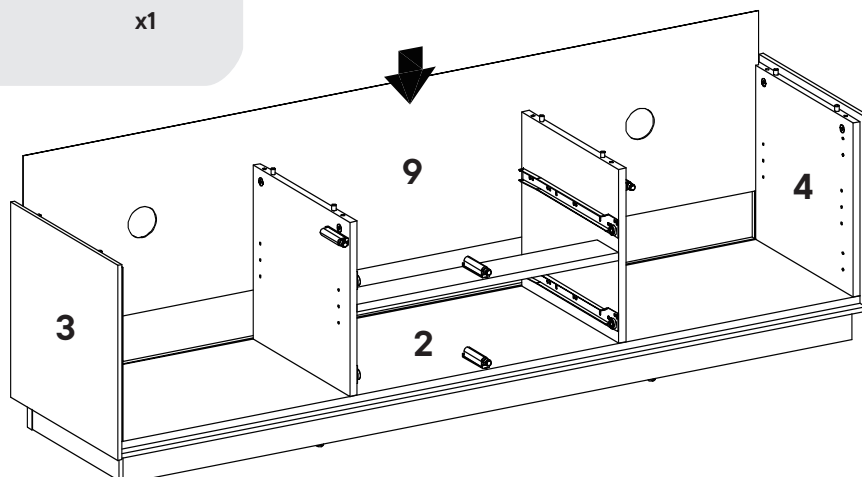
COMPONENTS

2 Bottom Board x1

3 Left Board x1

4 Right Board x1

9 Backboard x1



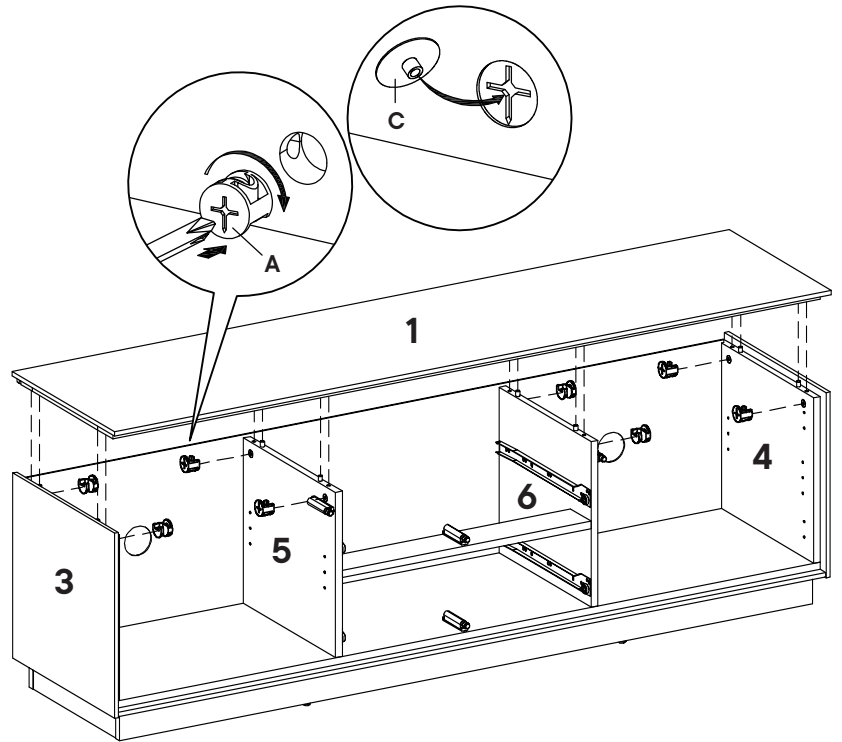
Step 11

HARDWARE

- Ⓐ Cam Lock Ø15 mm x8
- Ⓒ Cam Cover Ø17 mm x8

COMPONENTS

- ① Top Board x1
- ③ Left Board x1
- ④ Right Board x1
- ⑤ Divider Left Board x1
- ⑥ Divider Right Board x1



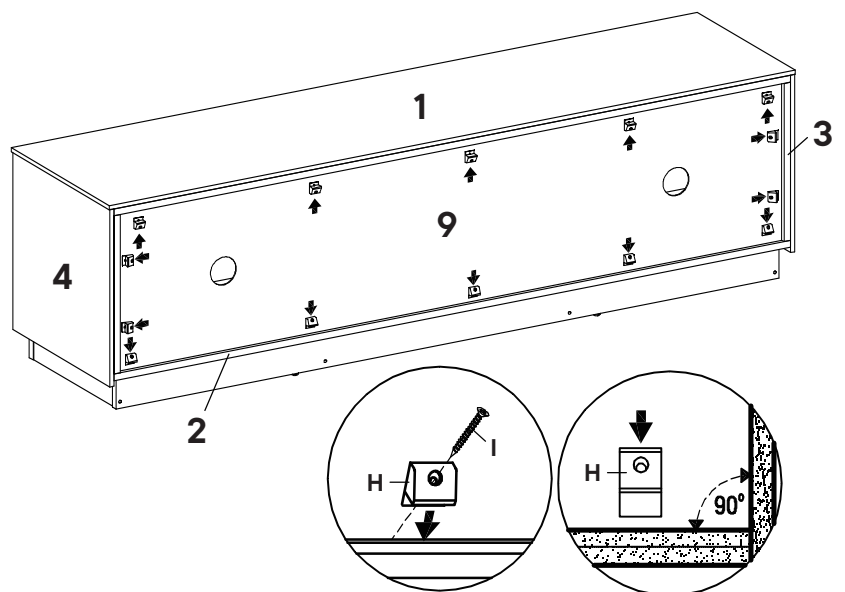
Step 12

HARDWARE

- Ⓗ Backply Stopper x14
- Ⓘ Screw M4 x 19 mm x14

COMPONENTS

- ① Top Board x1
- ② Bottom Board x1
- ③ Left Board x1
- ④ Right Board x1
- ⑨ Backboard x1



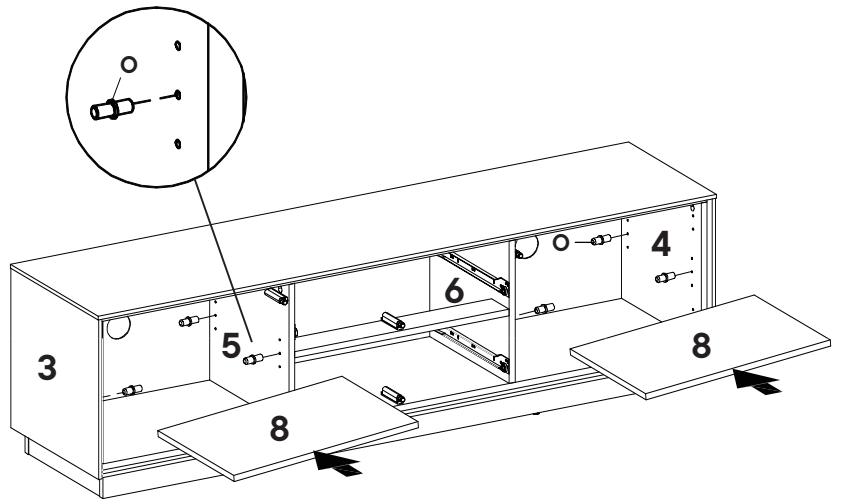
Step 13

HARDWARE

- Shelf Pin M7 x 16.5 mm x8

COMPONENTS

- ③ Left Board x1
- ④ Right Board x1
- ⑤ Divider Left Board x1
- ⑥ Divider Right Board x1
- ⑧ Adjustable Shelf x2



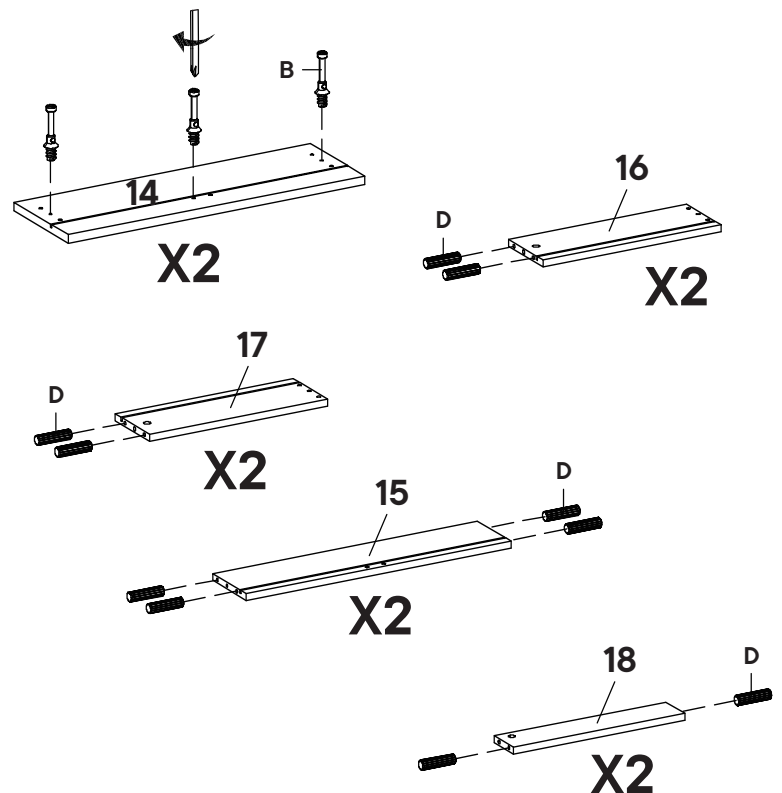
Step 14

HARDWARE

- Ⓑ Cam Bolt Ø7.5 x 32 mm x6
- Ⓓ Plastic Dowel M8 x 32 mm x20

COMPONENTS

- ⑭ Front Drawer x2
- ⑮ Rear Drawer x2
- ⑯ Left Drawer x2
- ⑰ Right Drawer x2
- ⑱ Bottom Support Drawer x2



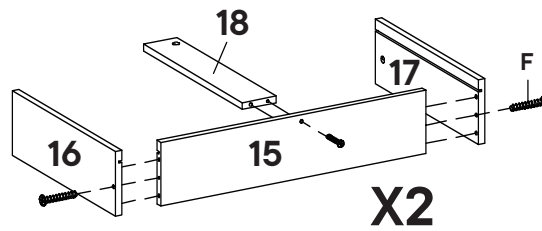
Step 15

HARDWARE

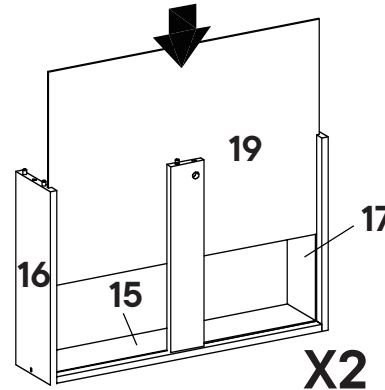
- F** Screw M10 x 33.5 mm x6

COMPONENTS

- 15** Rear Drawer x2
- 16** Left Drawer x2
- 17** Right Drawer x2
- 18** Bottom Support Drawer x2
- 19** Bottom Drawer x2



X2



X2

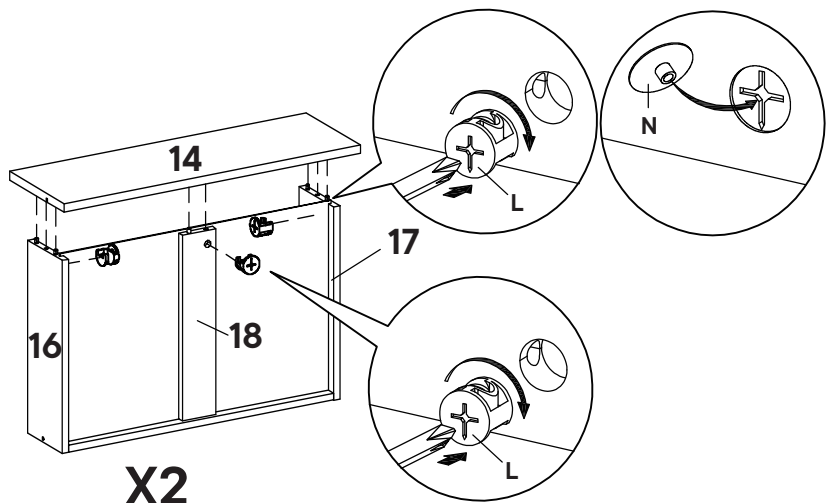
Step 16

HARDWARE

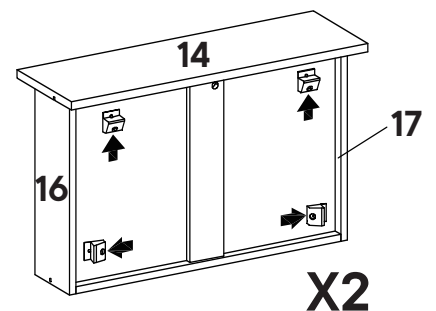
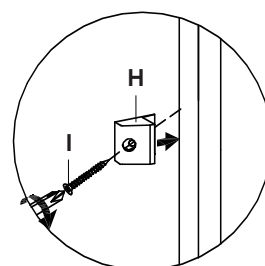
- H** Backply Stopper x8
- I** Screw M4 x 19 mm x8
- L** Cam Lock Ø12 mm x6
- N** Cam Cover Ø15 mm x4

COMPONENTS

- 14** Front Drawer x2
- 16** Left Drawer x2
- 17** Right Drawer x2
- 18** Bottom Support Drawer x2



X2



X2

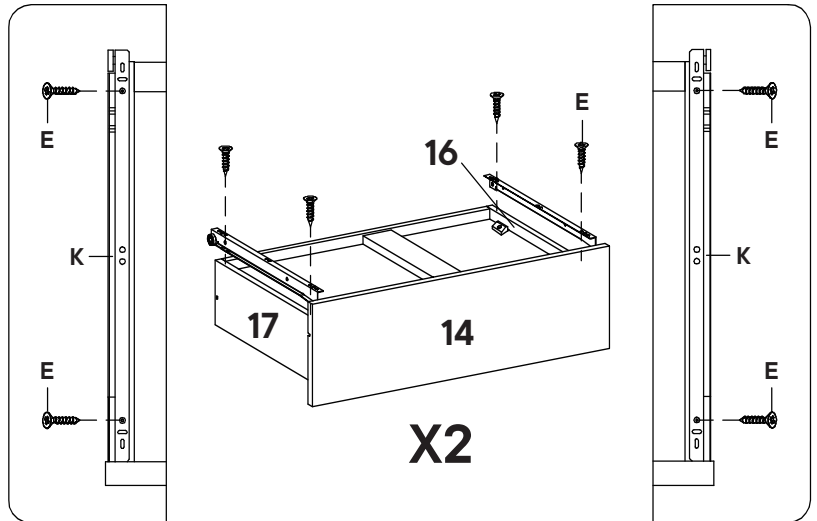
Step 17

HARDWARE

- E** Screw M6 x 13 mm x8
- K** Drawer Rail x2

COMPONENTS

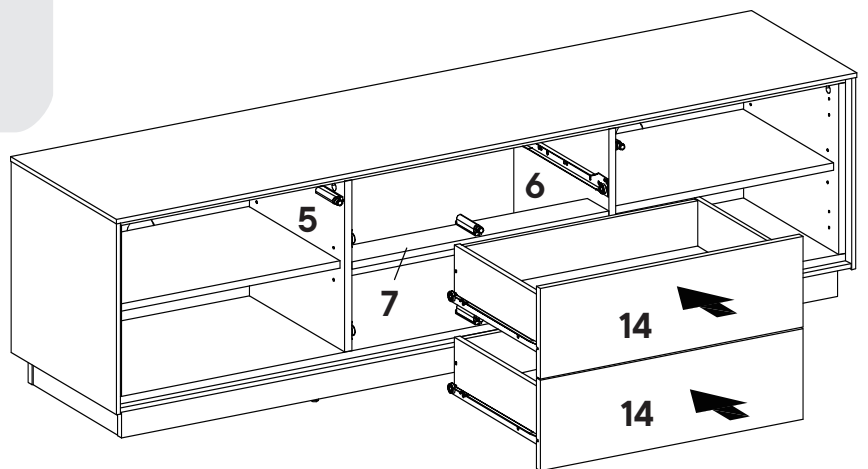
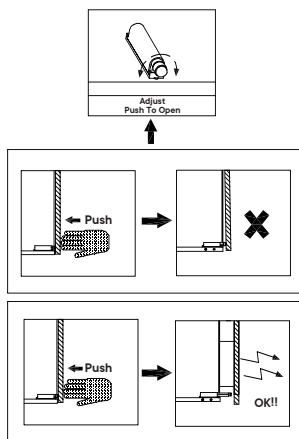
- 16** Left Drawer x2
- 17** Right Drawer x2



Step 18

COMPONENTS

- 5** Divider Left Board x1
- 6** Divider Right Board x1
- 7** Drawer Support x1
- 14** Front Drawer x2



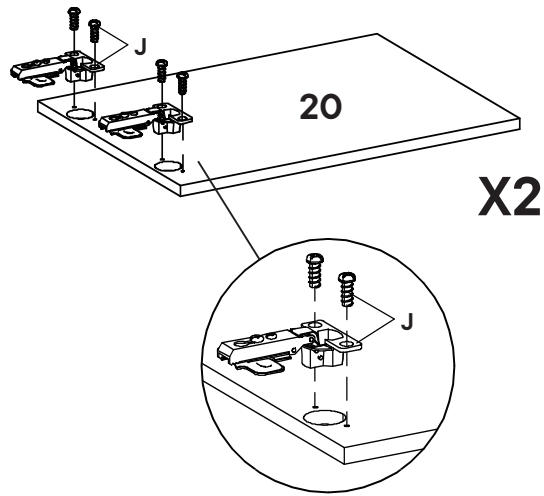
Step 19

HARDWARE

J Door Hinge x4

COMPONENTS

20 Door x2



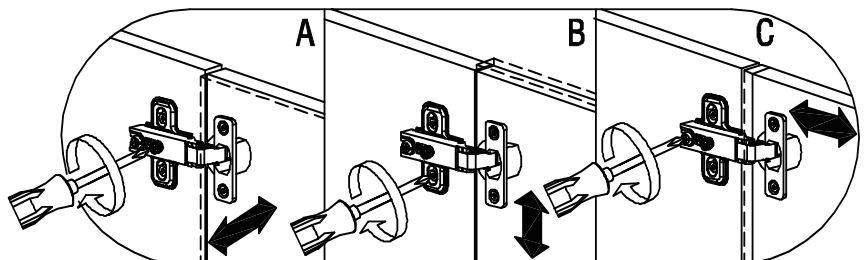
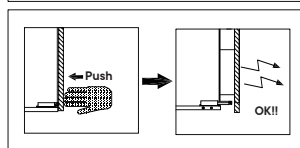
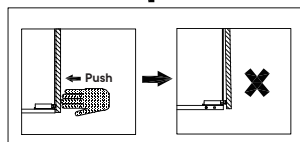
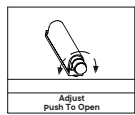
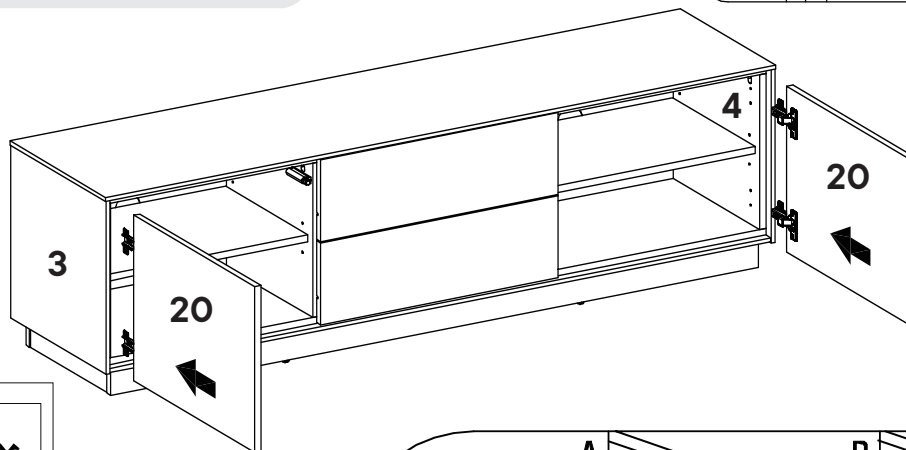
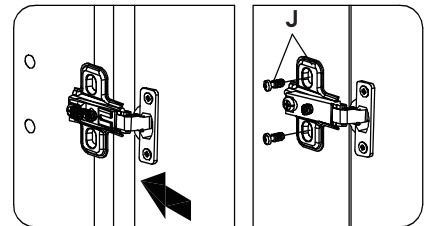
Step 20

COMPONENTS

3 Left Board x1

4 Right Board x1

20 Door x2



Great job!

TV Stand assembly is complete.

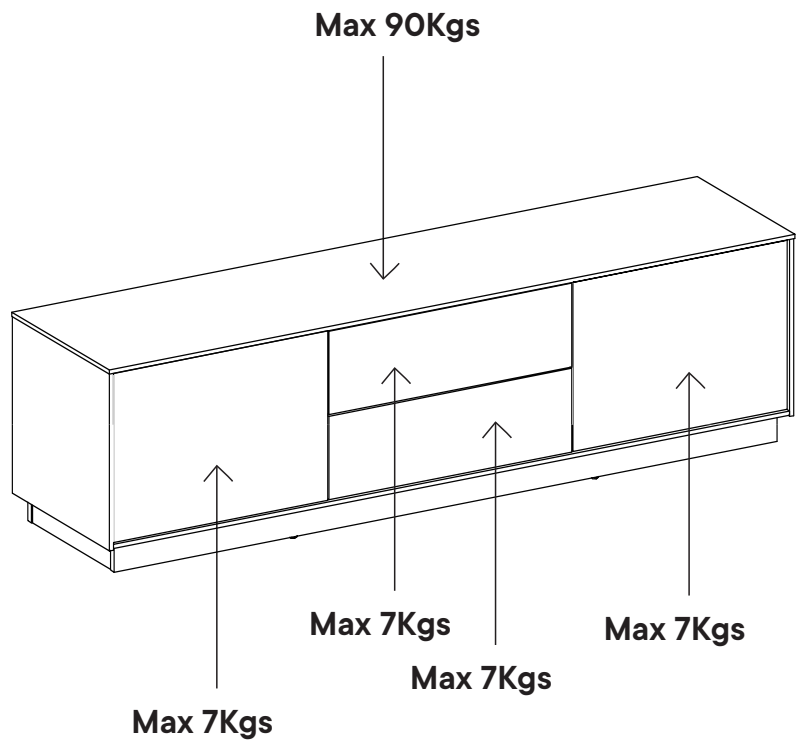
♥ CARING FOR YOUR ITEM

Indoor use only.

Not contract grade.

Clean using a non-abrasive cloth and a mild cleaner.

Never use harsh chemicals, as they could damage the finish or integrity of the item.



CONNECT WITH US!

Tag us @modway_furniture and #modway for a chance to be featured.