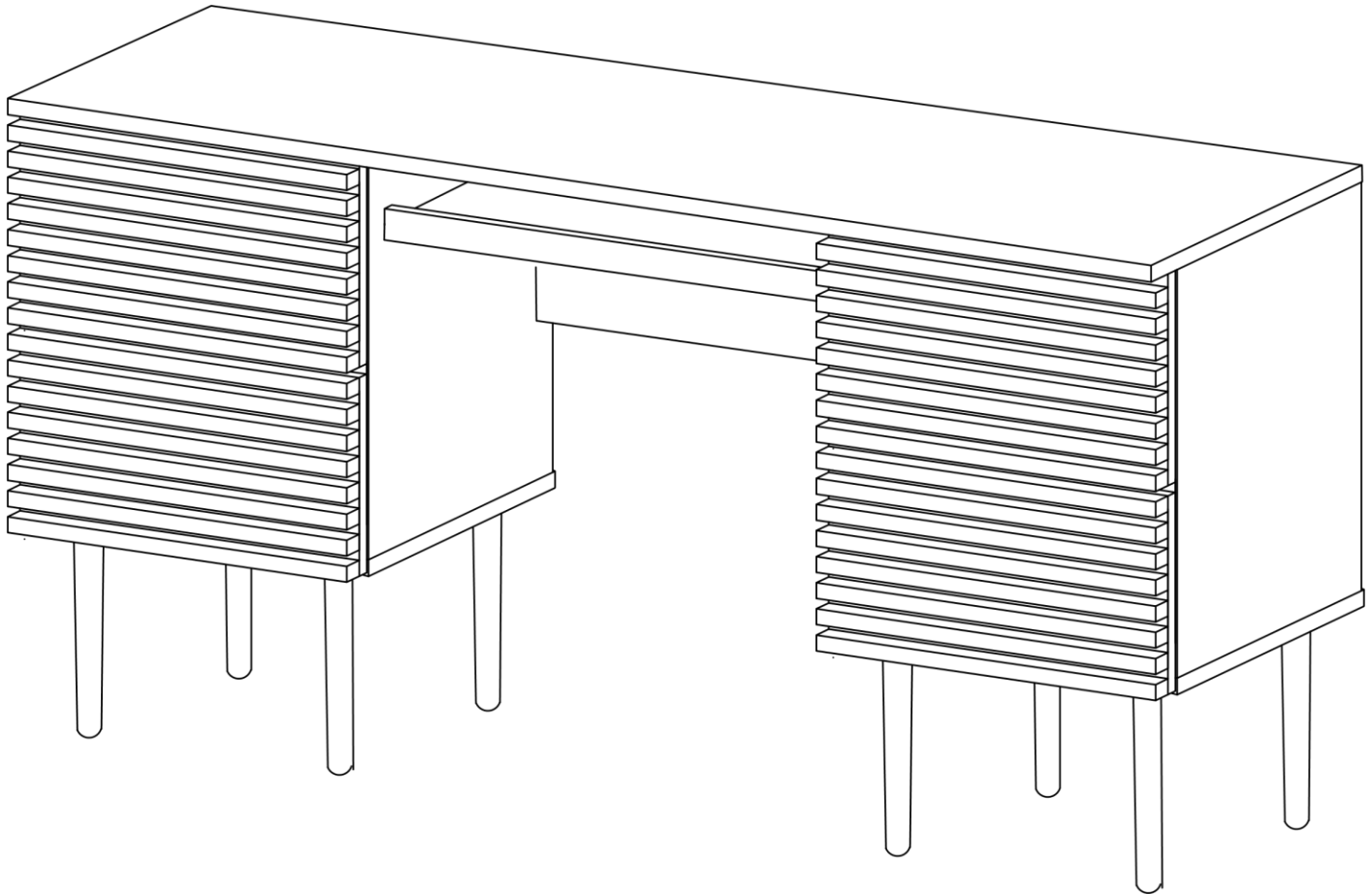


ASSEMBLY INSTRUCTIONS

EEI-6254

V1.13.01.23



Questions? Contact us!

609.256.9000 • cs@modway.com

www.modway.com

***modway**

Let's get started!



Read through all of the instructions before starting



Care instructions are listed in the last step of this manual



Approx. 60 minutes assembly time



Make sure you have all parts and components before discarding any packing materials



2 people recommended for assembly

Only use hand tools to assemble this item. Do not use power tools. Do not tighten bolts or screws completely until all hardware is lined up and inserted into the holes.

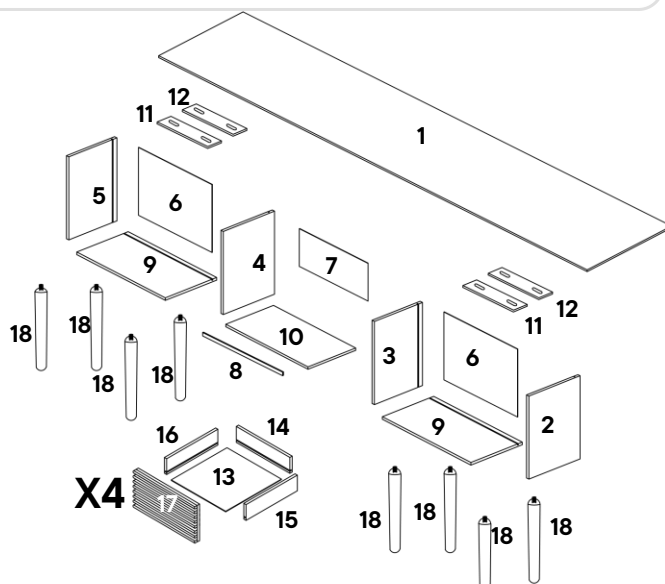
Do not over-tighten screws and bolts to avoid stripping the hardware or cracking the item.

Assemble your item on a flat, carpeted area, with plenty of space to work. This will prevent damage and scratches to your floors or the item while you're assembling the product.

Keep all components and packaging out of reach of children or animals to avoid risk of choking or suffocation.

Furniture components:

1	Top Panel	x1	10	Keyboard Drawer Base	x1
2	Right Side Panel	x1	11	Body Support A	x2
3	Middle Right Panel	x1	12	Body Support B	x2
4	Middle Left Panel	x1	13	Drawer Base	x4
5	Left Side Panel	x1	14	Drawer Back	x4
6	Back Panel	x2	15	Drawer Right	x4
7	Middle Back Panel	x1	16	Drawer Left	x4
8	Front Skirt	x1	17	Drawer Head	x4
9	Bottom Panel	x2	18	Leg	x8



Provided hardware:

A	CSK Cap Wood Screw M6 x 50mm	x8	J	Drawer Runner Right	x5
B	Wooden Dowel Ø8 x 30mm	x22	K	Wooden Dowel Ø6 x 30mm	x32
C	Titus 9499 Cam Ø15 x 12mm	x15	L	Titus 5575 Cam Ø12 x 9.9mm	x8
D	Cam Bolt- Ø6 x 32mm	x23	M	Plate Nut M8	x8
E	Floor Glide-B321	x8	N	JCBC M6 x 30mm	x8
F	C/board Screw Ø3.5 x 16mm	x102	O	Cam Lock Cap (1042)	x4
G	C/board Runner Left	x5	P	C/board Screw Ø4 x 38mm	x8
H	C/board Runner Right	x5	Q	Allen Key	x1
I	Drawer Runner Left	x5	R	Flat Washer	x8

What you need:



Missing parts or hardware? Need assistance?

Contact us before returning your item. We're here to help!
609.256.9000 • cs@modway.com

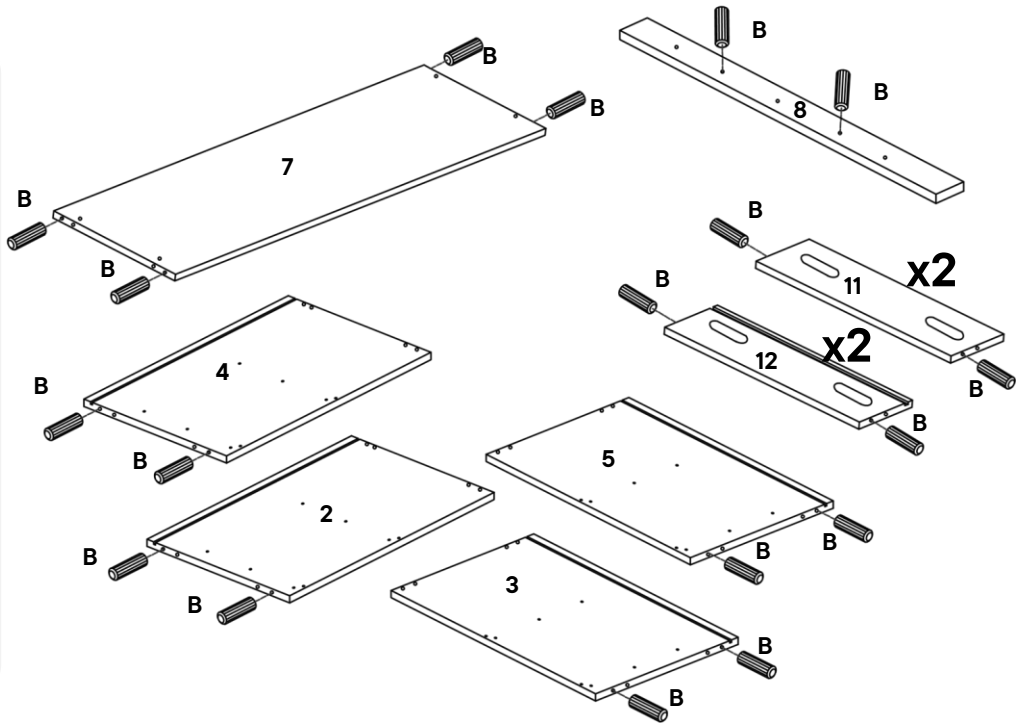
Step 1

HARDWARE

B Wooden Dowel Ø8 x 30mm x22

COMPONENTS

- 2** Right Side Panel x1
- 3** Middle Right Panel x1
- 4** Middle Left Panel x1
- 5** Left Side Panel x1
- 7** Middle Back Panel x1
- 8** Front Skirt x1
- 11** Body Support A x2
- 12** Body Support B x2



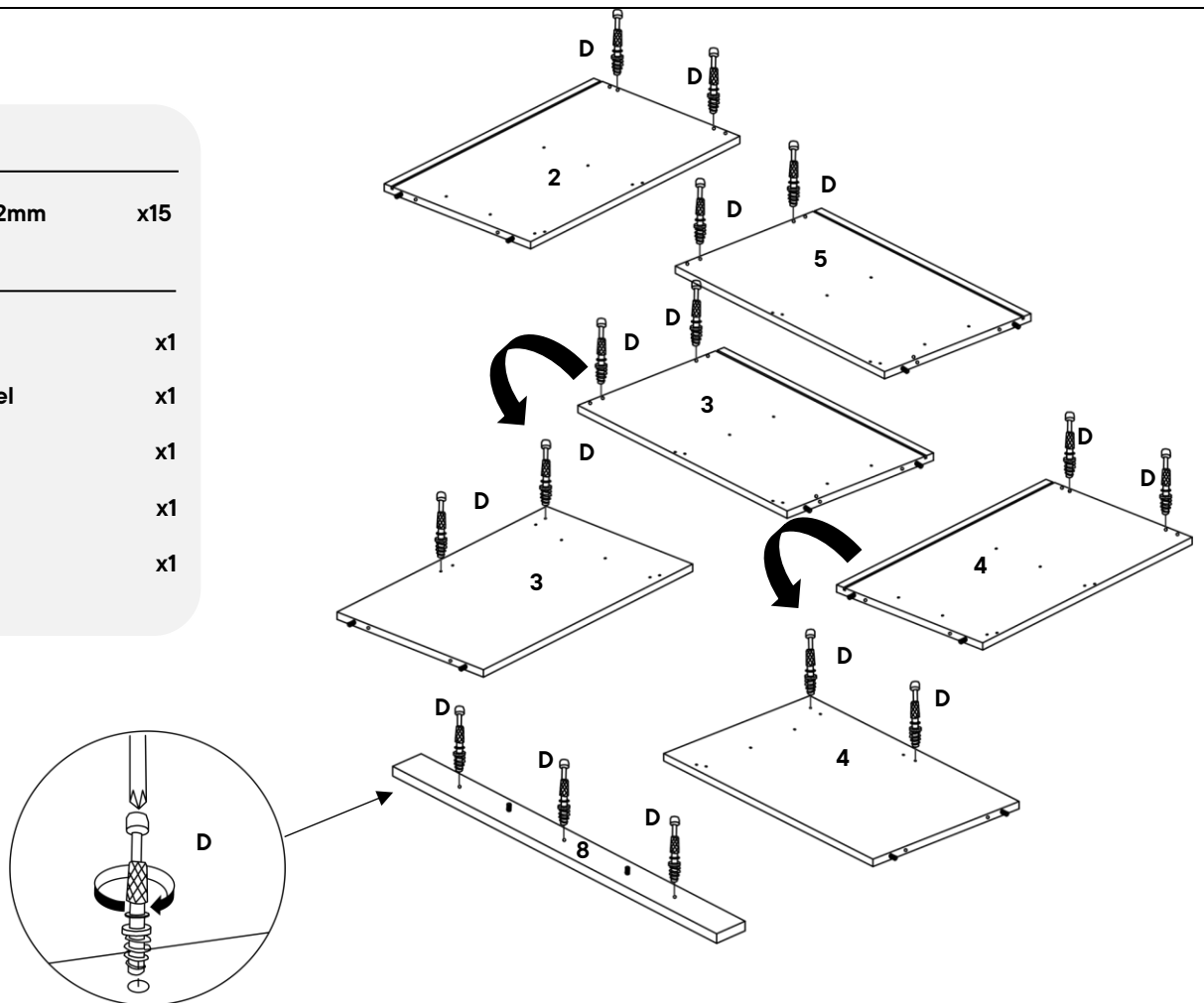
Step 2

HARDWARE

D Cam Bolt- Ø6 x 32mm x15

COMPONENTS

- 2** Right Side Panel x1
- 3** Middle Right Panel x1
- 4** Middle Left Panel x1
- 5** Left Side Panel x1
- 8** Front Skirt x1



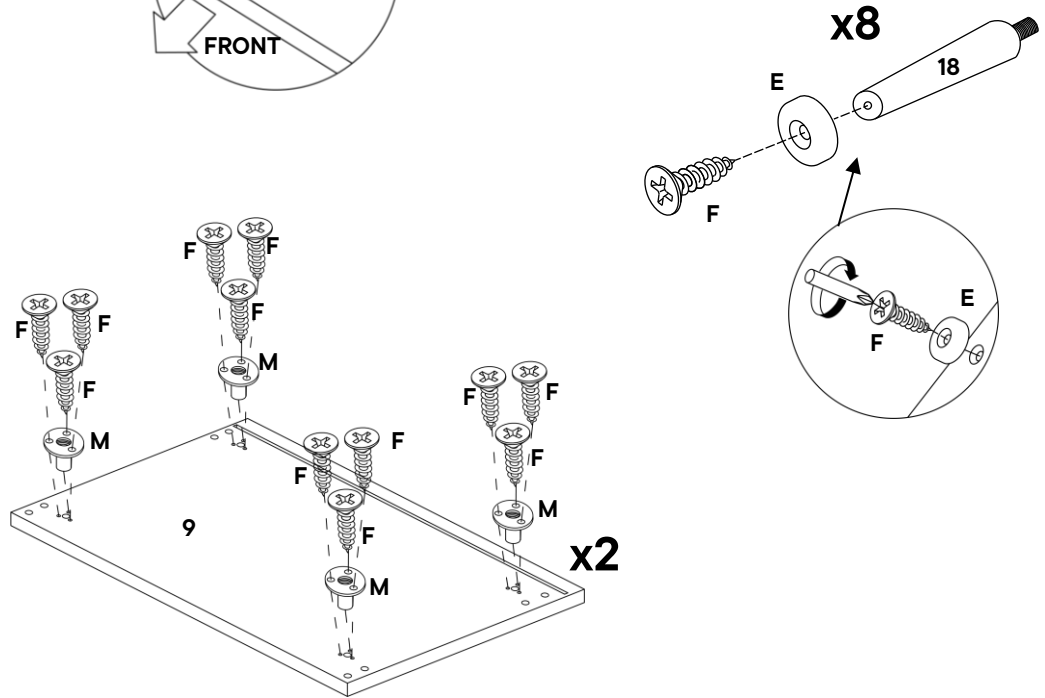
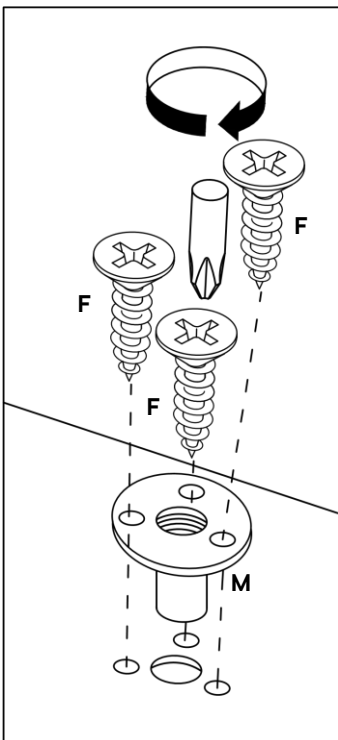
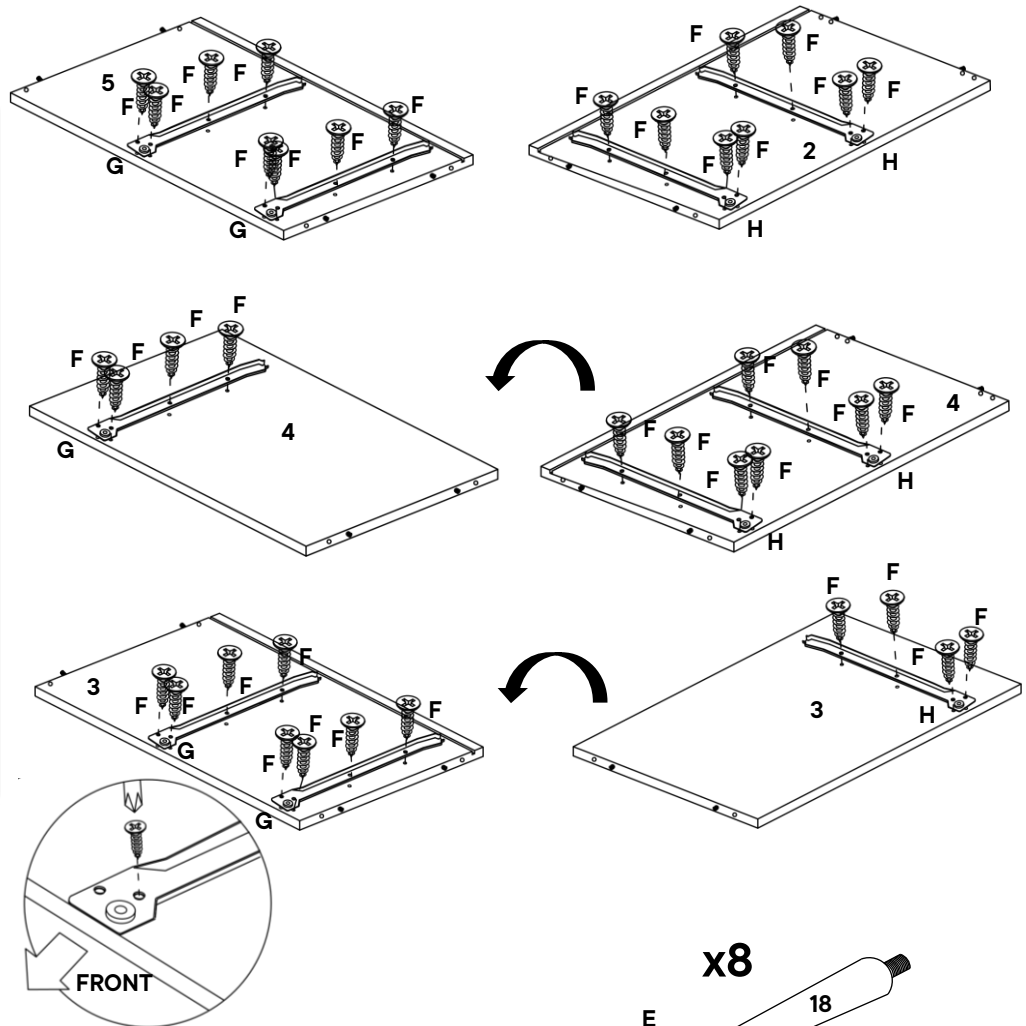
Step 3

HARDWARE

- E** Floor Glide-B321 x8
- F** C/board Screw $\varnothing 3.5 \times 16\text{mm}$ x72
- G** C/board Runner Left x5
- H** C/board Runner Right x5
- M** Plate Nut M8 x8

COMPONENTS

- 2** Right Side Panel x1
- 3** Middle Right Panel x1
- 4** Middle Left Panel x1
- 5** Left Side Panel x1
- 9** Bottom Panel x2
- 18** Leg x8



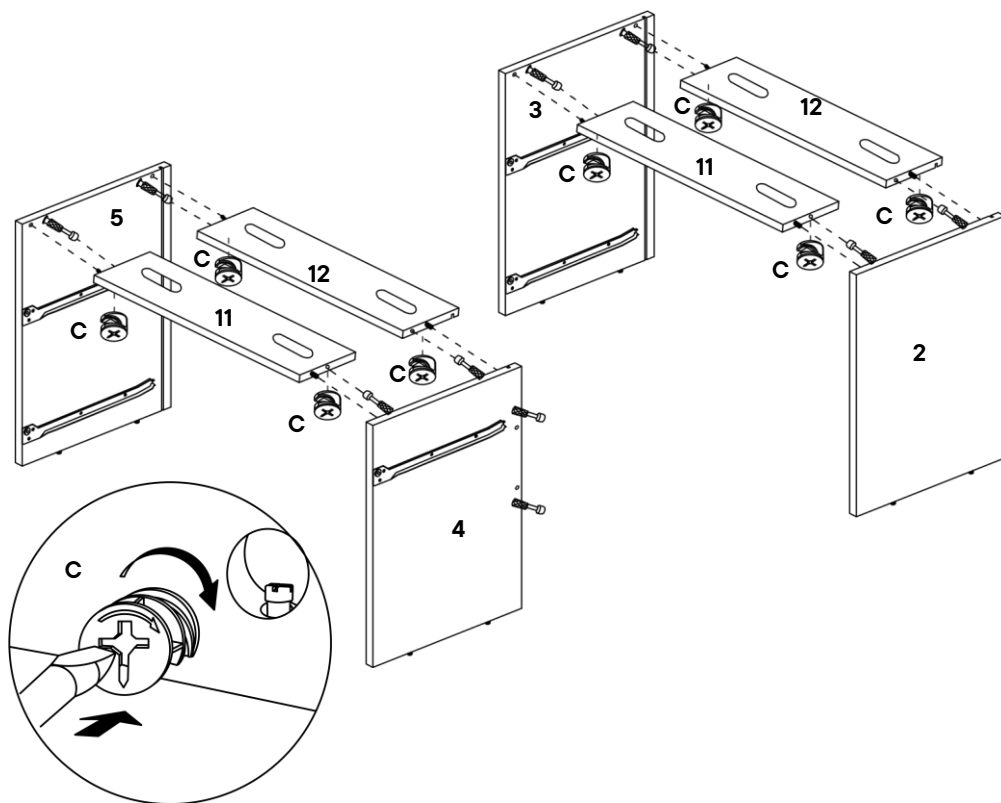
Step 4

HARDWARE

C Titus 9499 Cam Ø15 x 12mm x8

COMPONENTS

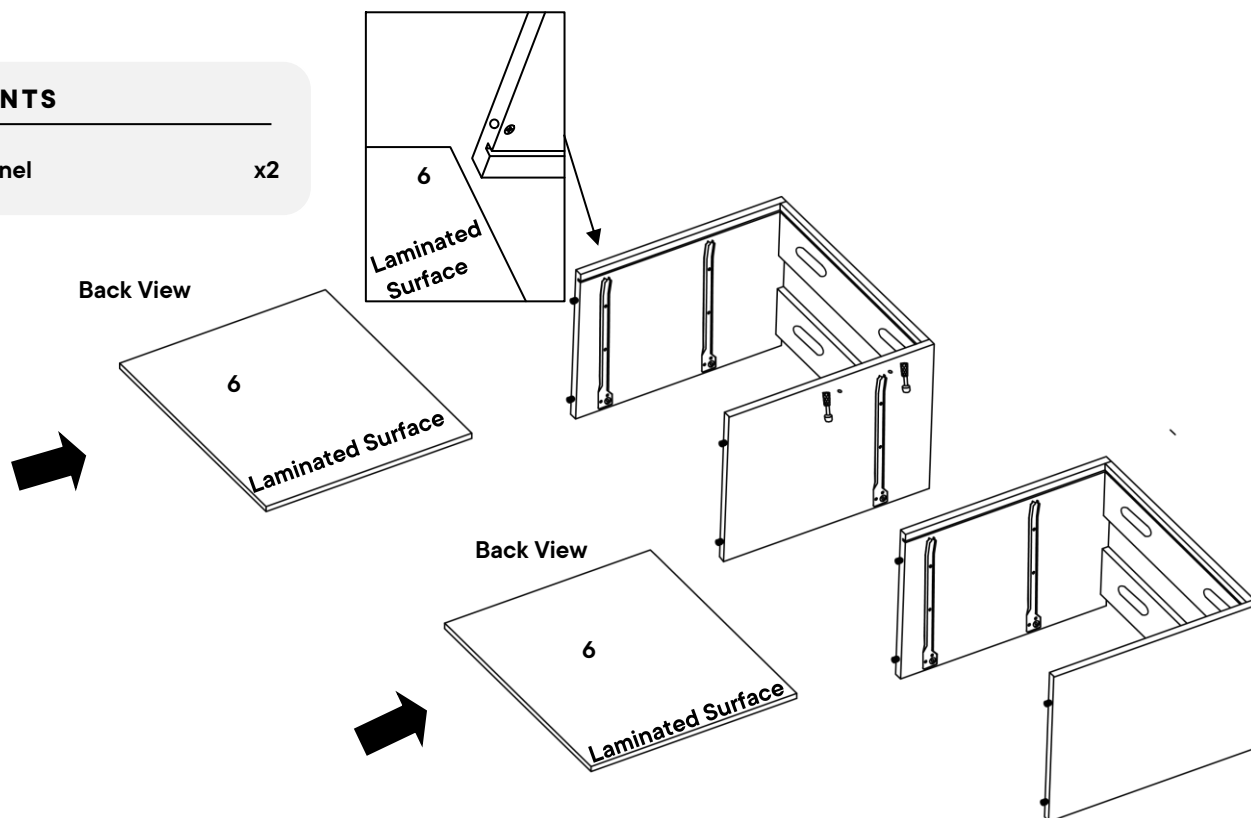
- 2** Right Side Panel x1
- 3** Middle Right Panel x1
- 4** Middle Left Panel x1
- 5** Left Side Panel x1
- 11** Body Support A x2
- 12** Body Support B x2



Step 5

COMPONENTS

6 Back Panel x2



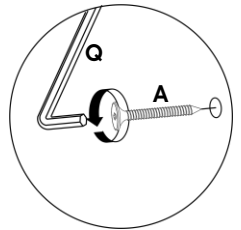
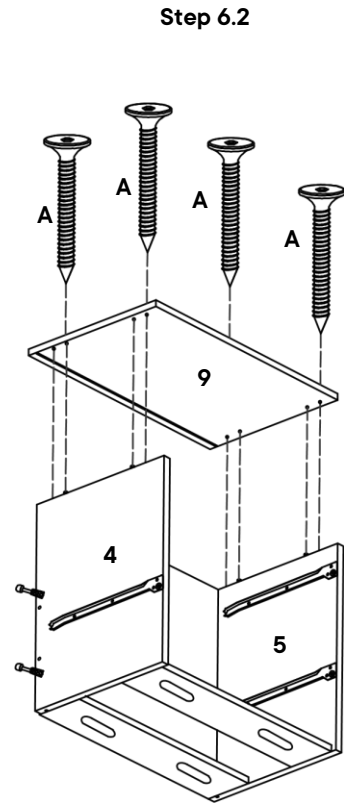
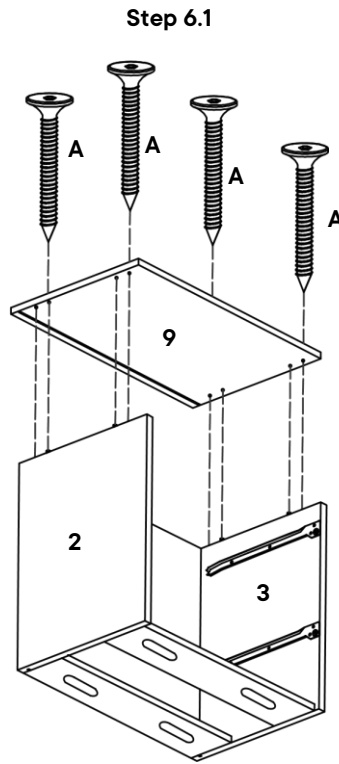
Step 6

HARDWARE

- A** JCBCW M6 x 50mm x8
- Q** Allen Key x1

COMPONENTS

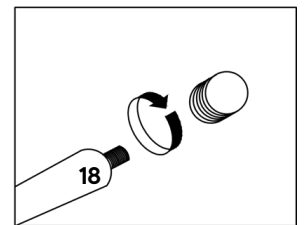
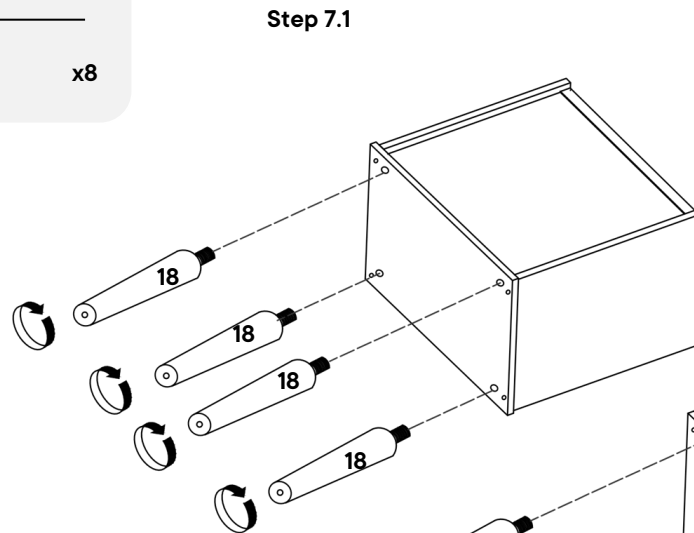
- 2** Right Side Panel x1
- 3** Middle Right Panel x1
- 4** Middle Left Panel x1
- 5** Left Side Panel x1
- 9** Bottom Panel x2



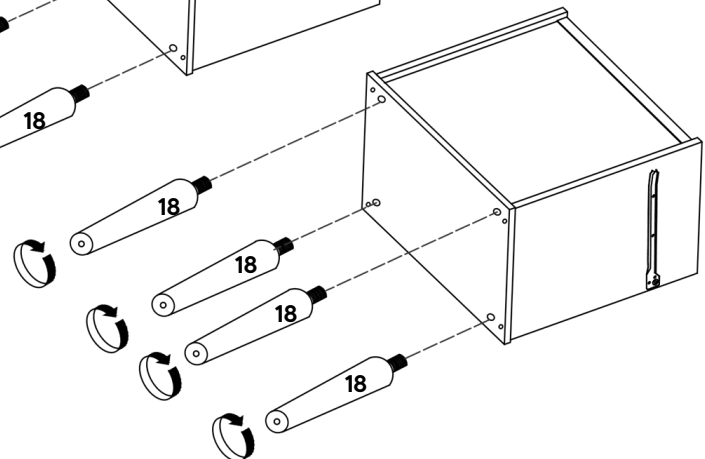
Step 7

COMPONENTS

- 18** Leg x8



Step 7.2



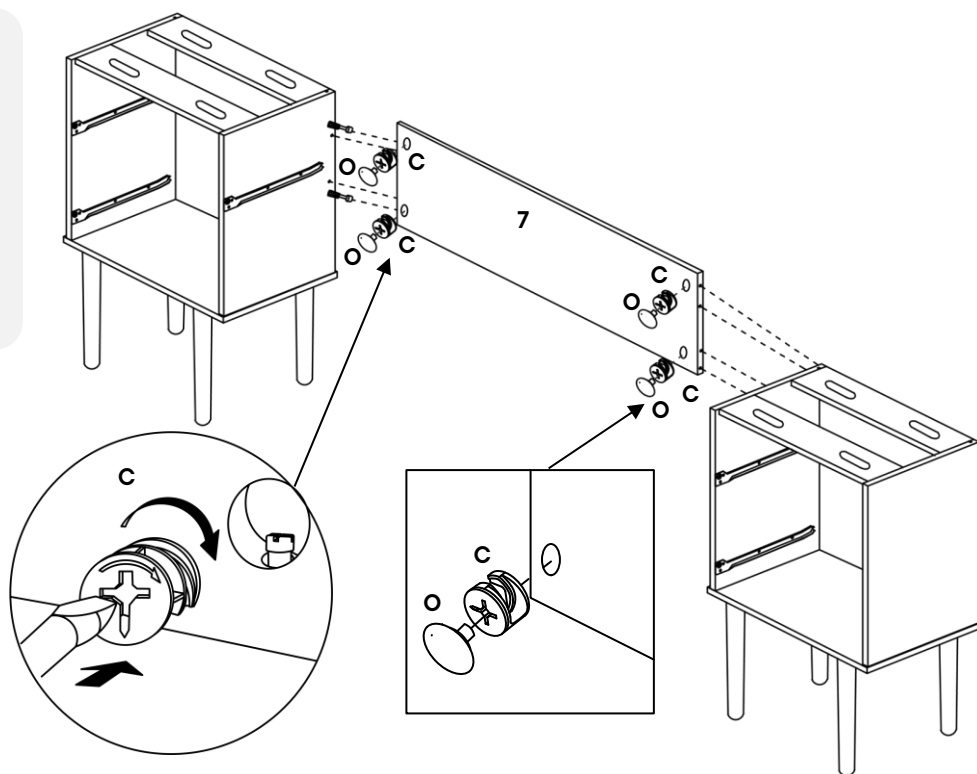
Step 8

HARDWARE

- C** Titus 9499 Cam Ø15 x 12mm x4
- O** Cam Lock Cap (1042) x4

COMPONENTS

- 7** Middle Back Panel x1



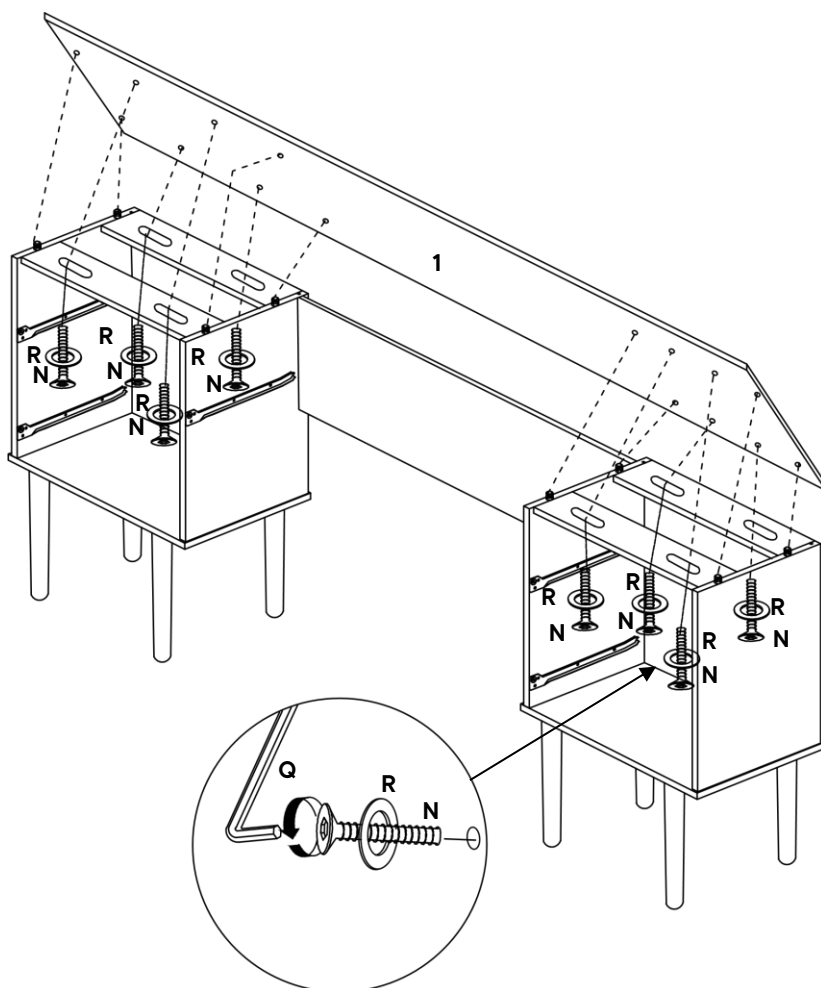
Step 9

HARDWARE

- N** JCBC M6 x 30mm x8
- Q** Allen Key x1
- R** Flat Washer x8

COMPONENTS

- 1** Top Panel x1



Step 10

HARDWARE

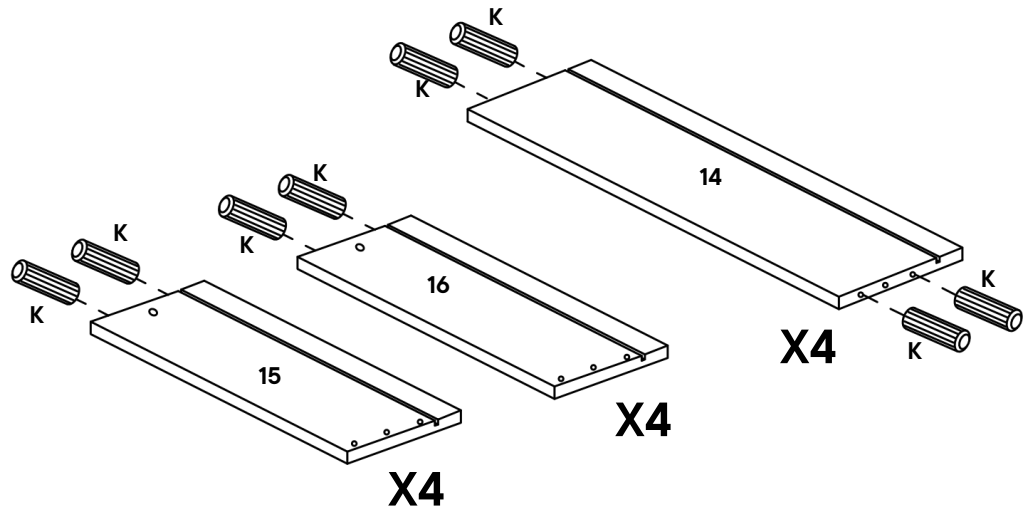
K Wooden Dowel $\varnothing 6 \times 30\text{mm}$ x32

COMPONENTS

14 Drawer Back x4

15 Drawer Right x4

16 Drawer Left x4



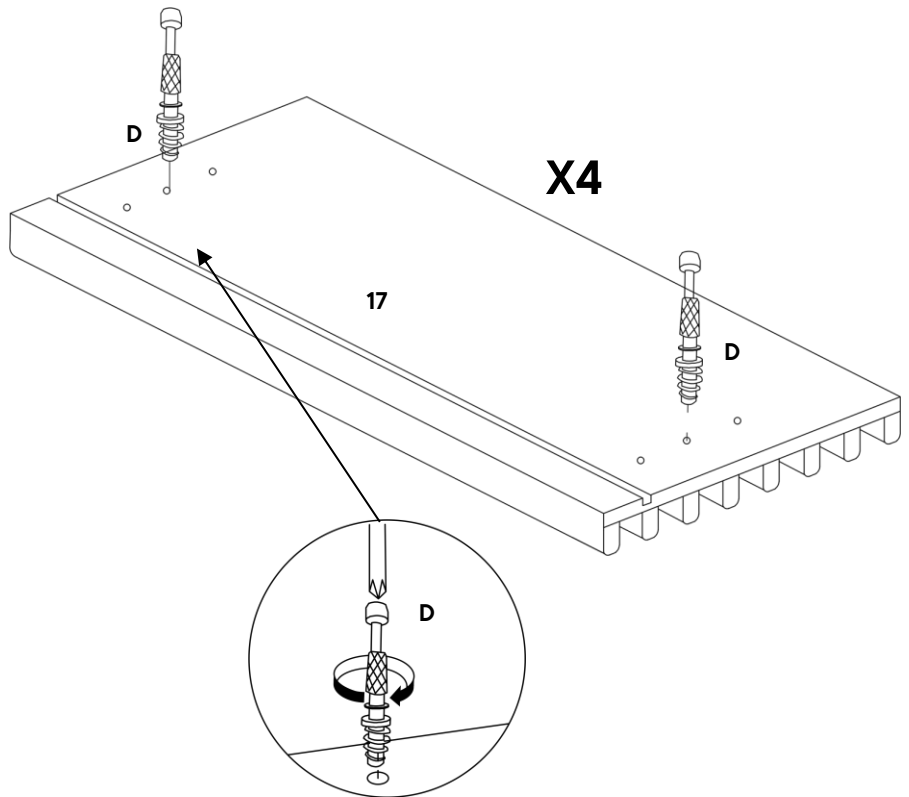
Step 11

HARDWARE

D Cam Bolt- $\varnothing 6 \times 32\text{mm}$ x8

COMPONENTS

17 Drawer Head x4



Step 12

HARDWARE

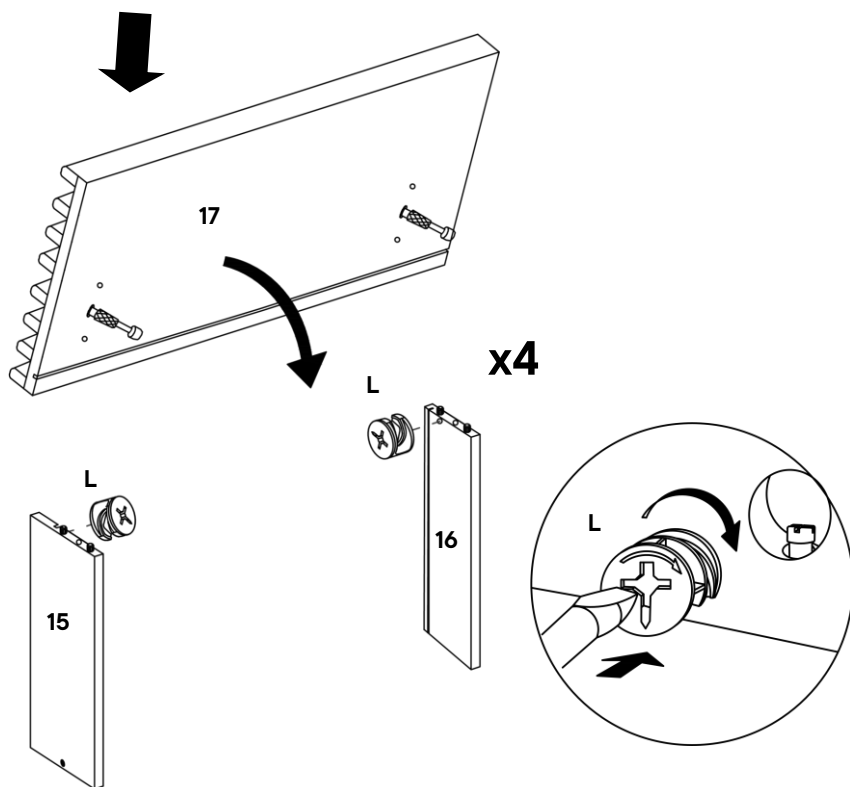
L Titus 5575 Cam Ø15 x 9.9mm x8

COMPONENTS

15 Drawer Right x4

16 Drawer Left x4

17 Drawer Head x4



Step 13

HARDWARE

P C/board Screw Ø4 x 38mm x8

COMPONENTS

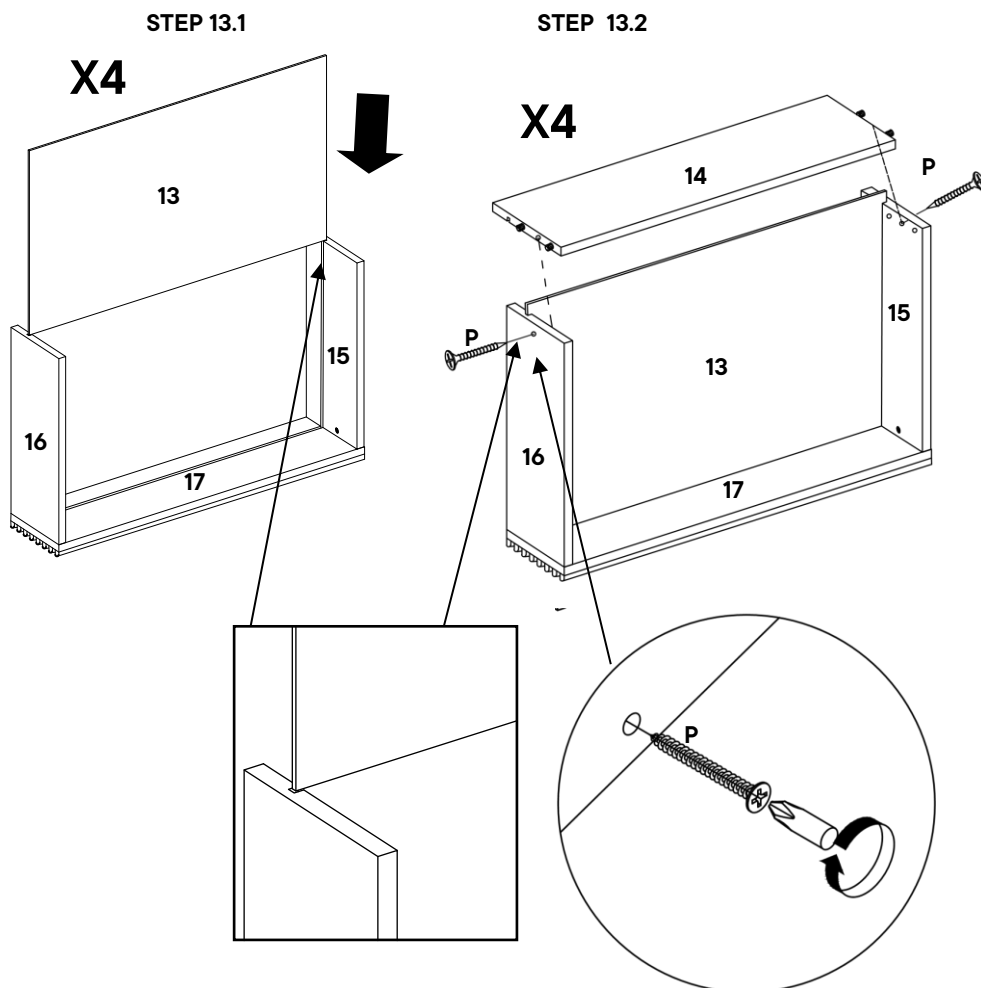
13 Drawer Base x4

14 Drawer Back x4

15 Drawer Right x4

16 Drawer Left x4

17 Drawer Head x4



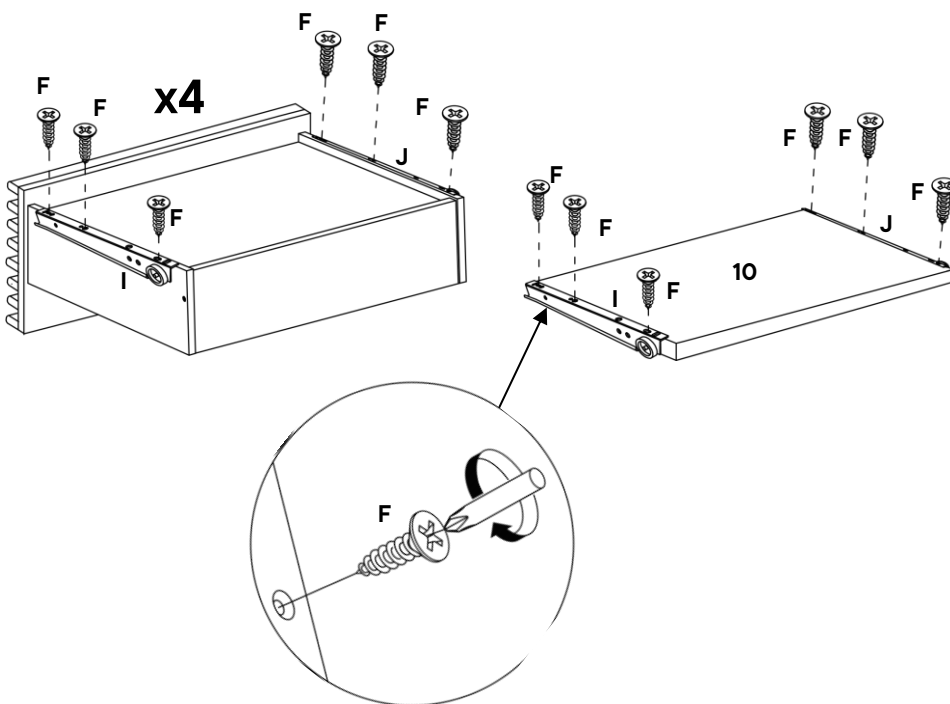
Step 14

HARDWARE

- F** C/board Screw Ø3.5 x 16mm x30
- I** Drawer Runner Left x5
- J** Drawer Runner Right x5

COMPONENTS

- 10** Keyboard Drawer Base x1



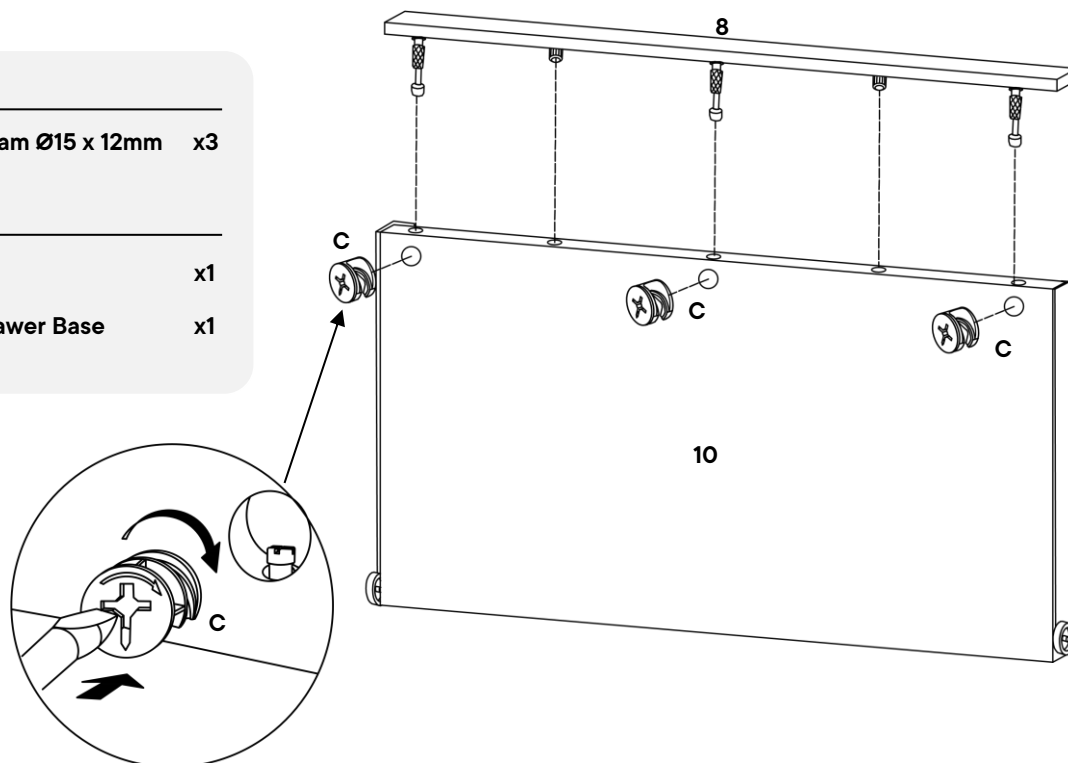
Step 15

HARDWARE

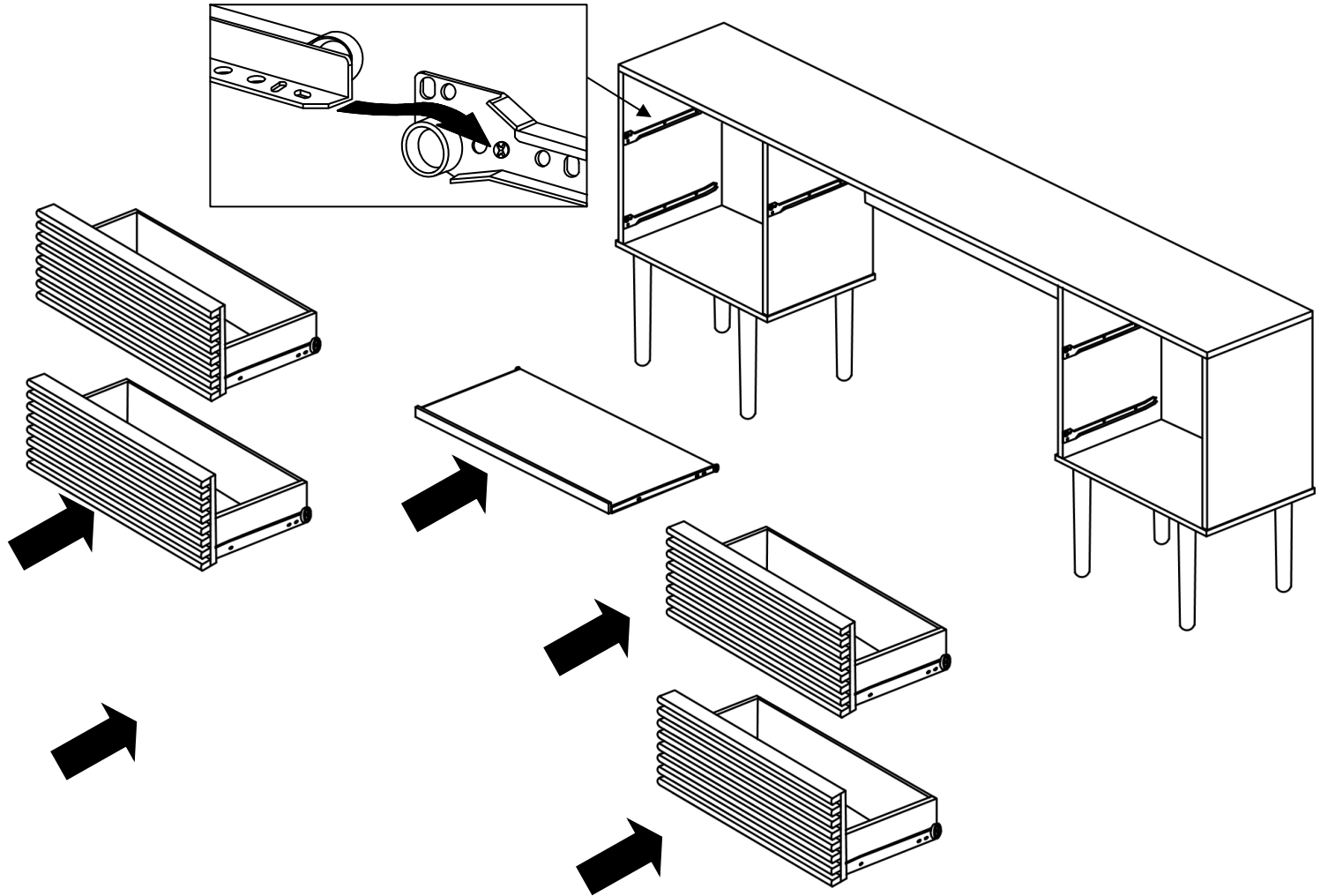
- C** Titus 9499 Cam Ø15 x 12mm x3

COMPONENTS

- 8** Front Skirt x1
- 10** Keyboard Drawer Base x1



Step 16



Great job!

Desk assembly is complete.

♥ CARING FOR YOUR ITEM

Indoor use only.

Not contract grade.

Clean using a non-abrasive cloth and a mild cleaner.

Never use harsh chemicals, as they could damage the finish or integrity of the item.

CONNECT WITH US!

Tag us @modway_furniture and #modway for a chance to be featured.

