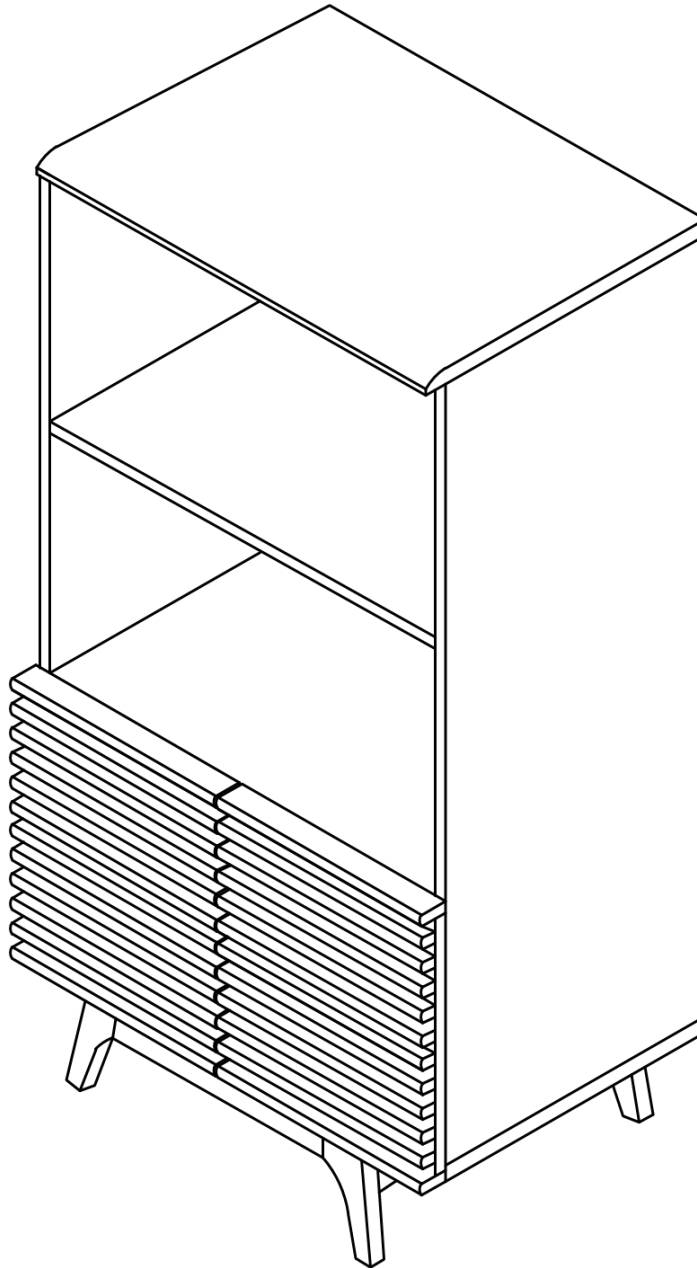


ASSEMBLY INSTRUCTIONS

EEI-6229

V1. 12.29.22



Questions? Contact us!

609.256.9000 • cs@modway.com

www.modway.com

***modway**

Let's get started!

*modway



Read through all of the instructions before starting



Care instructions are listed in the last step of this manual



Approx. 60 minutes assembly time



Make sure you have all parts and components before discarding any packing materials



2 people recommended for assembly

Only use hand tools to assemble this item. Do not use power tools. Do not tighten bolts or screws completely until all hardware is lined up and inserted into the holes.

Do not over-tighten screws and bolts to avoid stripping the hardware or cracking the item.

Assemble your item on a flat, carpeted area, with plenty of space to work. This will prevent damage and scratches to your floors or the item while you're assembling the product.

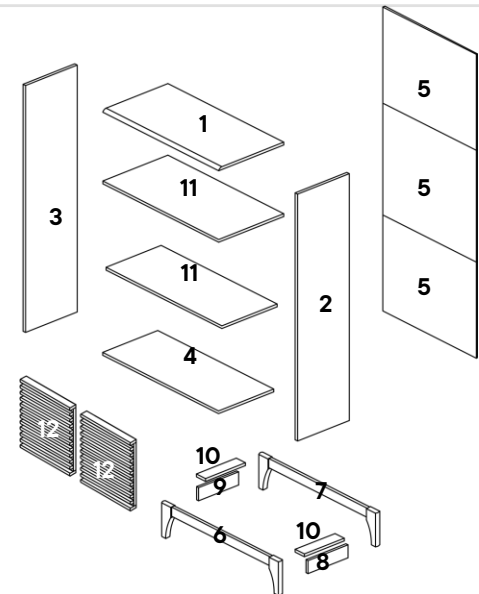
Keep all components and packaging out of reach of children or animals to avoid risk of choking or suffocation.

Furniture components:

1	Top Panel	x1	11	Fixed Shelf	x2
2	Right Side Panel	x1	12	Doors	x2
3	Left Side Panel	x1			
4	Bottom Panel	x1			
5	Back Panel	x3			
6	Front Leg Panel	x1			
7	Back Leg Panel	x1			
8	Right Leg Panel	x1			
9	Left Leg Panel	x1			
10	Leg Support	x2			

Provided hardware:

A		JCBC M6 x 80mm	x2	K		C/board Screw Ø4 x 19mm	x12
B		Wooden Dowel Ø6 x 30mm	x34	L		Anti Tipping Kits	x1
C		Cam Lock Ø15 x 12mm	x16	M		Allen Key	x1
D		Cam Bolt Ø6 x 32mm	x16	N		Soft-Close Hinges 5/8	x4
E		Floor Glide B321	x4	O		Cam Lock Cap (1042)	x4
F		C/board Screw Ø3.5 x 16mm	x28				
G		JCBCW M6 x 50mm	x4				
H		JCBC M6 x 60mm	x4				
I		Plastic Corner Block	x12				
J		C/board Screw Ø4 x 25mm	x2				



What you need:

Phillips Head Screwdriver

Wait!

Missing parts or hardware? Need assistance?

Contact us before returning your item. We're here to help!
609.256.9000 • cs@modway.com

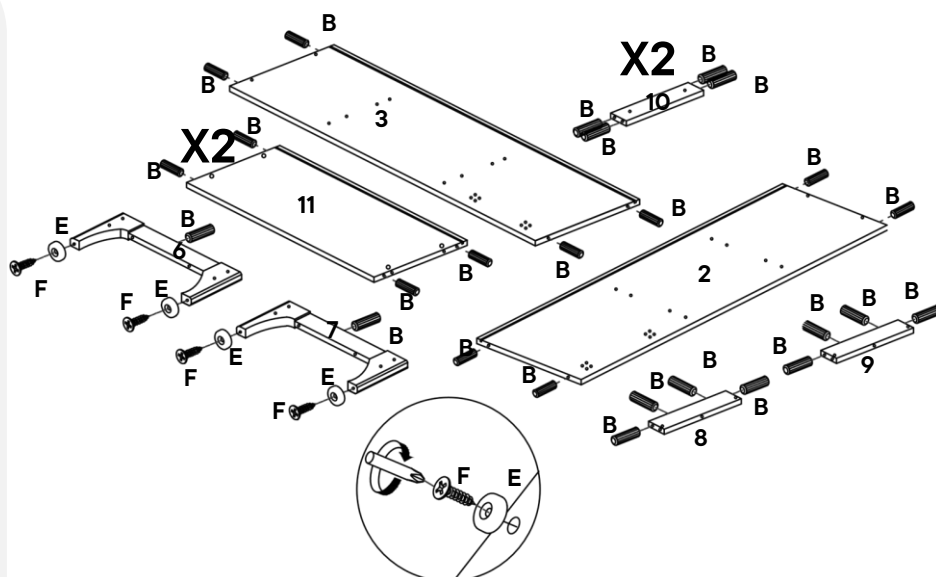
Step 1

HARDWARE

- B** Wooden Dowel Ø6 x 30mm x34
- E** Floor Glide B321 x4
- F** C/board Screw Ø3.5 x 16mm x4

COMPONENTS

- 2** Right Side Panel x1
- 3** Left Side Panel x1
- 6** Front Leg Panel x1
- 7** Back Leg Panel x1
- 8** Right Leg Support x1
- 9** Left Leg Support x1
- 10** Leg Support x2
- 11** Fixed Shelf x2



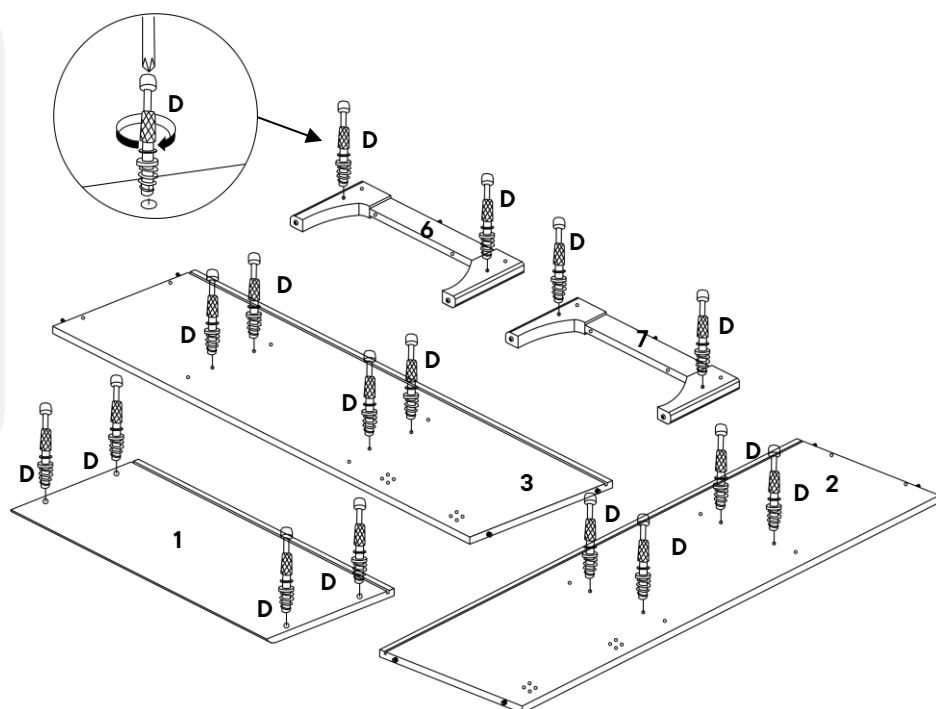
Step 2

HARDWARE

- D** Cam Bolt Ø6 x 32mm x16

COMPONENTS

- 1** Top Panel x1
- 2** Right Side Panel x1
- 3** Left Side Panel x1
- 6** Front Leg Panel x1
- 7** Back Leg Panel x1



Step 3

HARDWARE

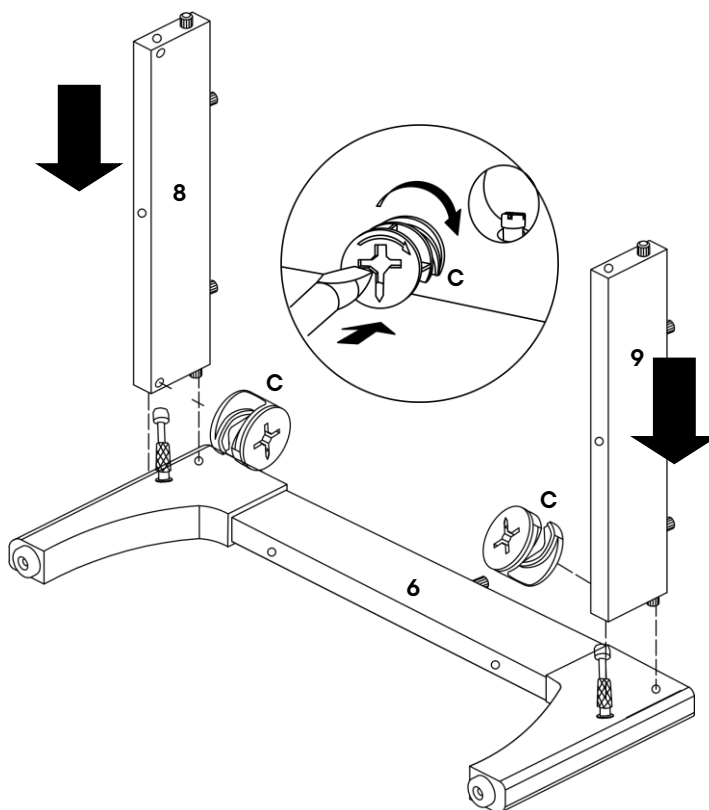
C Cam Lock Ø15 x 12mm x2

COMPONENTS

6 Front Leg Panel x1

8 Right Leg Support x1

9 Left Leg Support x1

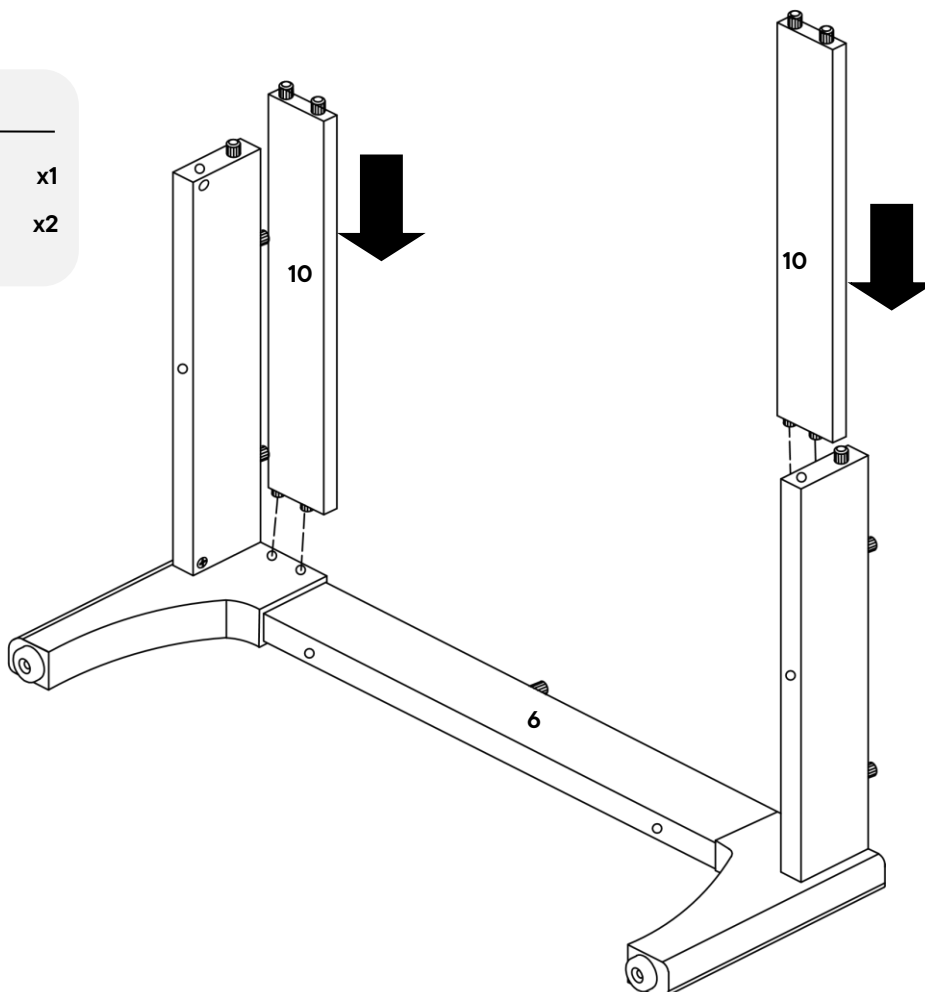


Step 4

COMPONENTS

6 Front Leg Panel x1

10 Leg Support x2



Step 5

HARDWARE

C Cam Lock Ø15 x 12mm x2

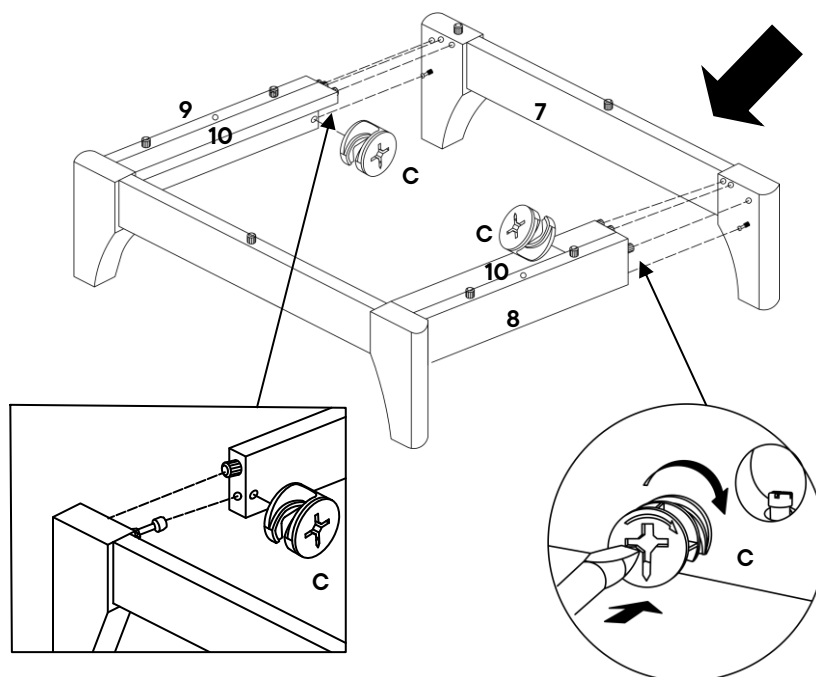
COMPONENTS

7 Back Leg Panel x1

8 Right Leg Support x1

9 Left Leg Support x1

10 Leg Support x2



Step 6

HARDWARE

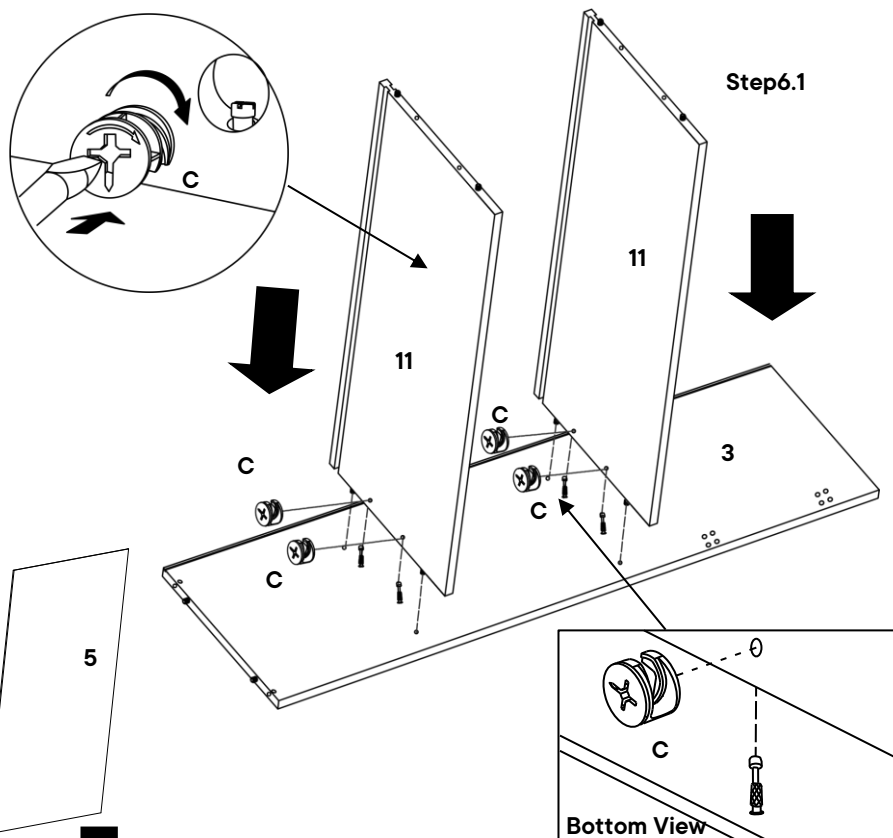
C Cam Lock Ø15 x 12mm x4

COMPONENTS

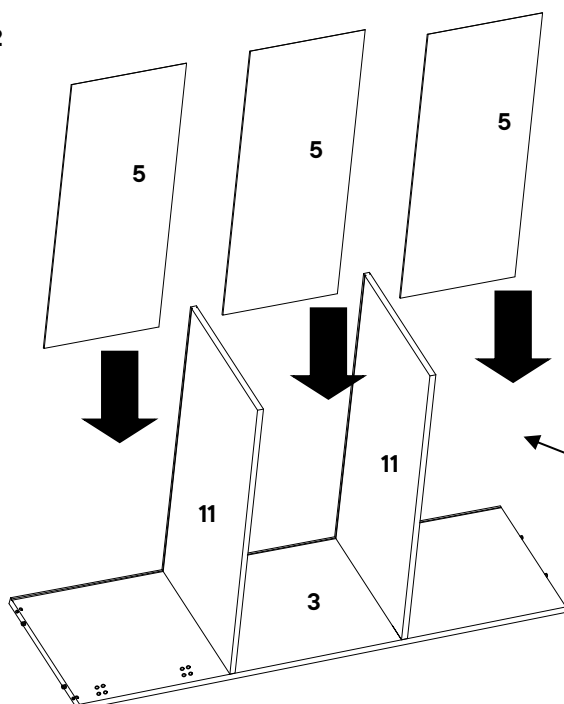
3 Left Side Panel x1

5 Back Panel x3

11 Fixed Shelf x2



Step6.2



Step 7

HARDWARE

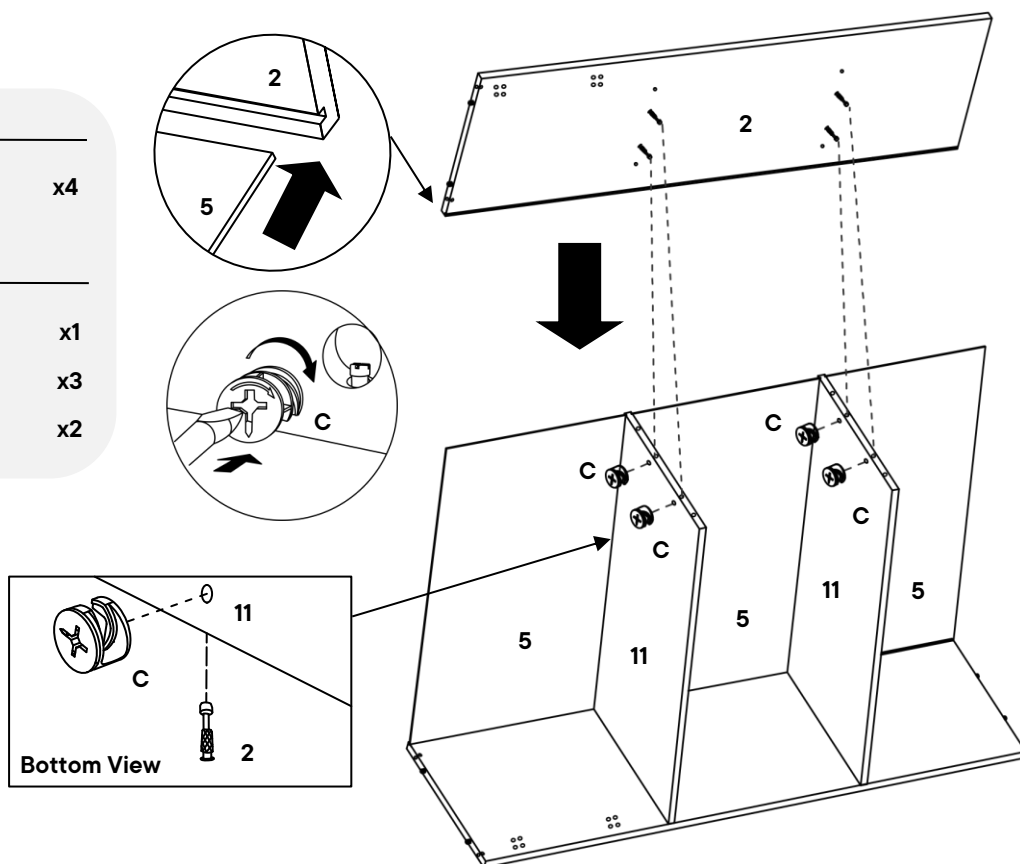
Ⓒ Cam Lock Ø15 x 12mm x4

COMPONENTS

② Right Side Panel x1

⑤ Back Panel x3

⑪ Fixed Shelf x2



Step 8

HARDWARE

Ⓒ Cam Lock Ø15 x 12mm x4

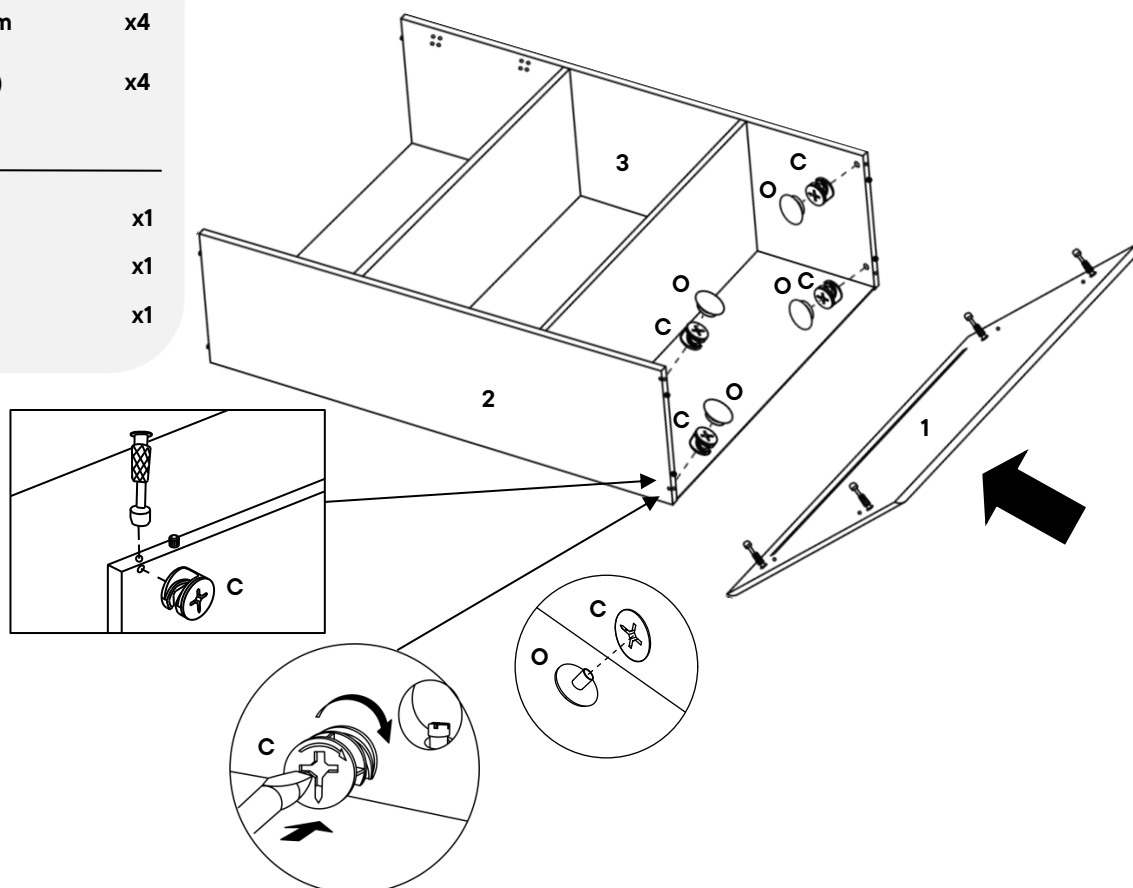
⓪ Cam Lock Cap (1042) x4

COMPONENTS

① Top Panel x1

② Right Side Panel x1

③ Left Side Panel x1



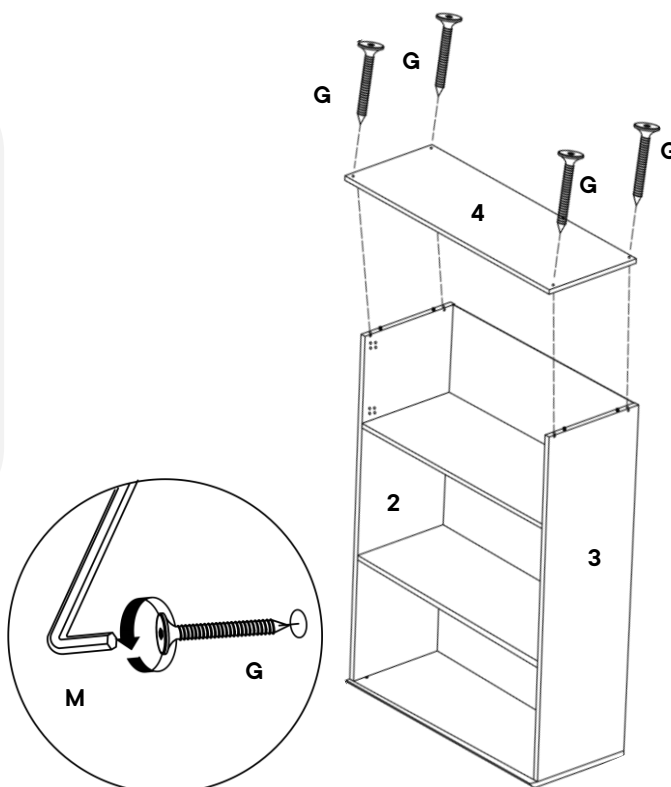
Step 9

HARDWARE

- | | | |
|----------|-----------------|----|
| G | JCBCW M6 x 50mm | x4 |
| M | Allen Key | x1 |

COMPONENTS

- | | | |
|----------|------------------|----|
| 2 | Right Side Panel | x1 |
| 3 | Left Side Panel | x1 |
| 4 | Bottom Panel | x1 |



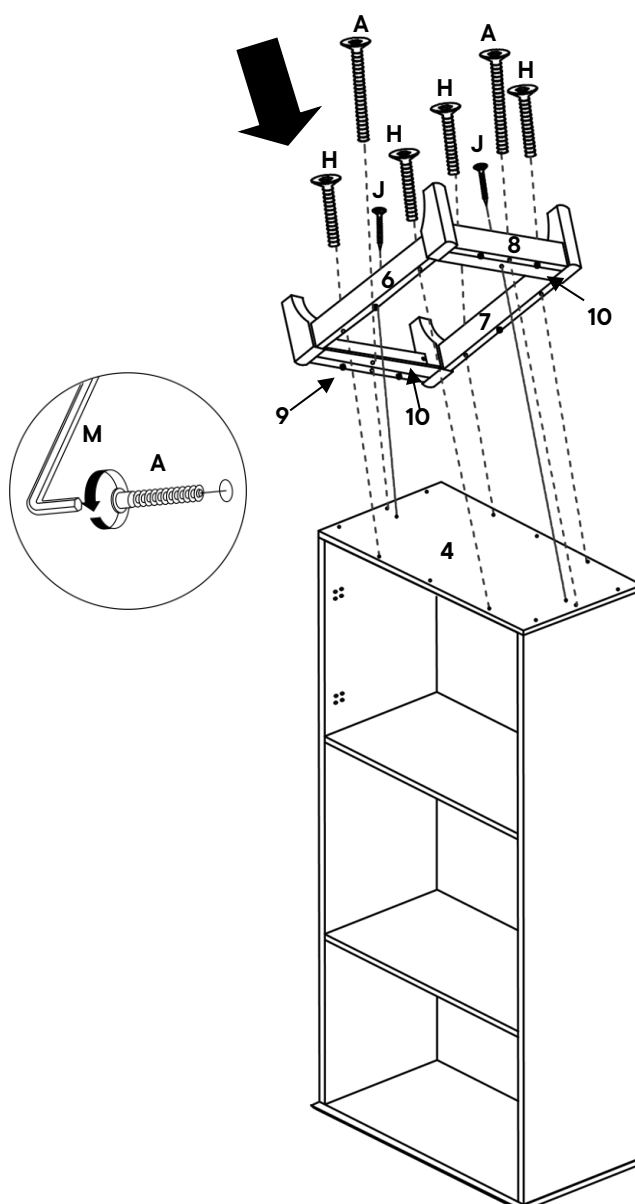
Step 10

HARDWARE

- | | | |
|----------|-------------------------|----|
| A | JCBC M6 x 80mm | x2 |
| H | JCBC M6 x 60mm | x4 |
| J | C/board Screw Ø4 x 25mm | x2 |
| M | Allen Key | x1 |

COMPONENTS

- | | | |
|-----------|-------------------|----|
| 4 | Bottom Panel | x1 |
| 6 | Front Leg Panel | x1 |
| 7 | Back Leg Panel | x1 |
| 8 | Right Leg Support | x1 |
| 9 | Left Leg Support | x1 |
| 10 | Leg Support | x2 |



Step 11

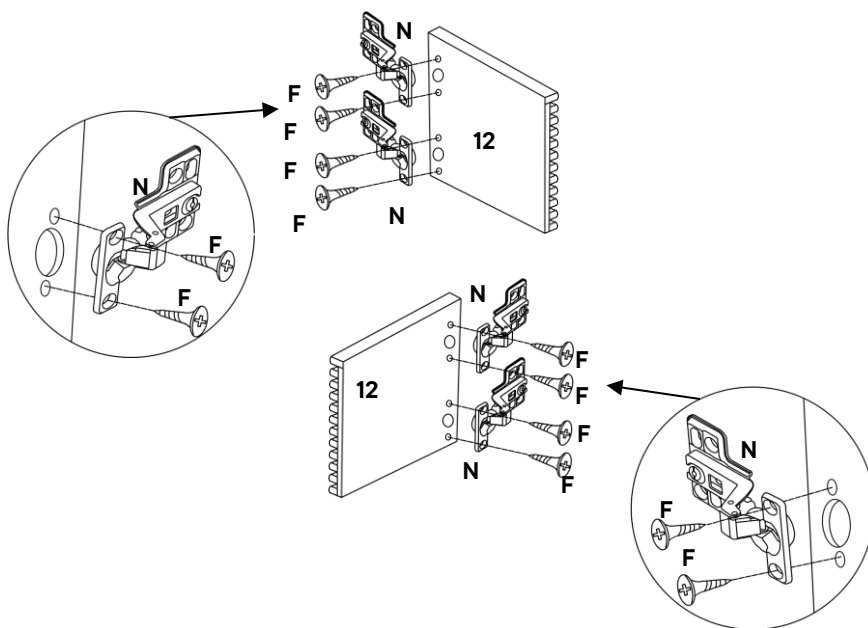
HARDWARE

F C/board Screw Ø3.5 x 16mm x8

N Soft Closing Hinges 5/8 x4

COMPONENTS

12 Doors x2



Step 12

HARDWARE

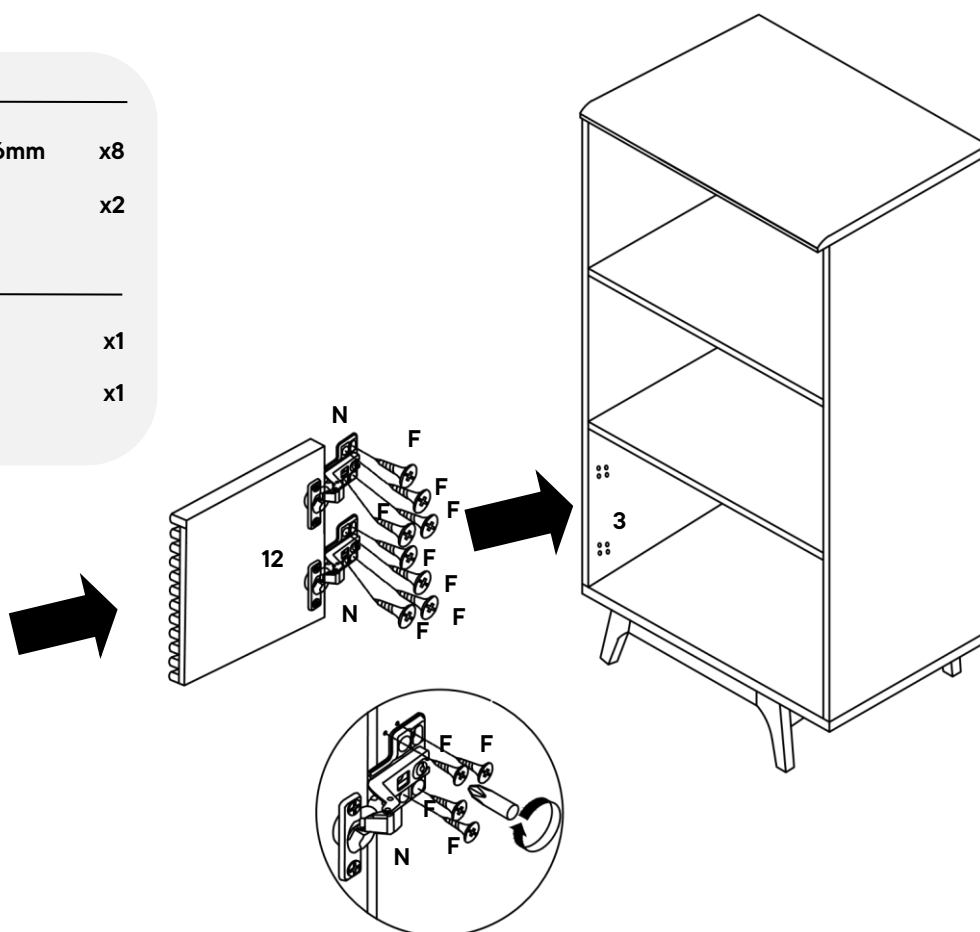
F C/board Screw Ø3.5 x 16mm x8

N Soft-Close Hinges 5/8 x2

COMPONENTS

3 Left Side Panel x1

12 Doors x1



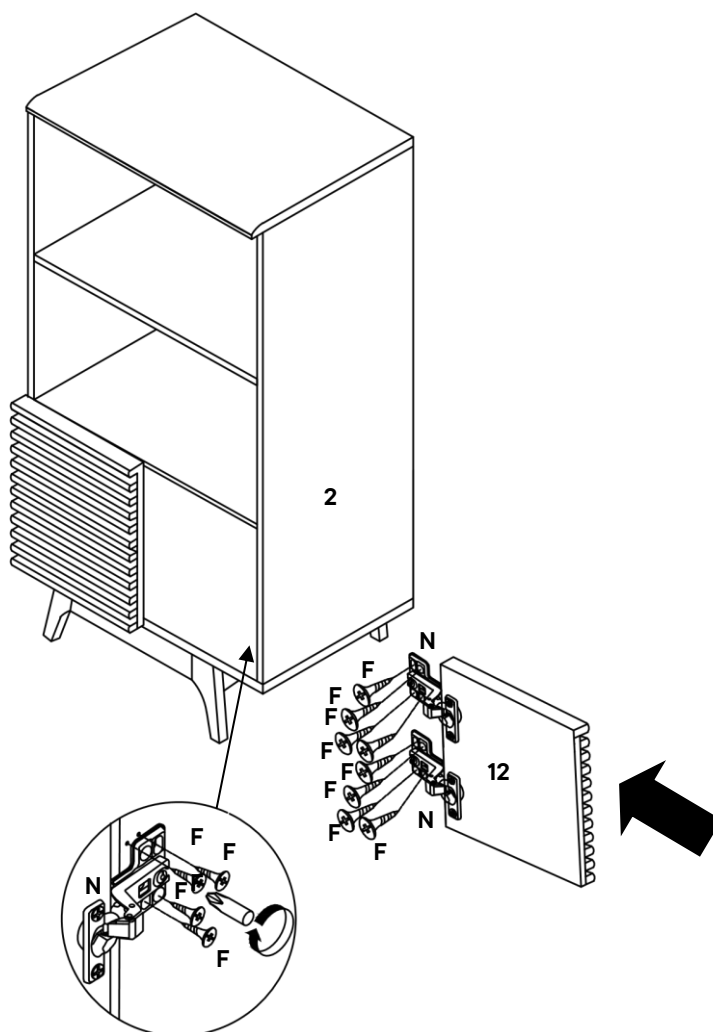
Step 13

HARDWARE

- | | | |
|----------|---------------------------|----|
| F | C/board Screw Ø3.5 x 16mm | x8 |
| N | Soft-Close Hinges 5/8 | x2 |

COMPONENTS

- | | | |
|-----------|------------------|----|
| 2 | Right Side Panel | x1 |
| 12 | Doors | x1 |



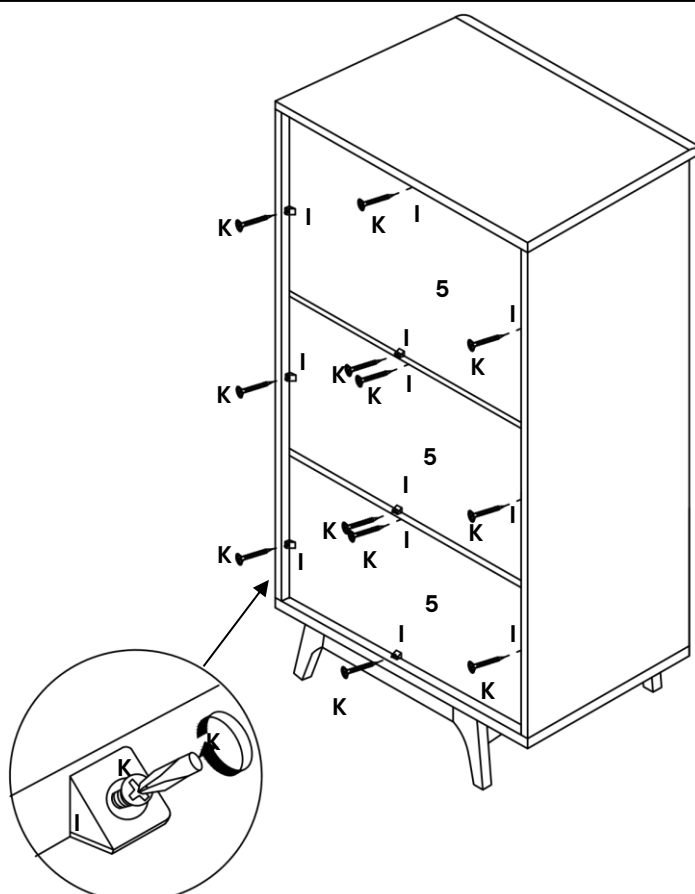
Step 14

HARDWARE

- | | | |
|----------|-------------------------|-----|
| I | Plastic Corner Block | x12 |
| K | C/board Screw Ø4 x 19mm | x12 |

COMPONENTS

- | | | |
|----------|------------|----|
| 5 | Back Panel | x3 |
|----------|------------|----|



Great job

Bookshelf assembly is complete.



CARING FOR YOUR ITEM

Indoor use only.

Not contract grade.

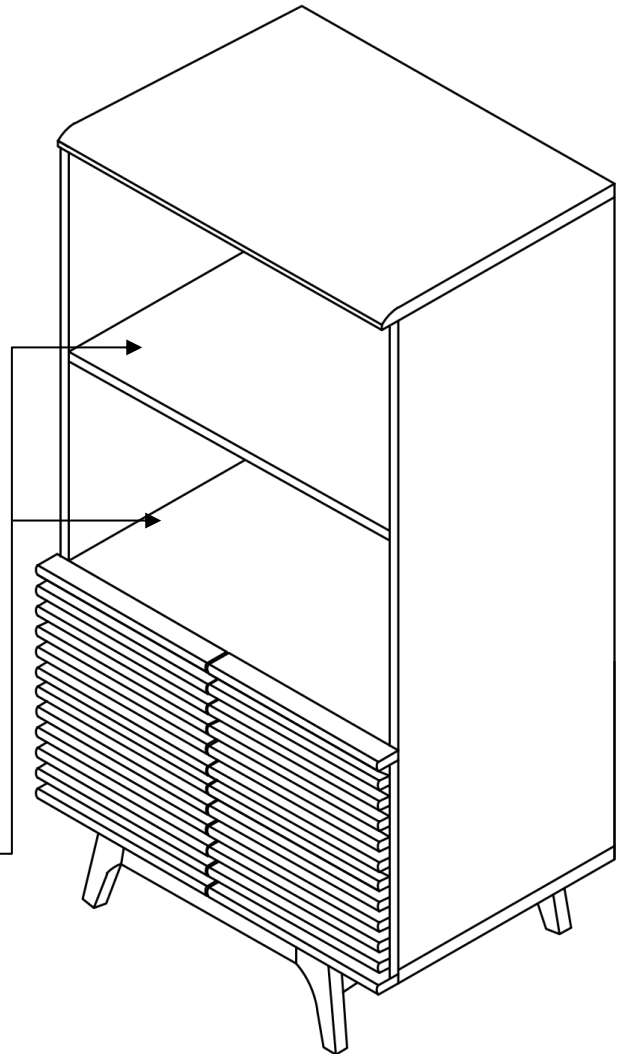
Clean using a non-abrasive cloth
and a mild cleaner

Never use harsh chemicals,
as they could damage the finish or
integrity of the item.

CONNECT WITH US!   

Tag us **@modway_furniture** and
#modway for a chance to be featured.

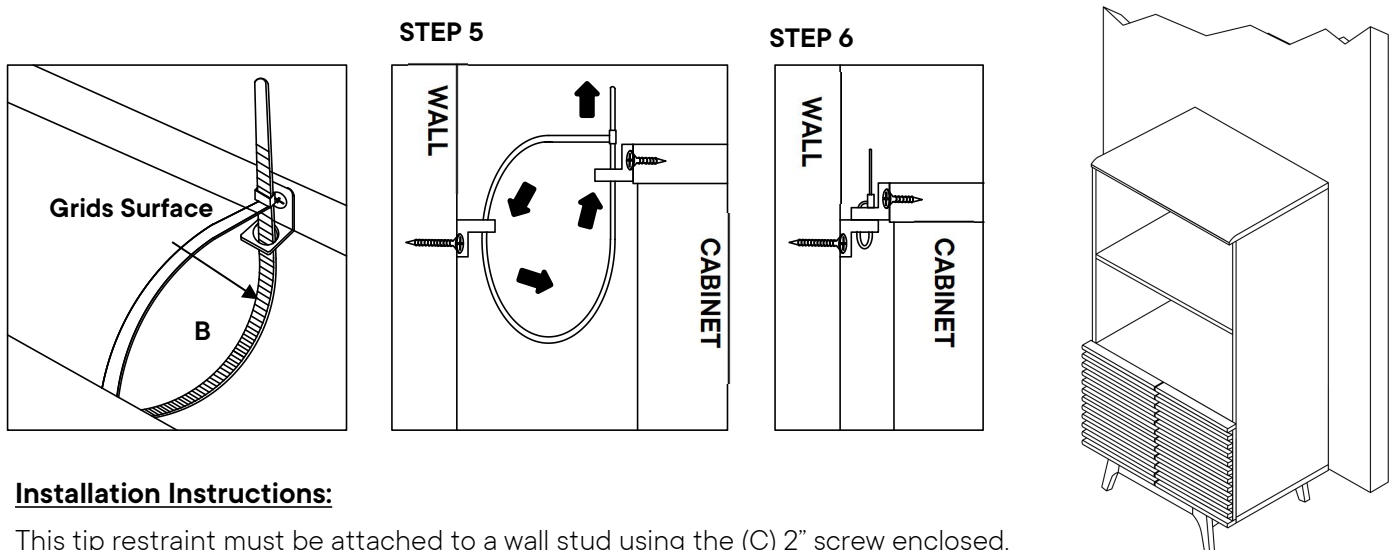
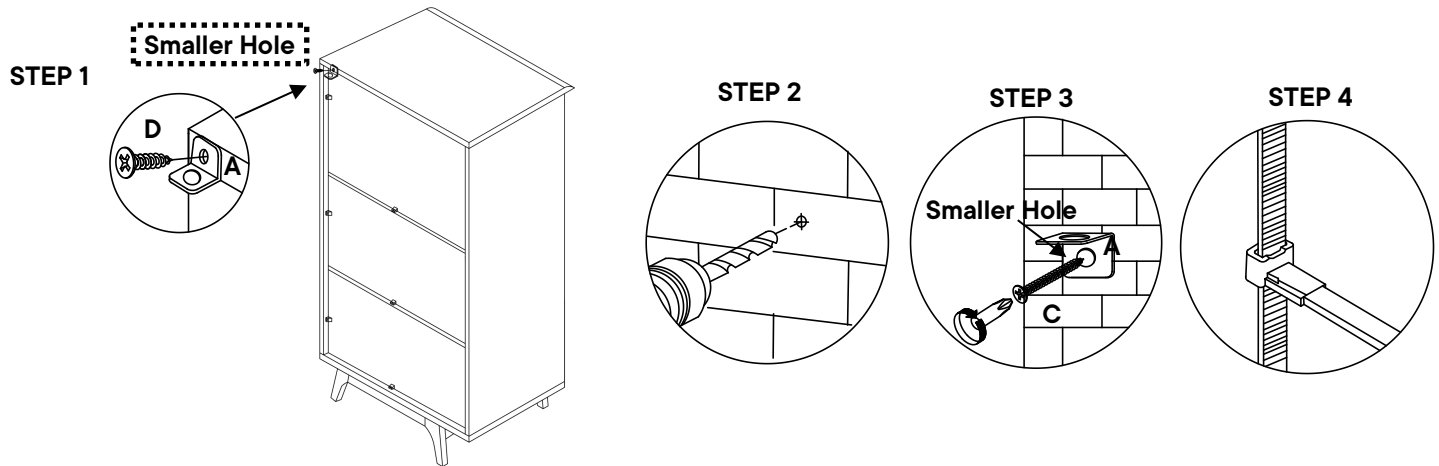
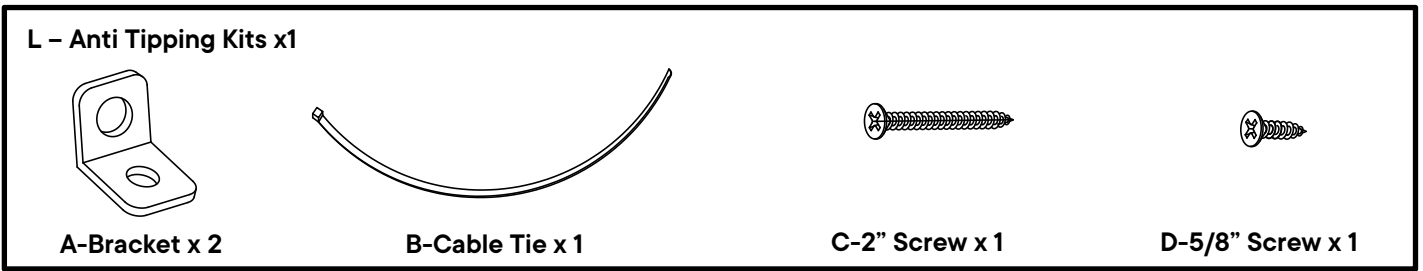
Max: 66 lbs / 30kg



TIPPING RESTRAINTS KIT INSTALLATION GUIDANCE

Different wall materials require unique wall fasteners.

Please consult your local hardware store to ensure you are using the correct hardware for your wall type



Installation Instructions:

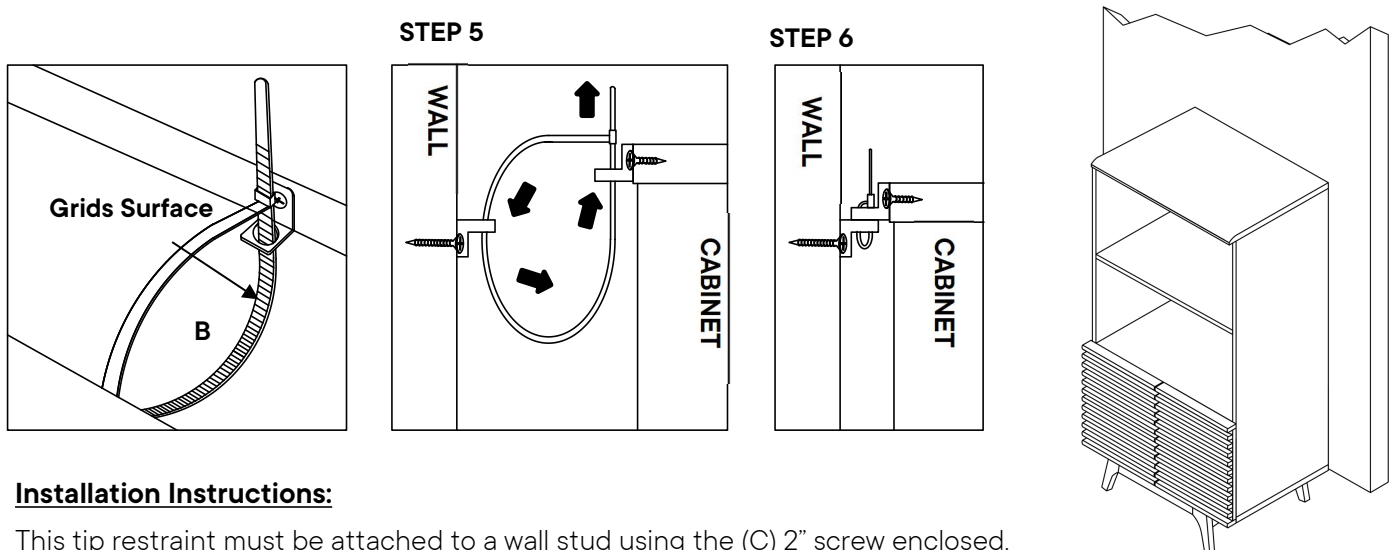
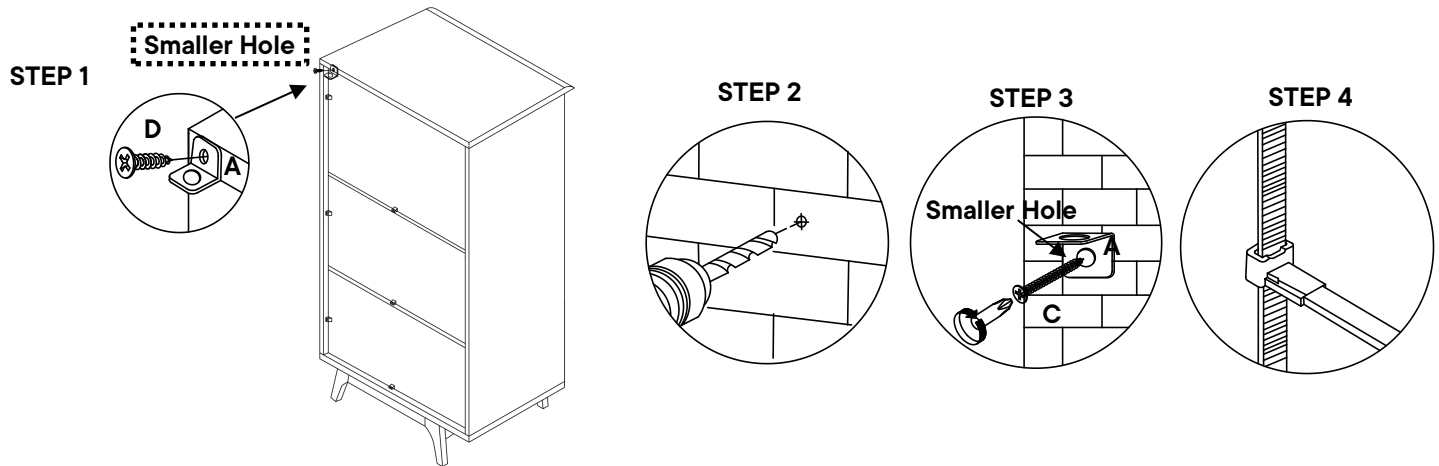
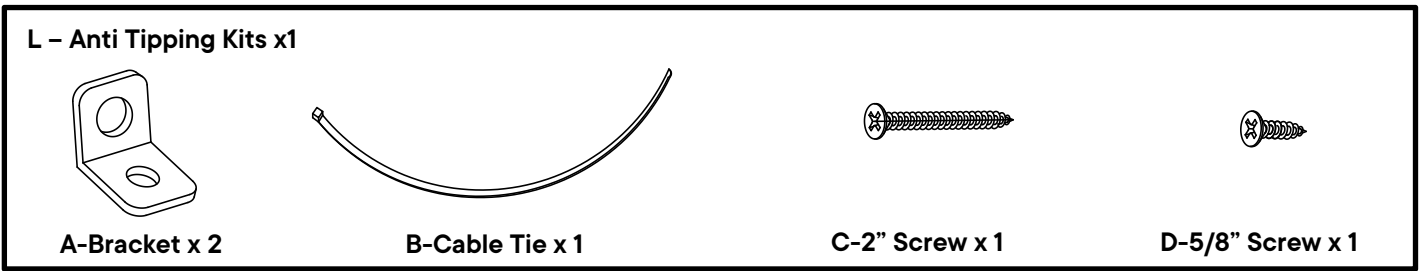
This tip restraint must be attached to a wall stud using the (C) 2" screw enclosed.

1. Attach a bracket (A) securely to the back top rail of the furniture using the 5/8" screw (D) provided, through the smaller hole.
2. Locate the other bracket (A) on the wall over a wall stud and 2 inches below the mounting bracket secured to the back of your unit. Attach to the wall stud using the (C) 2" screw provided, through the smaller hole.
3. Place the furniture into position so both mounting brackets are vertically in line.
4. Lace the end of the restraint strap (B) through the larger hole in each mounting bracket. Bring both ends together and slide the flat end through the locking end and draw it through until all slack is removed.
5. Confirm that the strap (B) is securely laced and locked.

TIPPING RESTRAINTS KIT INSTALLATION GUIDANCE

Different wall materials require unique wall fasteners.

Please consult your local hardware store to ensure you are using the correct hardware for your wall type



Installation Instructions:

This tip restraint must be attached to a wall stud using the (C) 2" screw enclosed.

1. Attach a bracket (A) securely to the back top rail of the furniture using the 5/8" screw (D) provided, through the smaller hole.
2. Locate the other bracket (A) on the wall over a wall stud and 2 inches below the mounting bracket secured to the back of your unit. Attach to the wall stud using the (C) 2" screw provided, through the smaller hole.
3. Place the furniture into position so both mounting brackets are vertically in line.
4. Lace the end of the restraint strap (B) through the larger hole in each mounting bracket. Bring both ends together and slide the flat end through the locking end and draw it through until all slack is removed.
5. Confirm that the strap (B) is securely laced and locked.