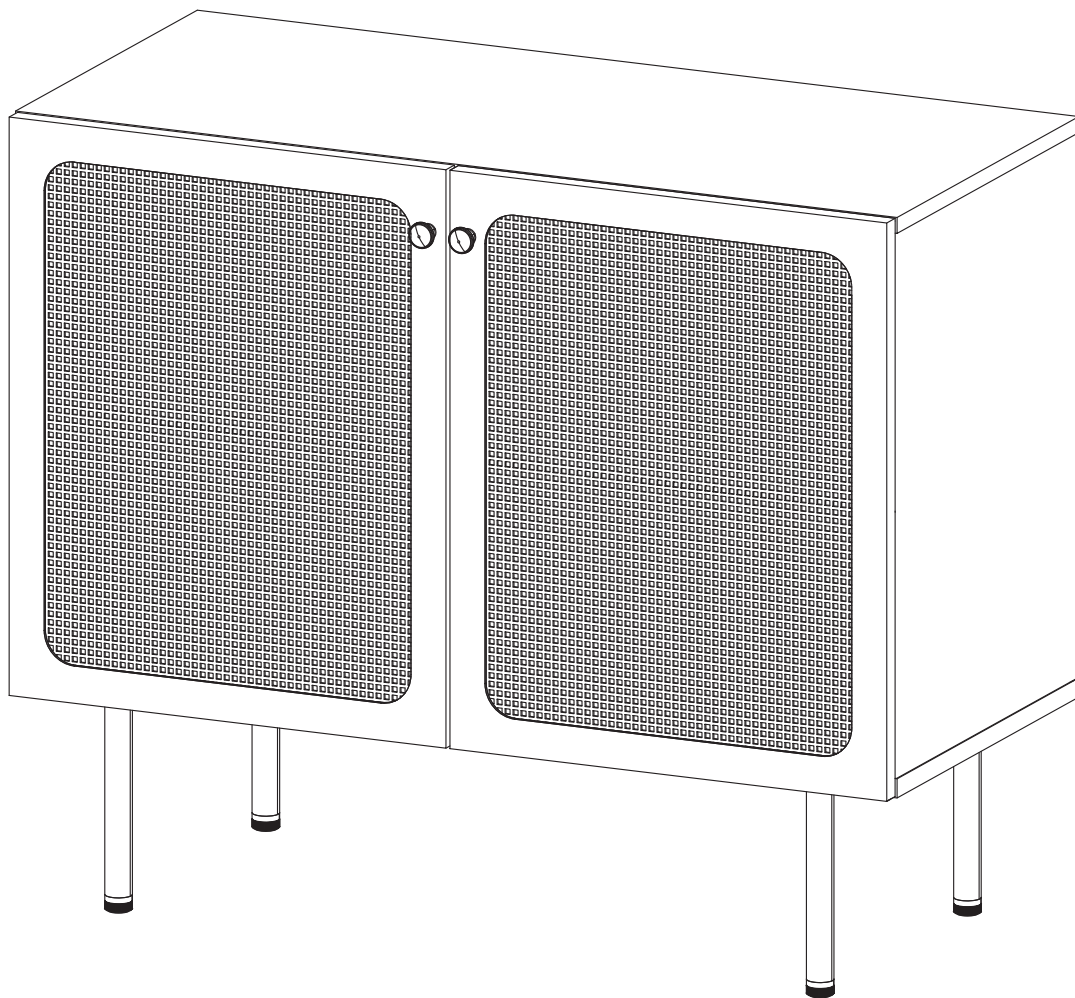


ASSEMBLY INSTRUCTIONS

EEI-6200

V0.09.09.22



Questions? Contact us!

609.256.9000 • cs@modway.com
www.modway.com

***modway**

Let's get started!

*modway



Read through all of the instructions before starting



Care instructions are listed in the last step of this manual



Approx. 60 minutes assembly time



Make sure you have all parts and components before discarding any packing materials



2 people recommended for assembly

Only use hand tools to assemble this item. Do not use power tools. Do not tighten bolts or screws completely until all hardware is lined up and inserted into the holes.

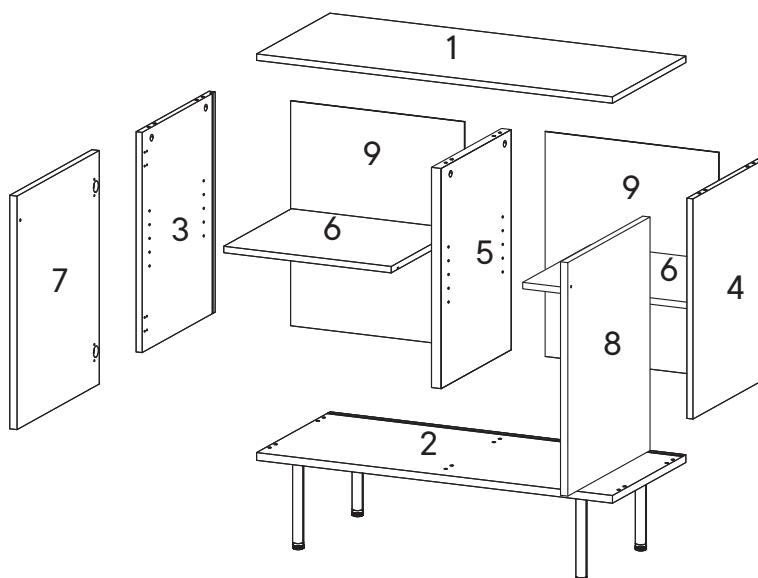
Do not over-tighten screws and bolts to avoid stripping the hardware or cracking the item.

Assemble your item on a flat, carpeted area, with plenty of space to work. This will prevent damage and scratches to your floors or the item while you're assembling the product.

Keep all components and packaging out of reach of children or animals to avoid risk of choking or suffocation.

Furniture components:

1	Top Board	x1
2	Bottom Board	x1
3	Side Board Left	x1
4	Side Board Right	x1
5	Center Board	x1
6	Adjustable Shelf	x2
7	Door Left	x1
8	Door Right	x1
9	Back Board	x2



Provided hardware:

A		Cam Bolt Ø6 x 35 mm	x6
B		Cam Lock Ø15 mm	x6
C		Silicon Bumper	x2
D		Wood Dowel Ø8 x 30 mm	x12
E		Screw M 3 x 17 mm	x2
F		Screw M 7 x 50 mm	x6
G		Screw Cap Ø15 mm Short	x4
H		Back Panel Holder	x2
I		Allen Key	x2

J		Handle	x2
K		Screw M 4.5 x 12.5 mm	x40
L		Screw M 4 x 22 mm	x2
M		Shelf Pin	x8
N		Wedge	x10
O		Screw M 3.5 x 15.5 mm	x10
P		Screw Cap Ø15 mm Long	x2
HS26A		Hinge	x4
LM20A1		Leg Metal	x4

What you need:



Phillips Head Screwdriver

Wait!

Missing parts or hardware? Need assistance?
Contact us before returning your item. We're here to help!
609.256.9000 • cs@modway.com

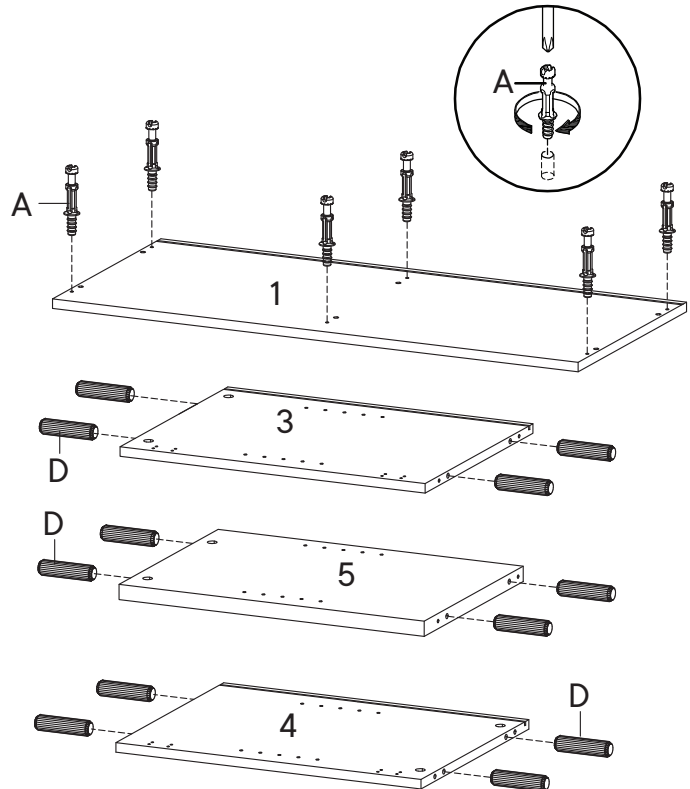
Step 1

HARDWARE

- A** Cam Bolt Ø6 x 35 mm x6
- D** Wood Dowel Ø8 x 30 mm x12

COMPONENTS

- 1** Top Board x1
- 3** Side Board Left x1
- 4** Side Board Right x1
- 5** Center Board x1



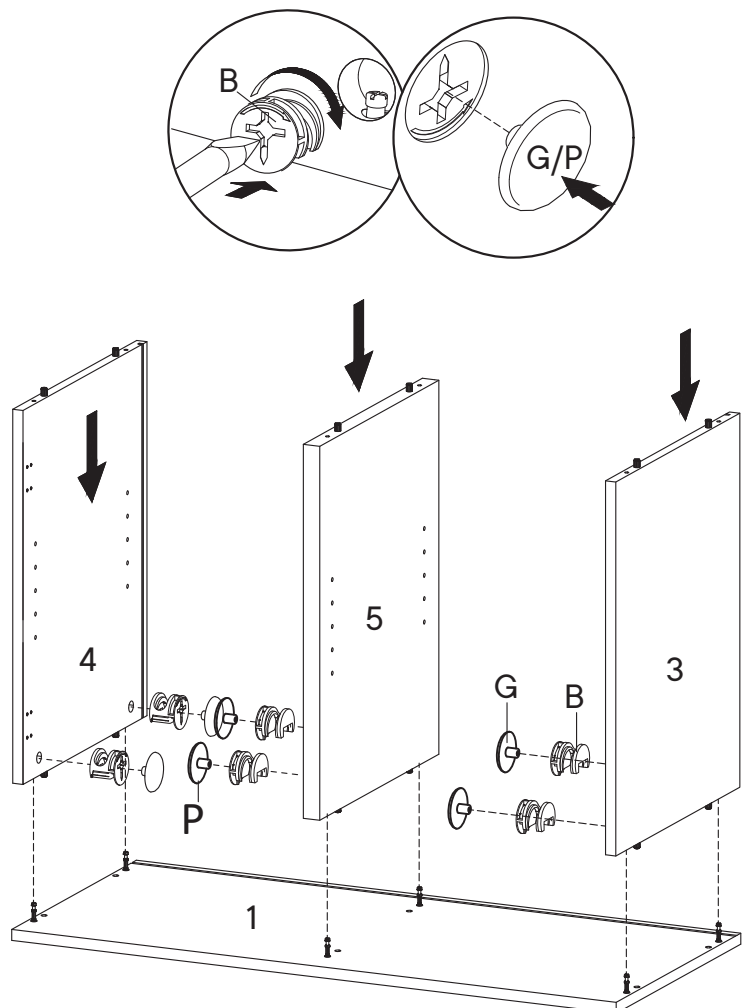
Step 2

HARDWARE

- B** Cam Lock Ø15 mm x3
- G** Screw Cap Ø15 mm Short x4
- P** Screw Cap Ø15 mm Long x2

COMPONENTS

- 1** Top Board x1
- 3** Side Board Left x1
- 4** Side Board Right x1
- 5** Center Board x1



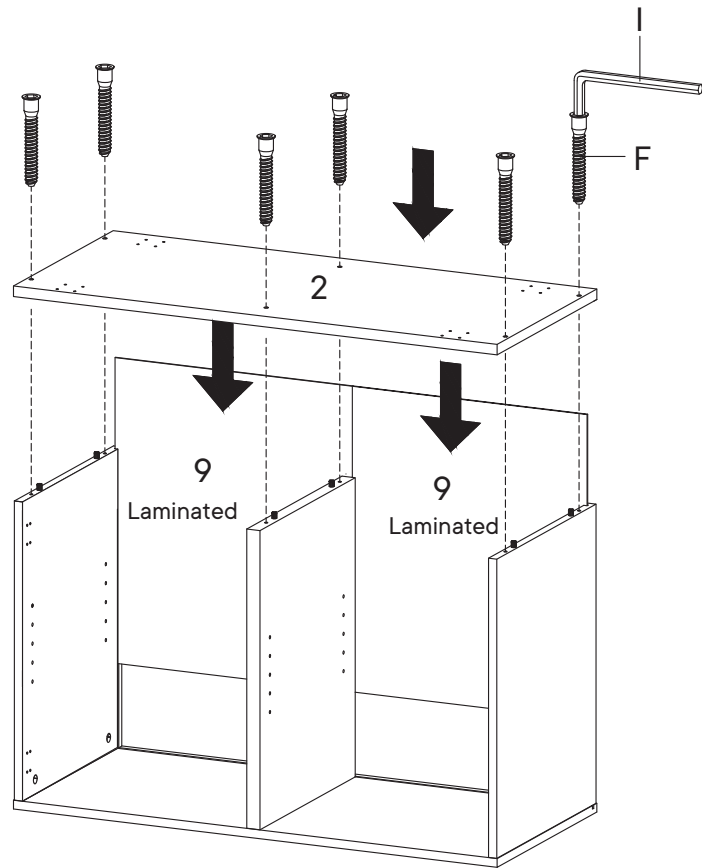
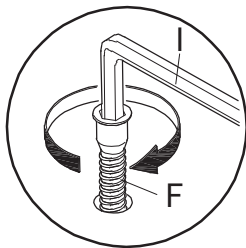
Step 3

HARDWARE

- F** Screw M 7 x 50 mm x6
- I** Allen Key x1

COMPONENTS

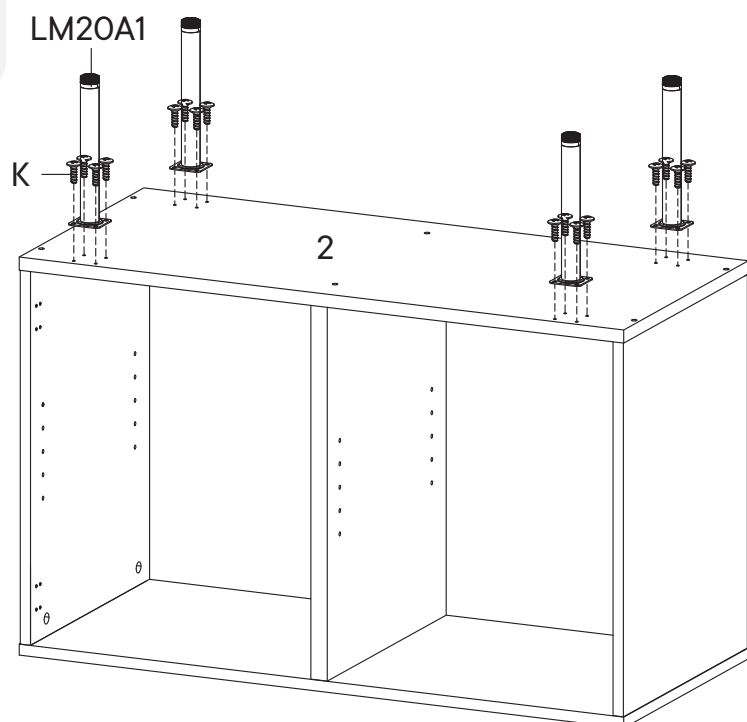
- 2** Bottom Board x1
- 9** Back Board x2



Step 4

HARDWARE

- K** Screw M 4.5 x 12.5 mm x16
- LM20A1** Leg Metal x4



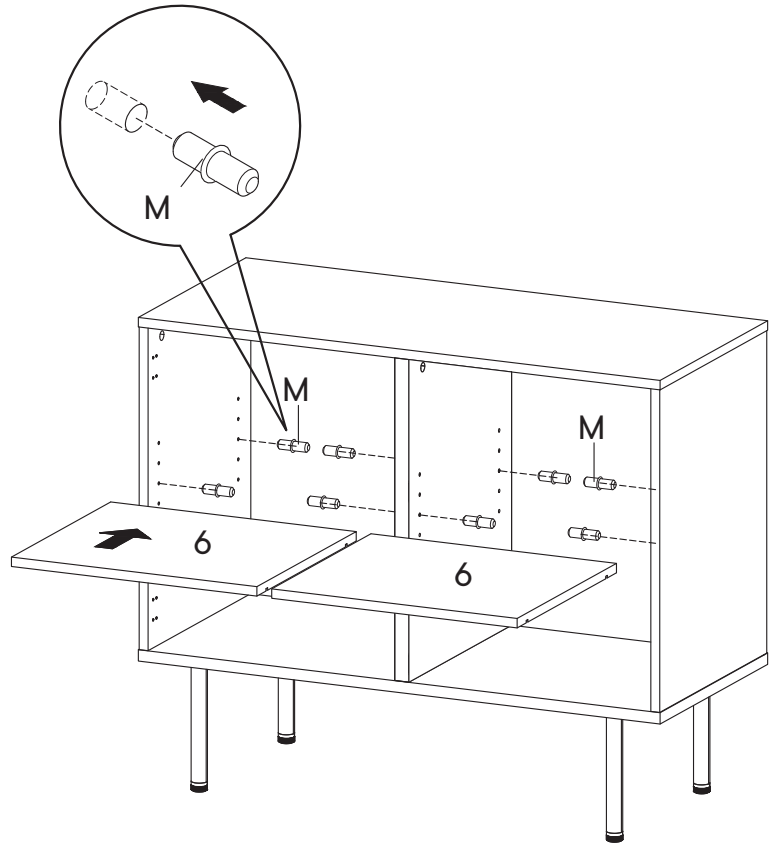
Step 5

HARDWARE

M Shelf Pin x8

COMPONENTS

6 Adjustable Shelf x2



Step 6

HARDWARE

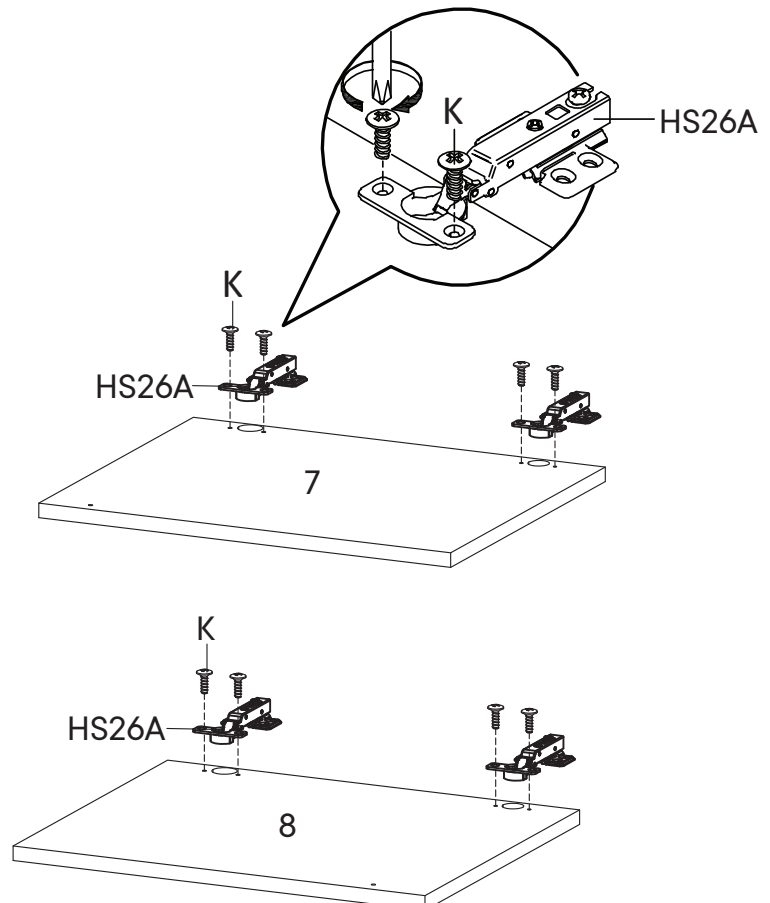
K Screw M 4.5 x 12.5 mm x8

HS26A Hinge x4

COMPONENTS

7 Door Left x1

8 Door Right x1



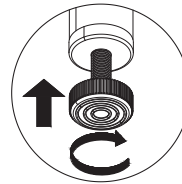
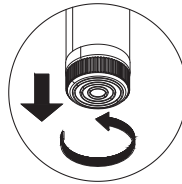
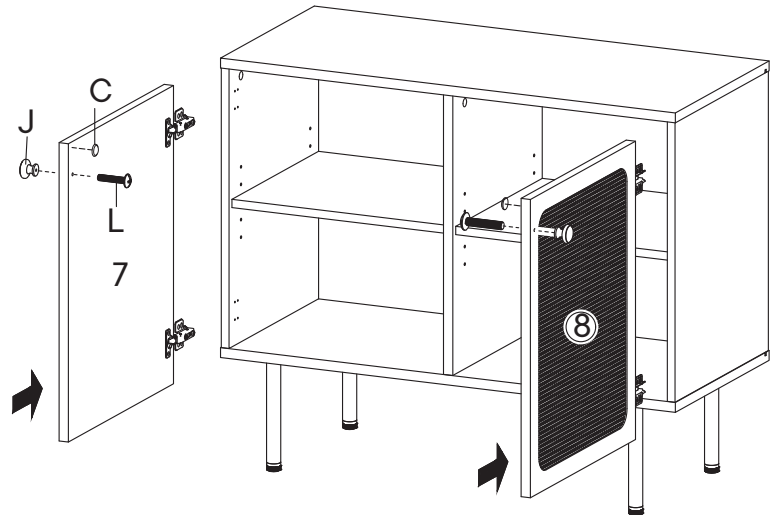
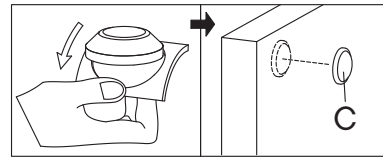
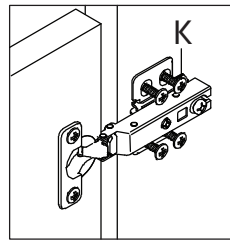
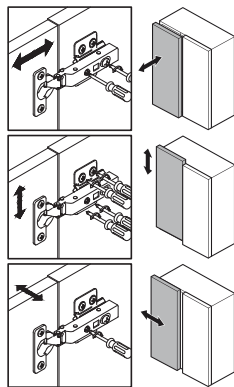
Step 7

HARDWARE

C	Silicon Bumper	x2
J	Handle	x2
K	Screw M 4.5 x 12.5 mm	x16
L	Screw M 4 x 22 mm	x2

COMPONENTS

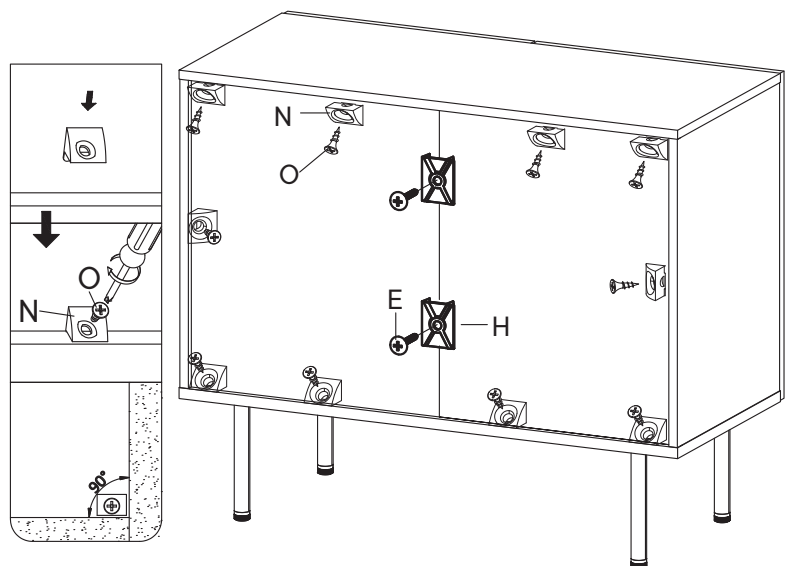
7	Door Left	x1
8	Door Right	x1



Step 8

HARDWARE

E	Screw M 3 x 17 mm	x2
H	Back Panel Holder	x2
N	Wedge	x10
O	Screw M 3.5 x 15.5 mm	x10



Great job!

Cabinet assembly is complete.

♥ CARING FOR YOUR ITEM

Indoor use only.

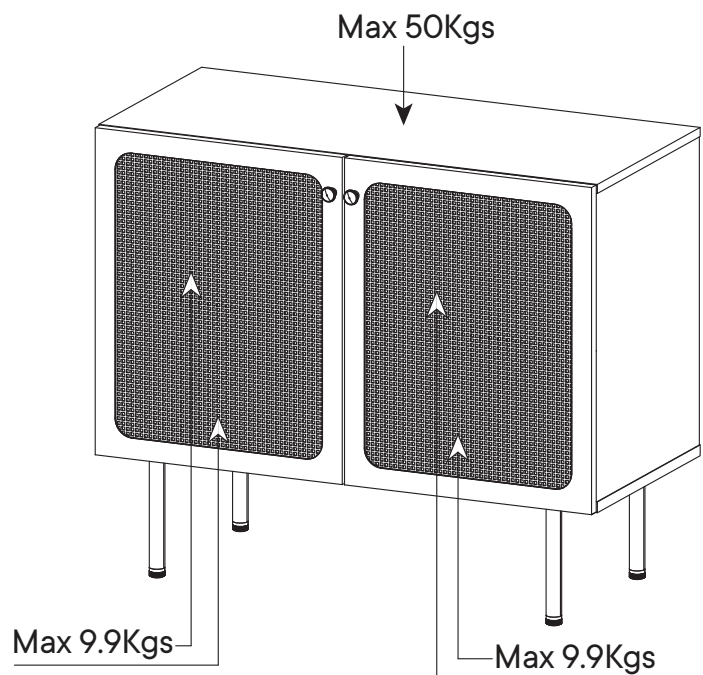
Not contract grade.

Clean using a non-abrasive cloth and a mild cleaner.

Never use harsh chemicals, as they could damage the finish or integrity of the item.

CONNECT WITH US!

Tag us [@modway_furniture](#) and [#modway](#) for a chance to be featured.

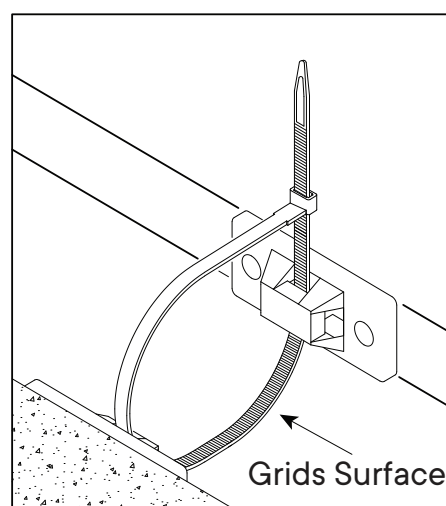
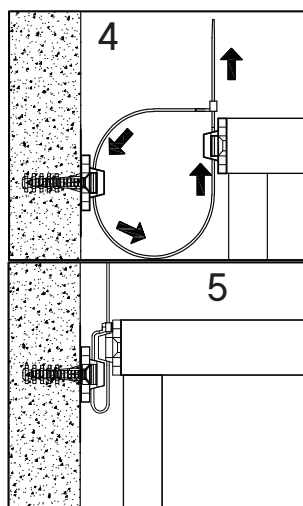
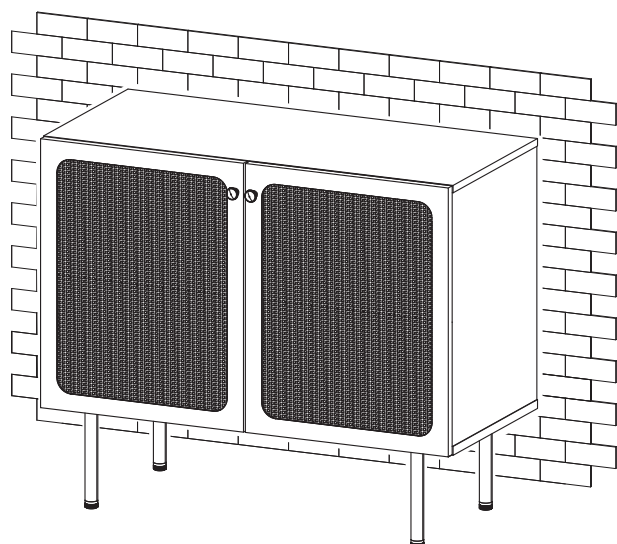
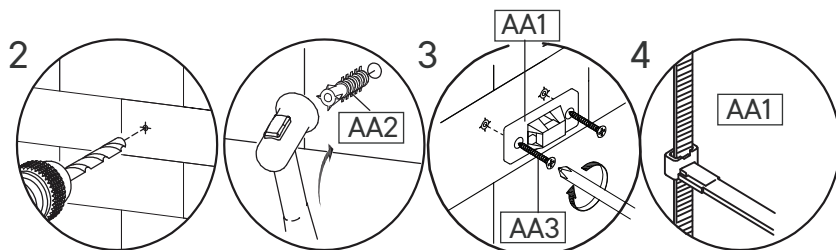
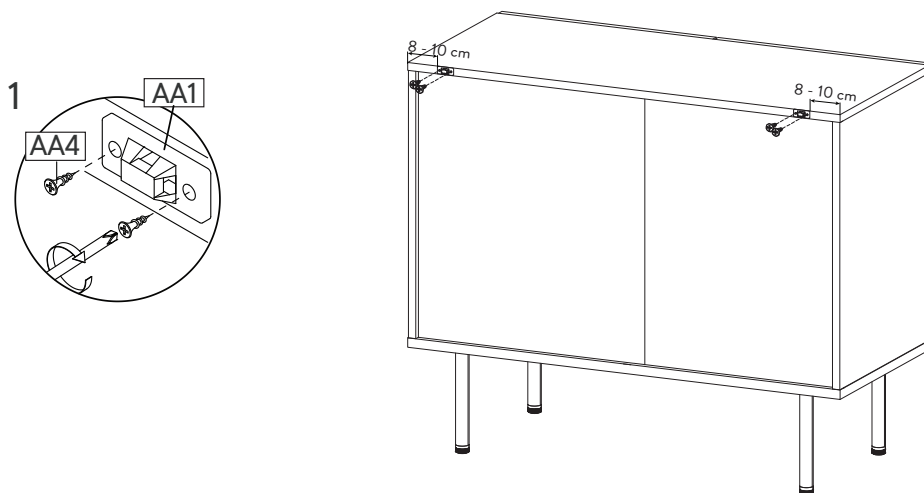
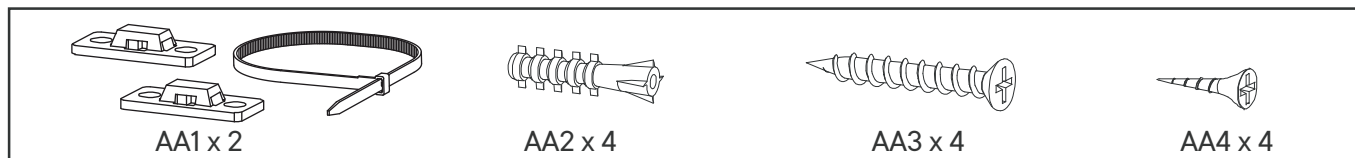


TIPPING RESTRAINTS KIT INSTALLATION GUIDANCE

Different wall materials require unique wall fasteners.

The wall plugs (AA2) and screws (AA3) are designed for fixing to concrete walls only.

Please consult your local hardware store to ensure you are using the correct hardware for you wall type.



1. Attach bracket (AA1) securely to the back top of the furniture using screw (AA4) provided. Allow 8 - 10 cm from each side.
2. Please make a hole for wall plugs position on the wall and minimum 15 mm below bracket secured to the back of unit attach the wall plugs (AA2).
3. Locate the other bracket (AA1) on the wall over wall plugs (AA2). Place furniture into position so both brackets (AA1) are vertically in the line.
4. Lace the end of the restraints strap through the larger hole in each bracket. Ensure the restraints strap with grids surface facing the inner loops. Bring both ends together and slide the flat end through the locking end and draw it through until all slack is removed.
5. Make sure that the strap is securely laced & locked.