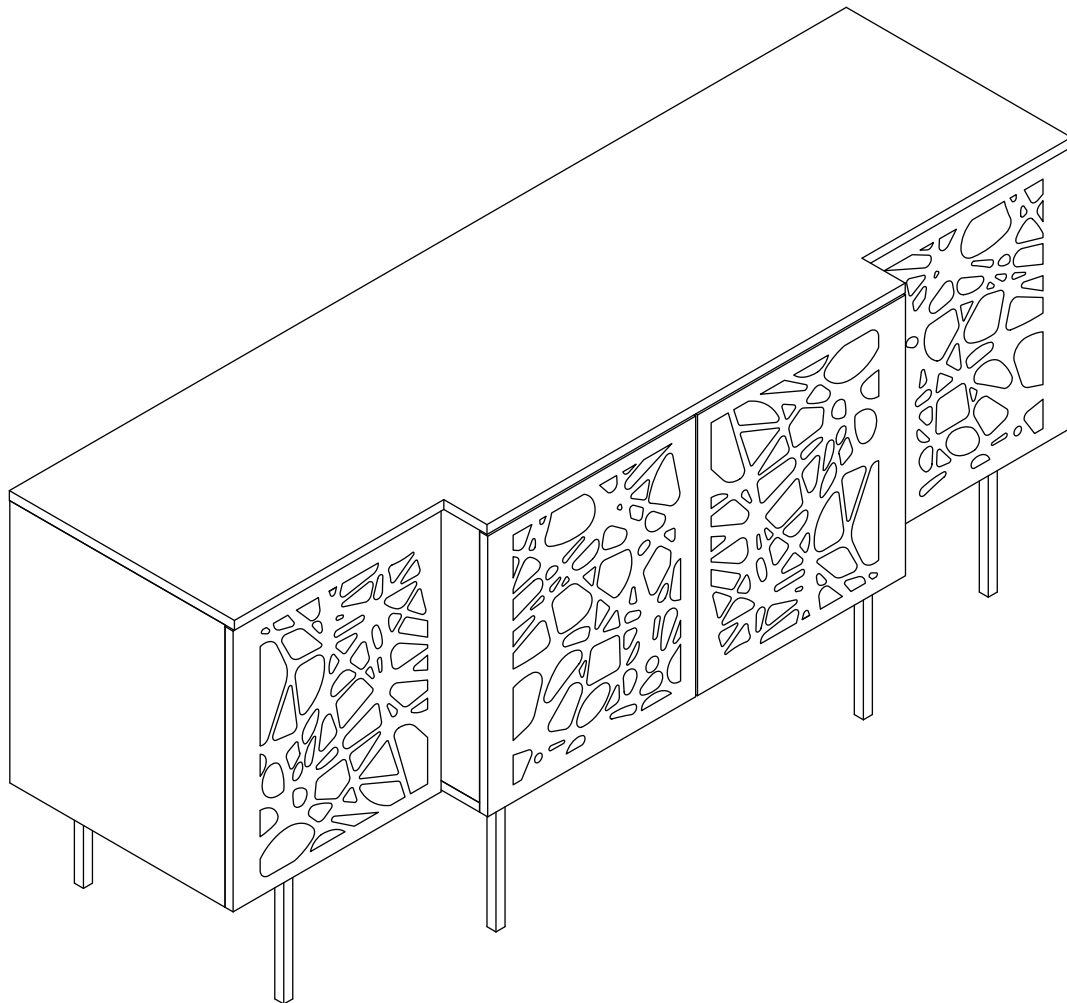


ASSEMBLY INSTRUCTIONS

EEI-4770

V1.07.25.22



Questions? Contact us!

609.256.9000 • cs@modway.com
www.modway.com

***modway**

Let's get started!

*modway



Read through all of the instructions before starting



Care instructions are listed in the last step of this manual



Approx. 60 minutes assembly time



Make sure you have all parts and components before discarding any packing materials



2 people recommended for assembly

Only use hand tools to assemble this item. Do not use power tools. Do not tighten bolts or screws completely until all hardware is lined up and inserted into the holes.

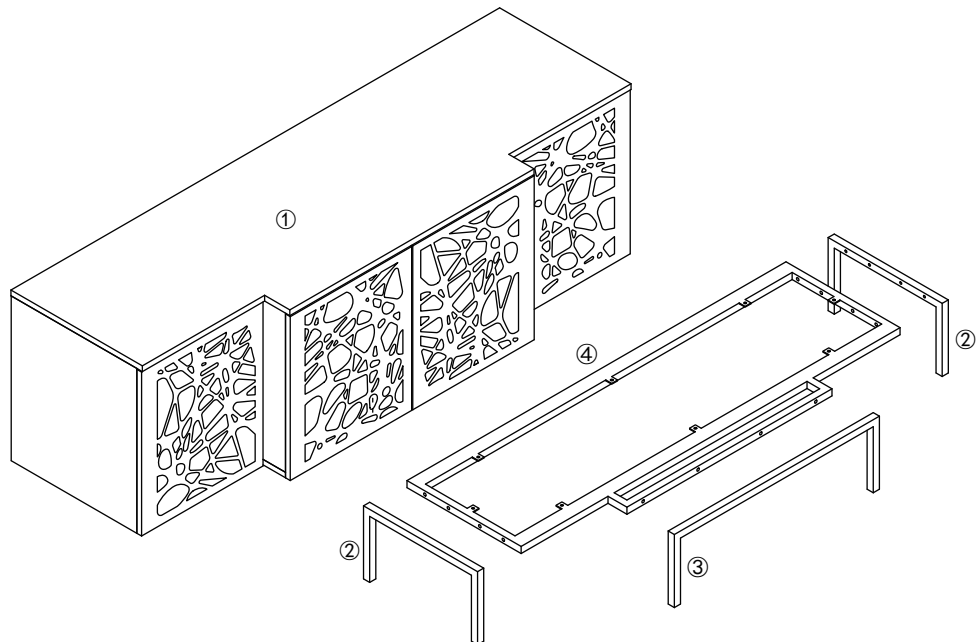
Do not over-tighten screws and bolts to avoid stripping the hardware or cracking the item.

Assemble your item on a flat, carpeted area, with plenty of space to work. This will prevent damage and scratches to your floors or the item while you're assembling the product.

Keep all components and packaging out of reach of children or animals to avoid risk of choking or suffocation.

Furniture components:

1	TV Stand Body	x1
2	Leg	x2
3	Leg	x1
4	Apron	x1



Provided hardware:

A		Anti Tipping 150x28x3mm	x2
B		Bolt M6 x 15mm	x8
C		Flat Washer M6 x 16mm	x8
D		Allen Key M4	x1
E		Push to Open Latch	x4
F		Wall Anchor	x2
G		Bolt M8 x 40mm	x12
H		Allen Key M5	x1

Wait!

Missing parts or hardware? Need assistance?
Contact us before returning your item. We're here to help!
609.256.9000 • cs@modway.com

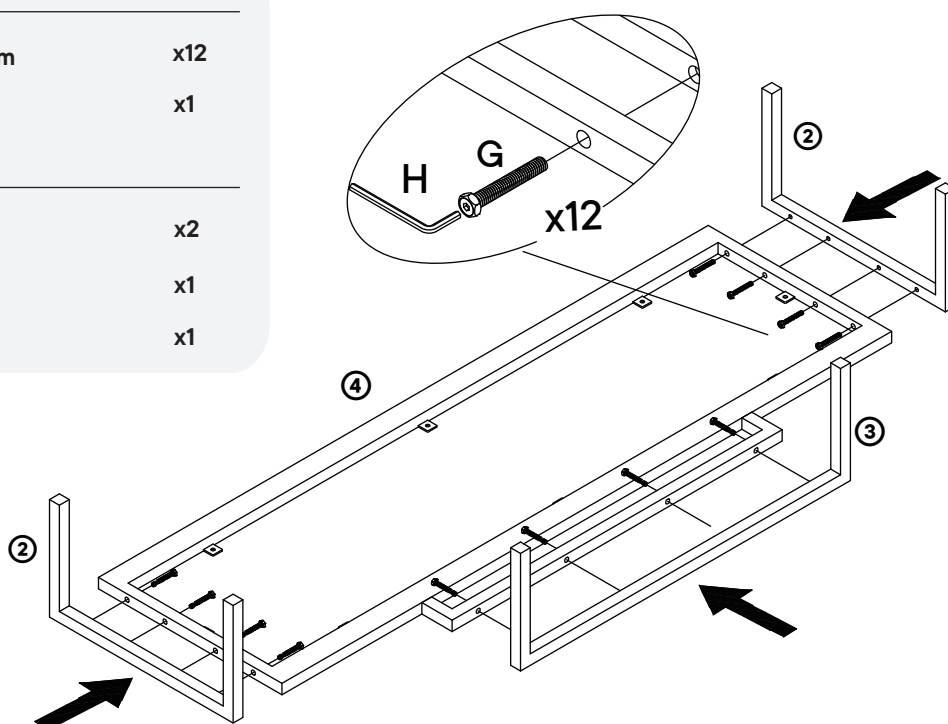
Step 1

HARDWARE

- | | | |
|----------|----------------|-----|
| G | Bolt M8 x 40mm | x12 |
| H | Allen Key M5 | x1 |

COMPONENTS

- | | | |
|----------|-------|----|
| 2 | Leg | x2 |
| 3 | Leg | x1 |
| 4 | Apron | x1 |



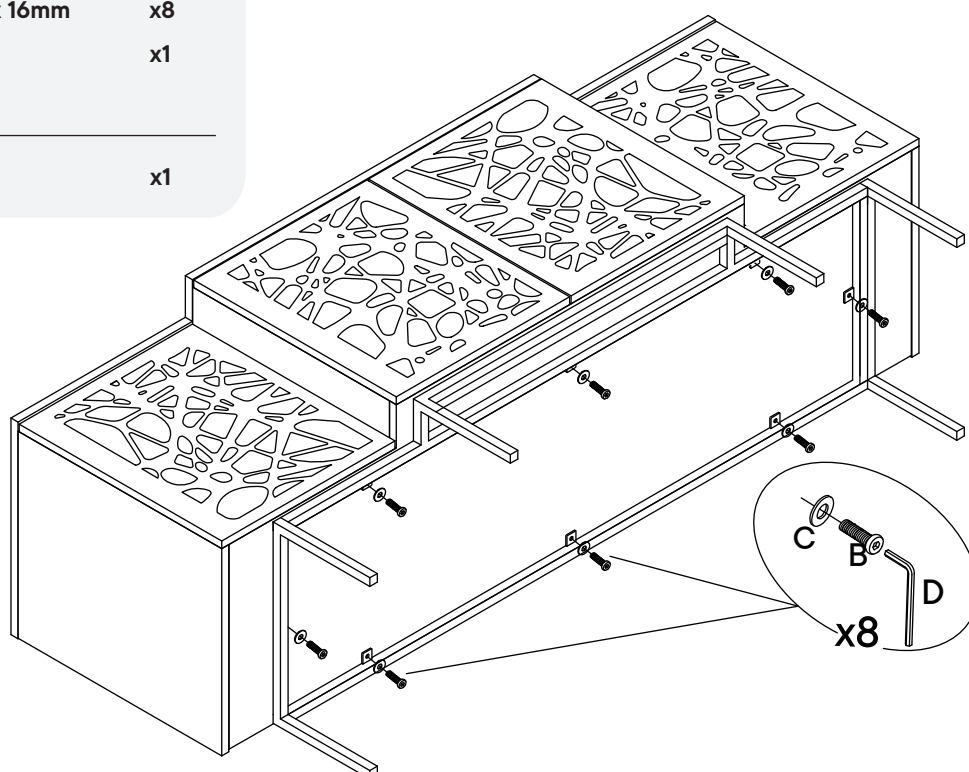
Step 2

HARDWARE

- | | | |
|----------|-----------------------|----|
| B | Bolt M6 x 15mm | x8 |
| C | Flat Washer M6 x 16mm | x8 |
| D | Allen Key M4 | x1 |

COMPONENTS

- | | | |
|----------|---------------|----|
| 1 | TV Stand Body | x1 |
|----------|---------------|----|



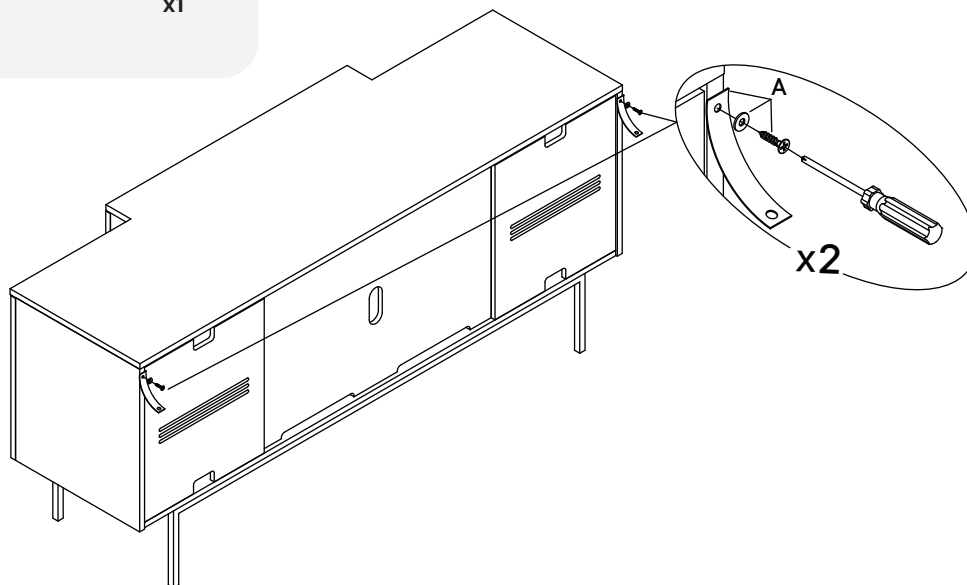
Step 3

HARDWARE

- A** Anti Tipping 150x28x3mm x2

COMPONENTS

- 1** TV Stand Body x1



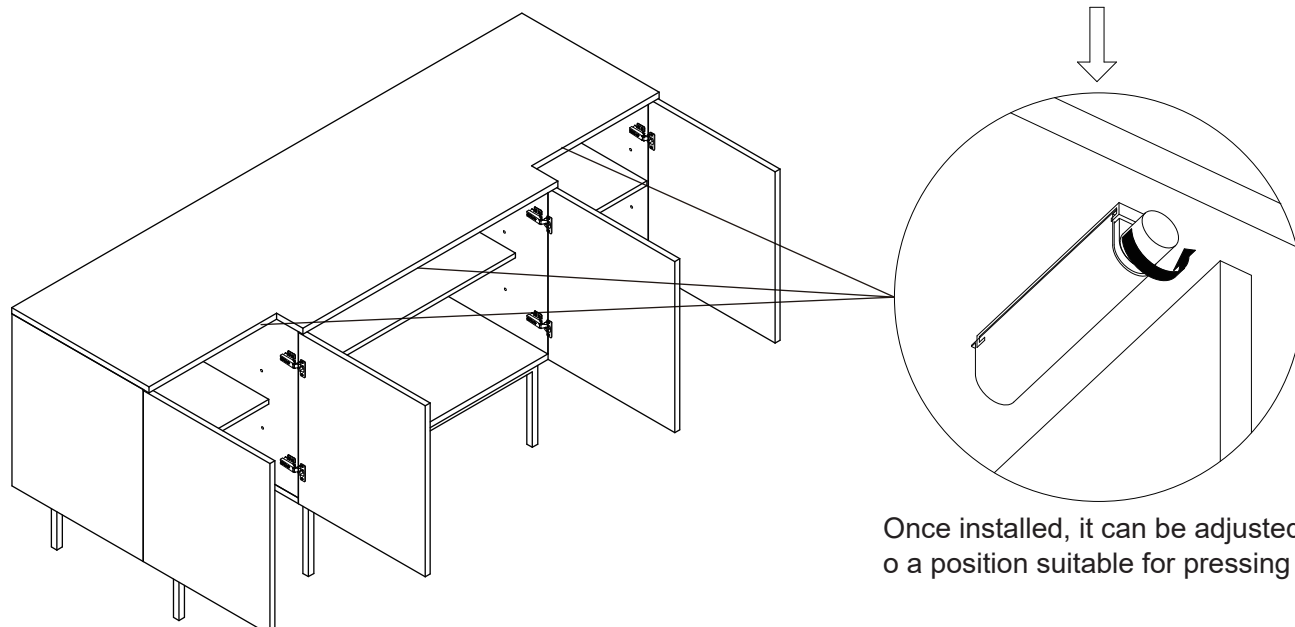
Step 4

HARDWARE

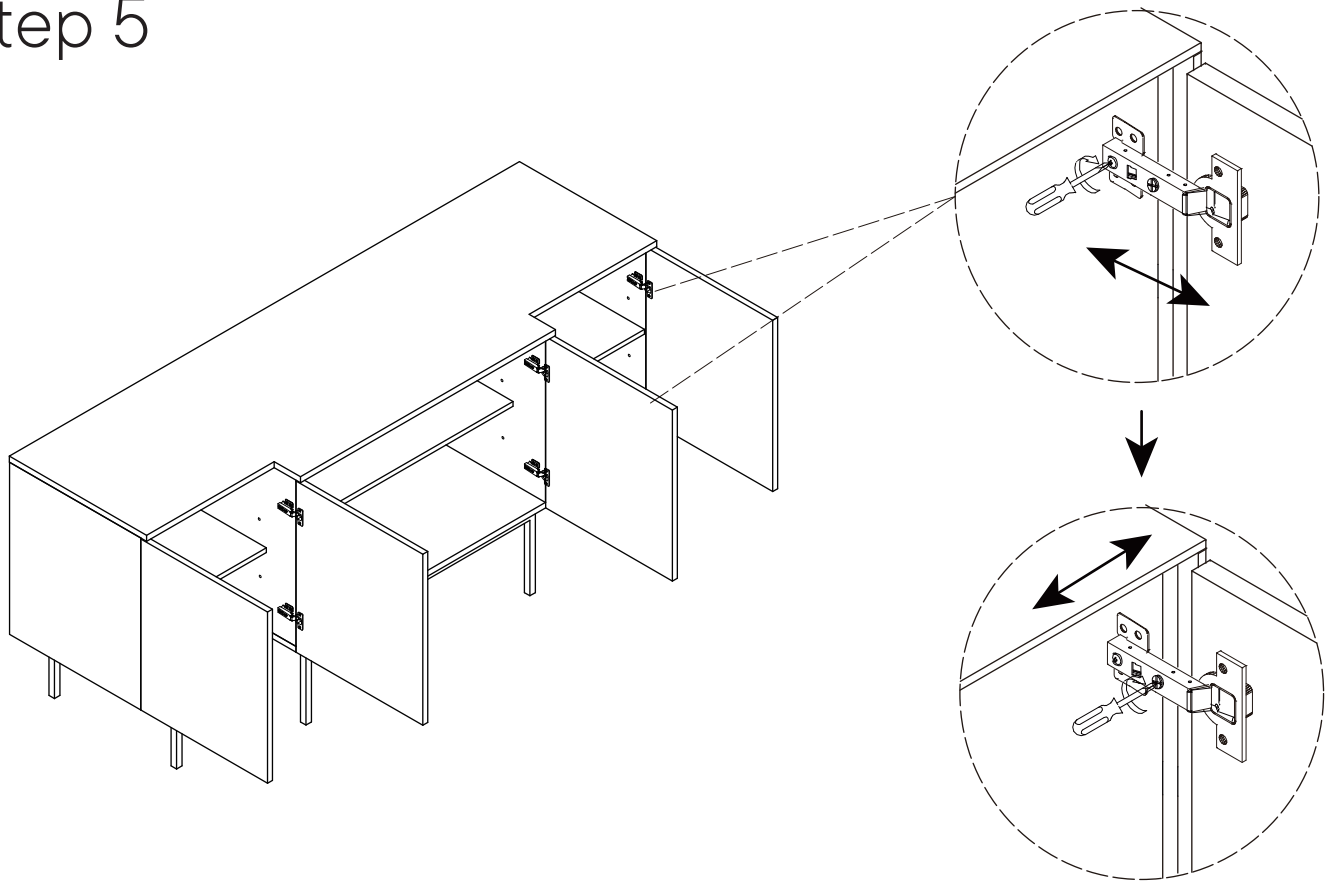
- E** Push to Open Latch x4

COMPONENTS

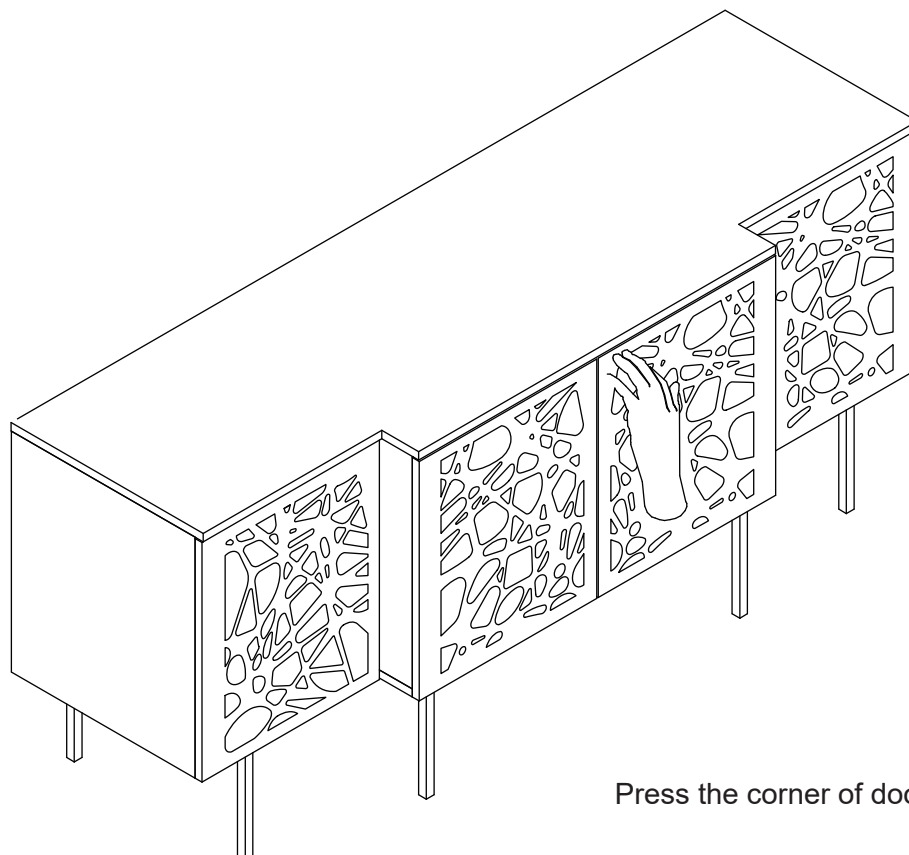
- 1** TV Stand Body x1



Step 5



Step 6



Press the corner of door to open

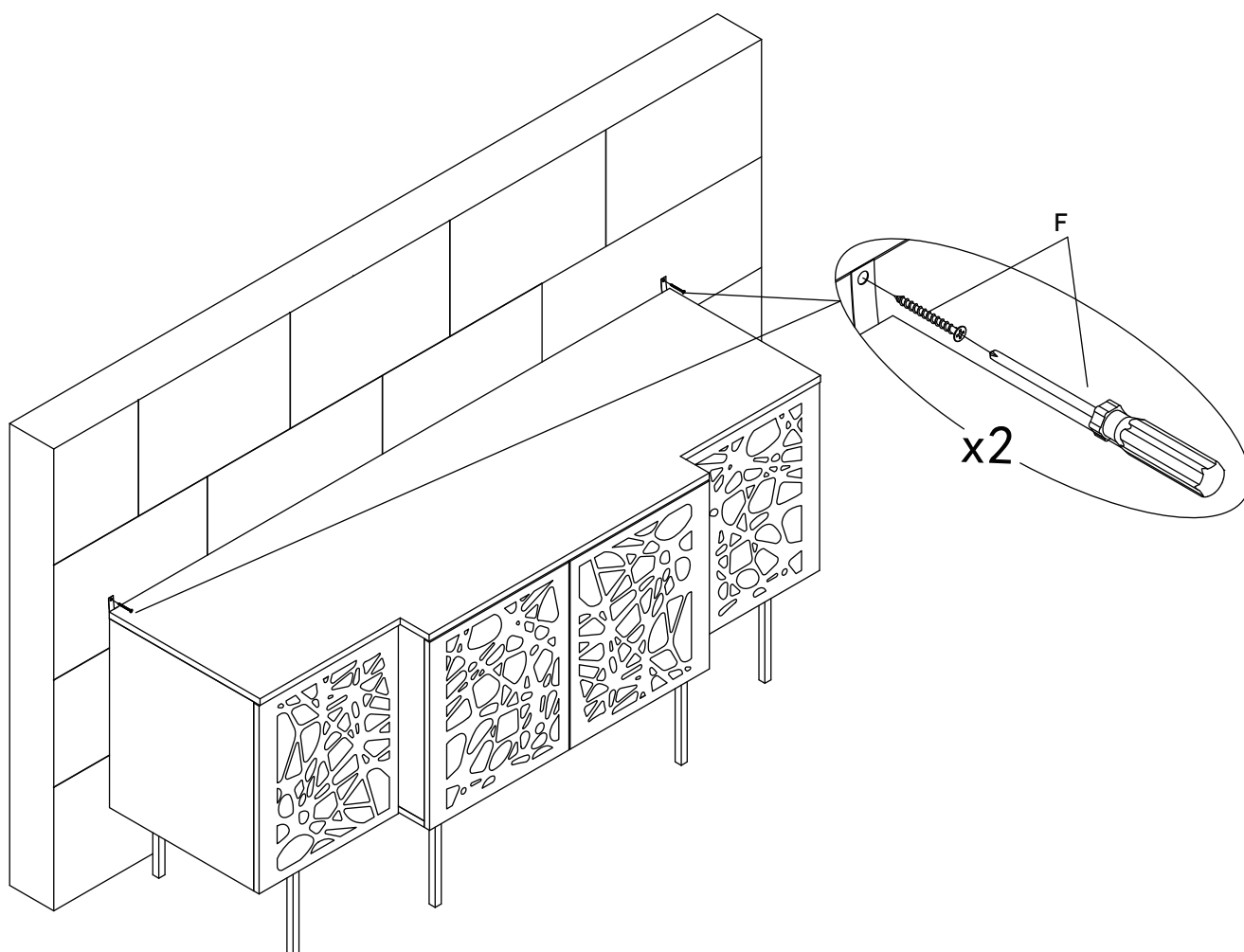
Step 7

HARDWARE

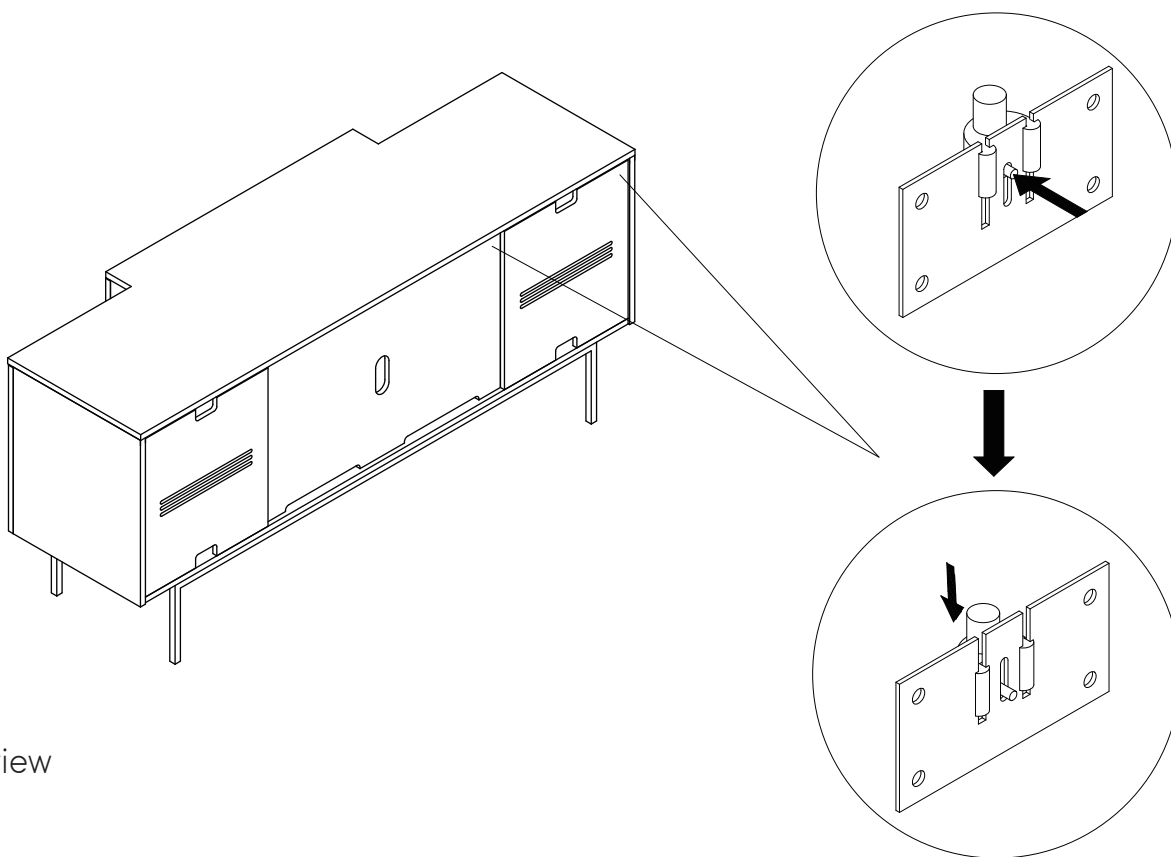
F Wall Anchor x2

COMPONENTS

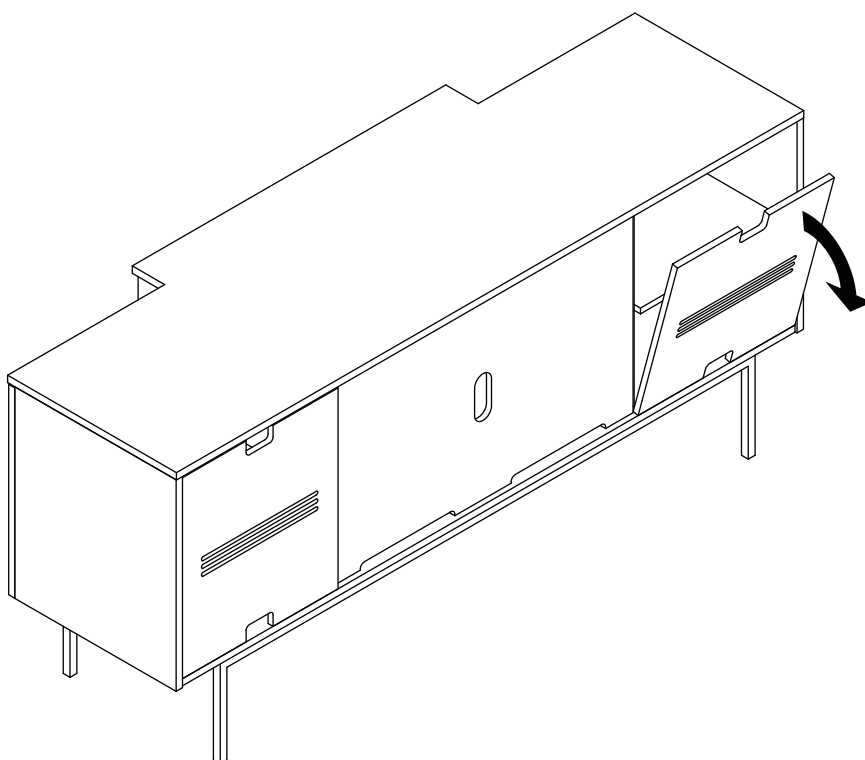
1 TV Stand Body x1



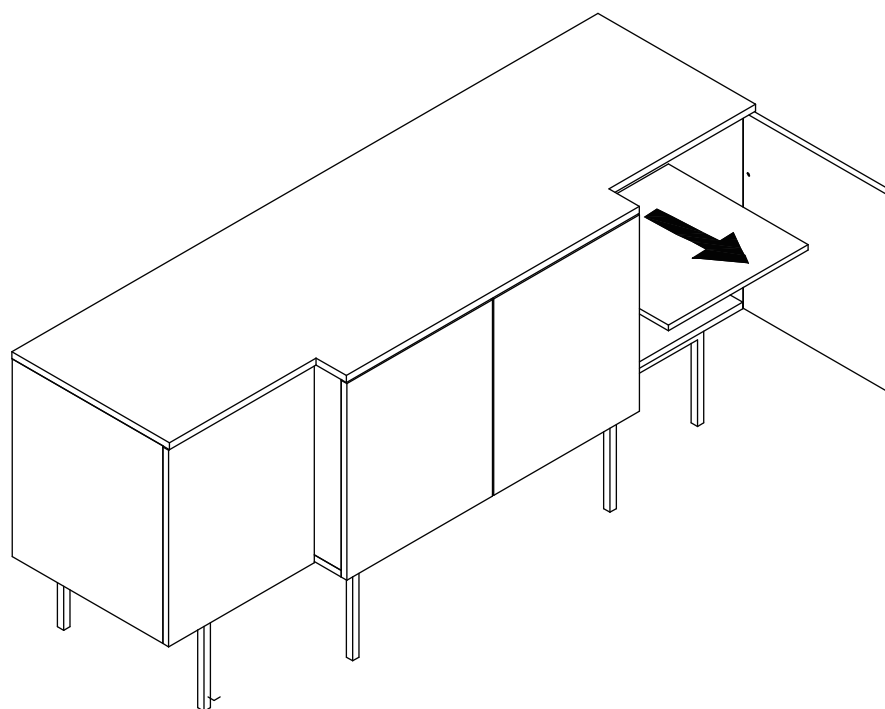
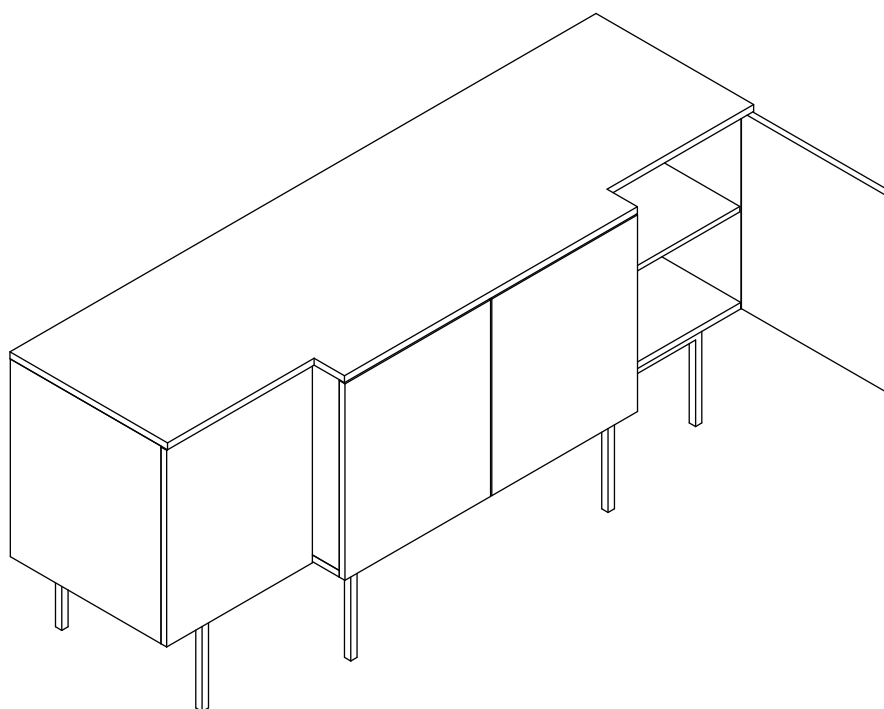
Guide to dismantle the back panel



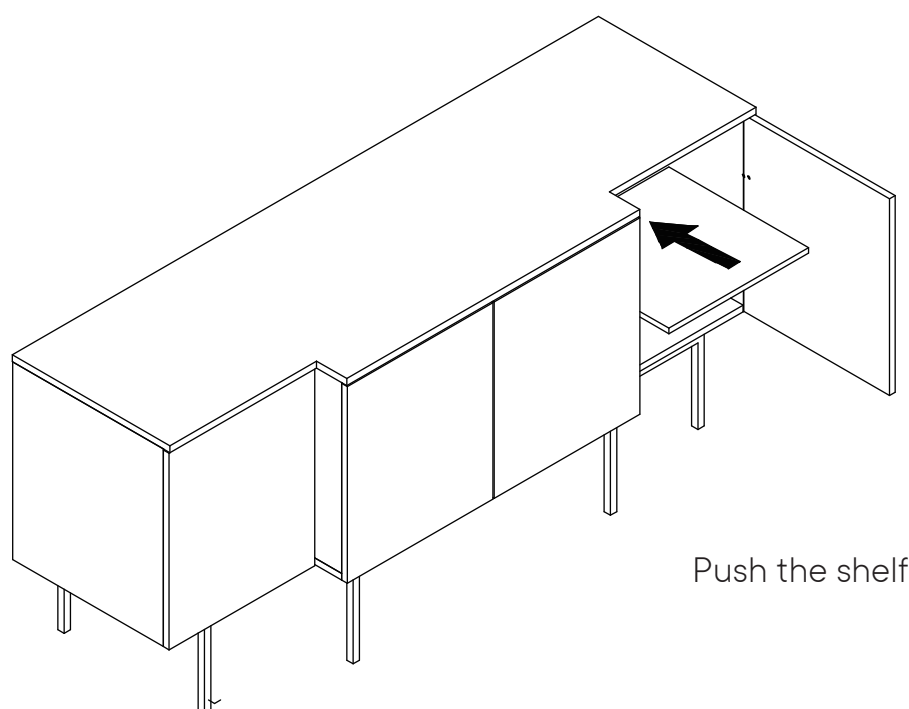
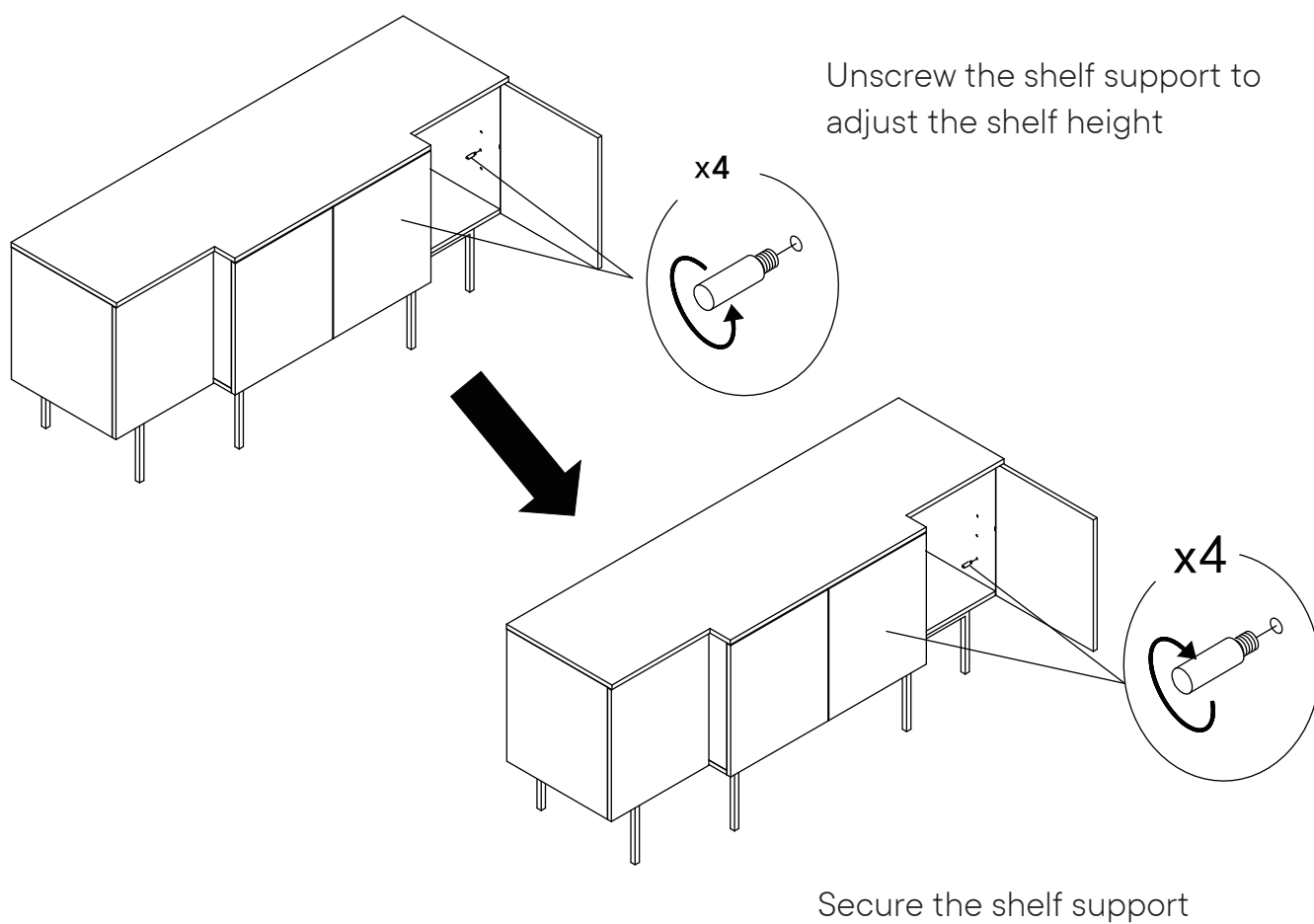
Back view



Guide to adjust the shelf height



Open the door and pull out the shelf



Great job!

TV stand assembly is complete

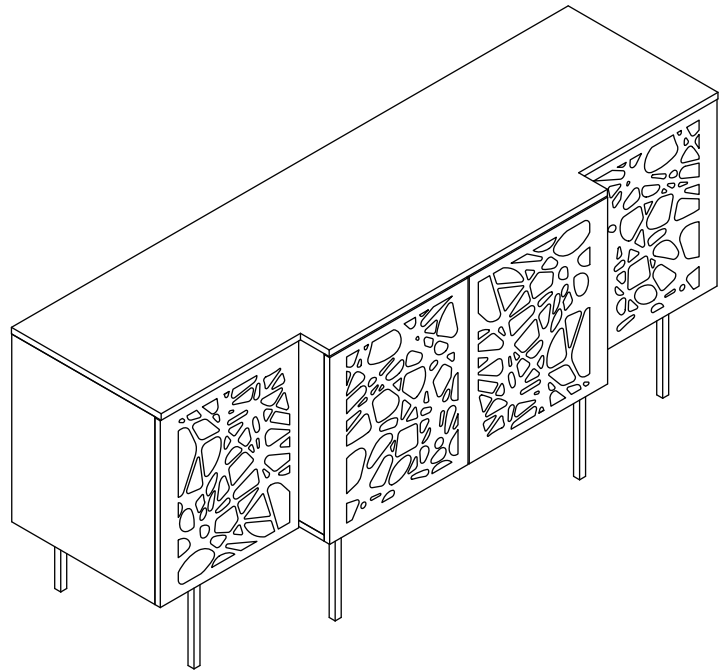
♥ CARING FOR YOUR ITEM

Indoor use only.

Not contract grade.

Clean using a non-abrasive cloth and a mild cleaner.

Never use harsh chemicals, as they could damage the finish or integrity of the item.



CONNECT WITH US!

Tag us **@modway_furniture** and **#modway** for a chance to be featured.