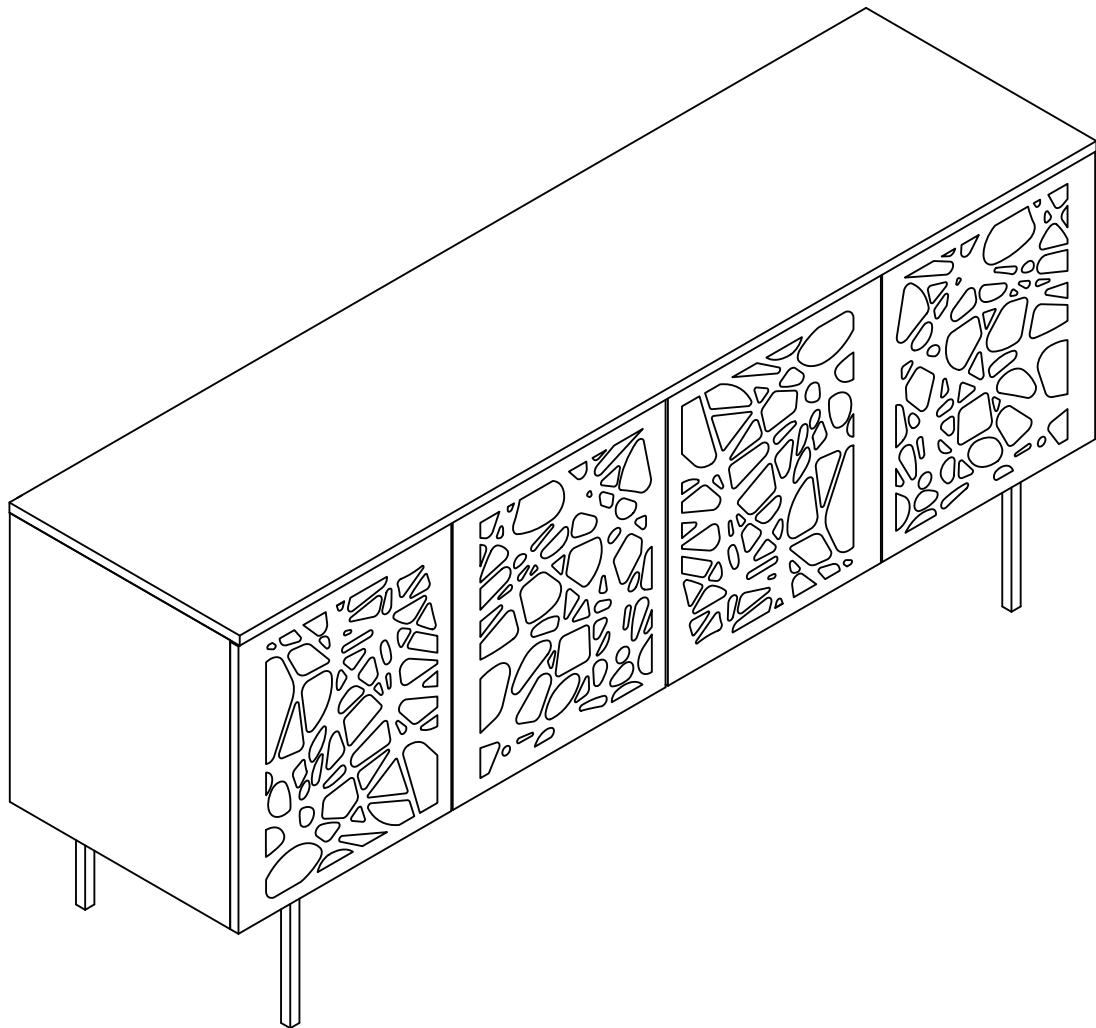


## ASSEMBLY INSTRUCTIONS

# EEI-4767

V1.07.25.22



### Questions? Contact us!

609.256.9000 • [cs@modway.com](mailto:cs@modway.com)  
[www.modway.com](http://www.modway.com)

**\*modway**

# Let's get started!

\*modway



Read through all of the instructions before starting



Approx. 60 minutes assembly time



2 people recommended for assembly



Care instructions are listed in the last step of this manual



Make sure you have all parts and components before discarding any packing materials

**Only use hand tools to assemble this item.** Do not use power tools. Do not tighten bolts or screws completely until all hardware is lined up and inserted into the holes.

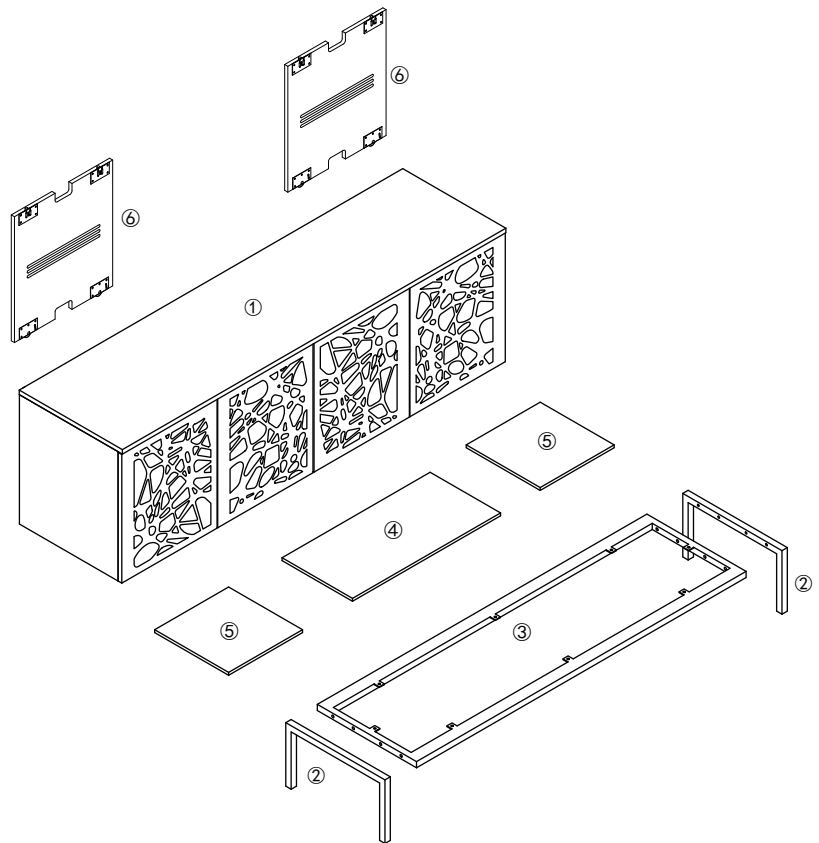
Do not over-tighten screws and bolts to avoid stripping the hardware or cracking the item.

Assemble your item on a flat, carpeted area, with plenty of space to work. This will prevent damage and scratches to your floors or the item while you're assembling the product.

Keep all components and packaging out of reach of children or animals to avoid risk of choking or suffocation.

## Furniture components:

1	TV Stand Body	x1
2	Leg	x2
3	Apron	x1
4	Long Shelf	x1
5	Short Shelf	x2
6	Back Panel	x2



## Provided hardware:

A		Anti Tipping 150x28x3mm	x2
B		Bolt M6 x 15mm	x8
C		Flat Washer M6 x 16mm	x8
D		Allen Key M4	x1
E		Push to Open Latch	x4
F		Wall Anchor	x2
G		Bolt M8 x 40mm	x8
H		Allen Key M5	x1
I		Shelf Support	x12
J		Flat Washer M8 x 18mm	x8

## What you need:



Phillips



Phillips Head Screwdriver

Wait!

Missing parts or hardware? Need assistance?  
Contact us before returning your item. We're here to help!  
609.256.9000 • cs@modway.com

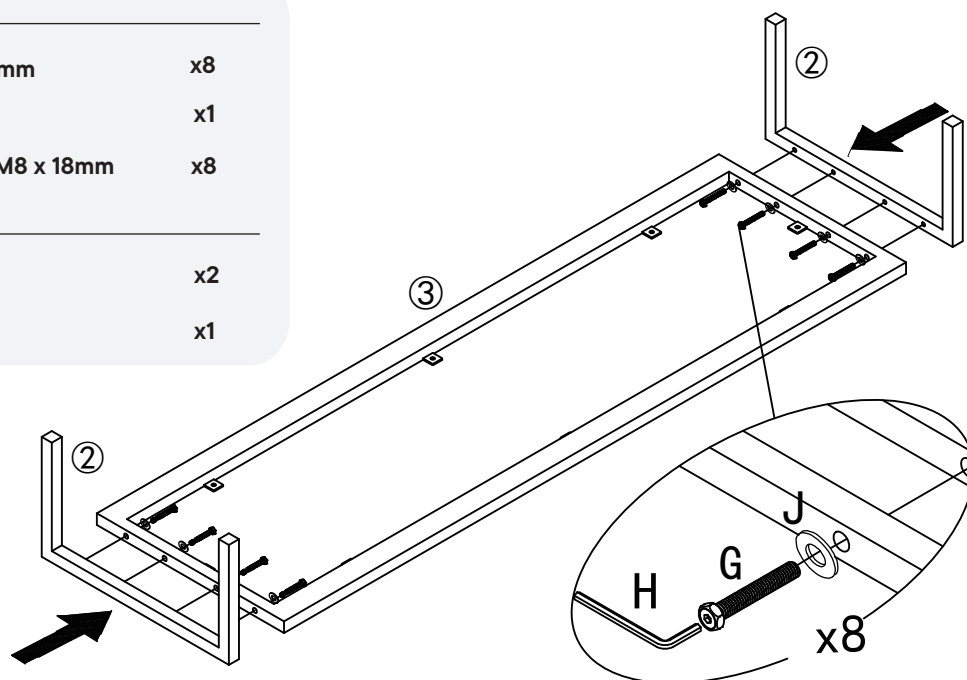
# Step 1

## HARDWARE

<b>G</b>	Bolt M8 x 40mm	x8
<b>H</b>	Allen Key M5	x1
<b>J</b>	Flat Washer M8 x 18mm	x8

## COMPONENTS

<b>2</b>	Leg	x2
<b>3</b>	Apron	x1



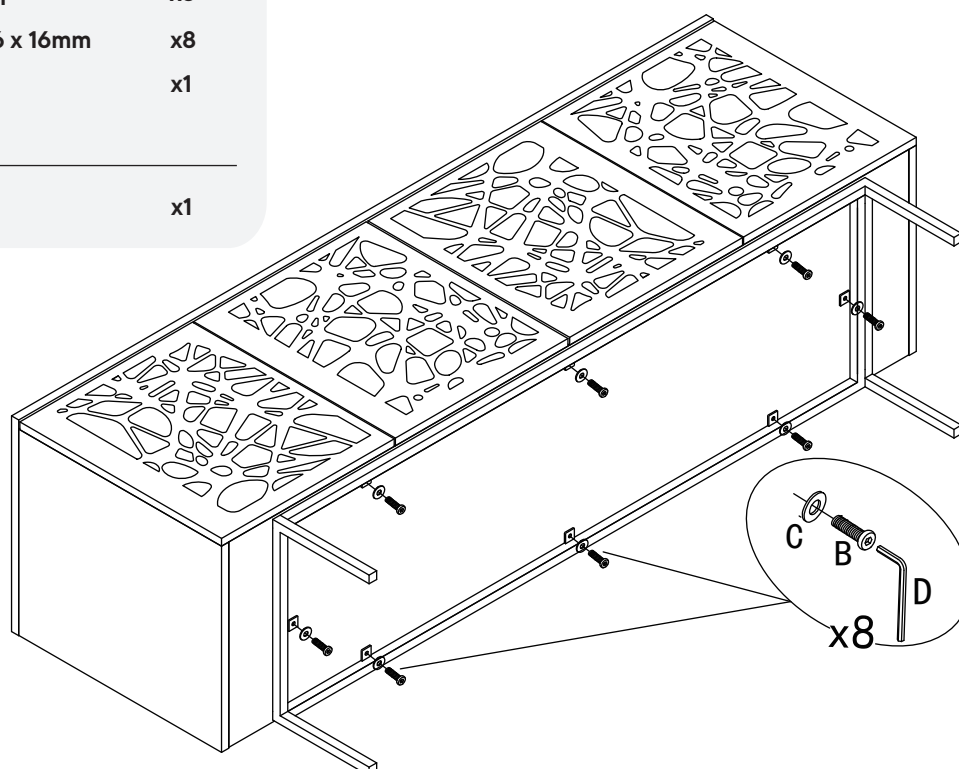
# Step 2

## HARDWARE

<b>B</b>	Bolt M6 x 15mm	x8
<b>C</b>	Flat Washer M6 x 16mm	x8
<b>D</b>	Allen Key M4	x1

## COMPONENTS

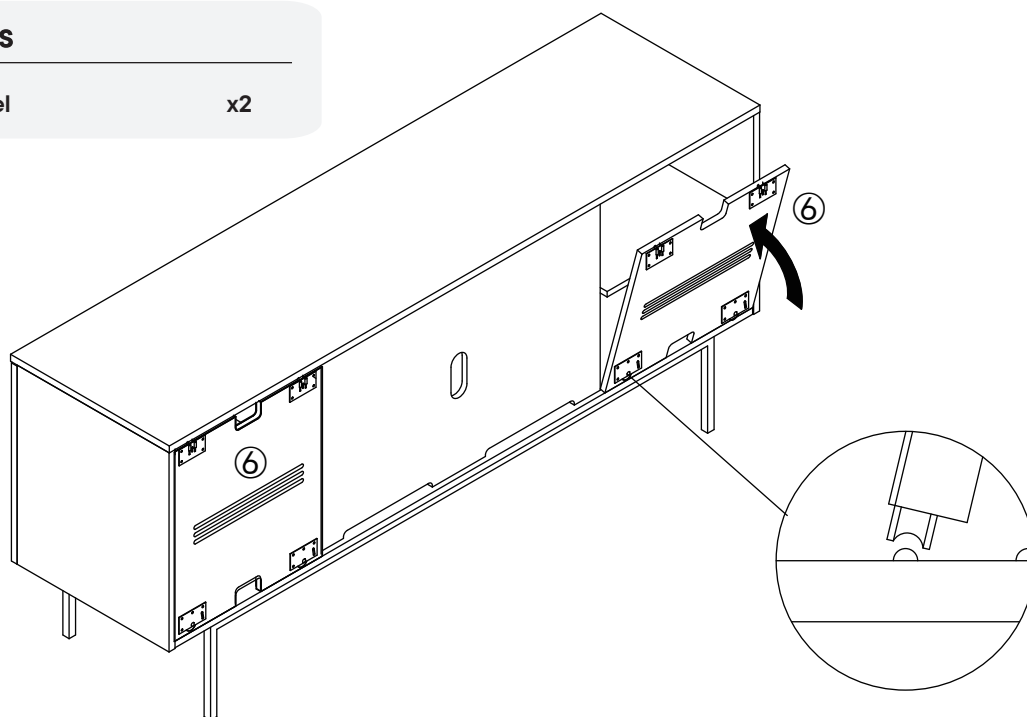
<b>1</b>	TV Stand Body	x1
----------	---------------	----



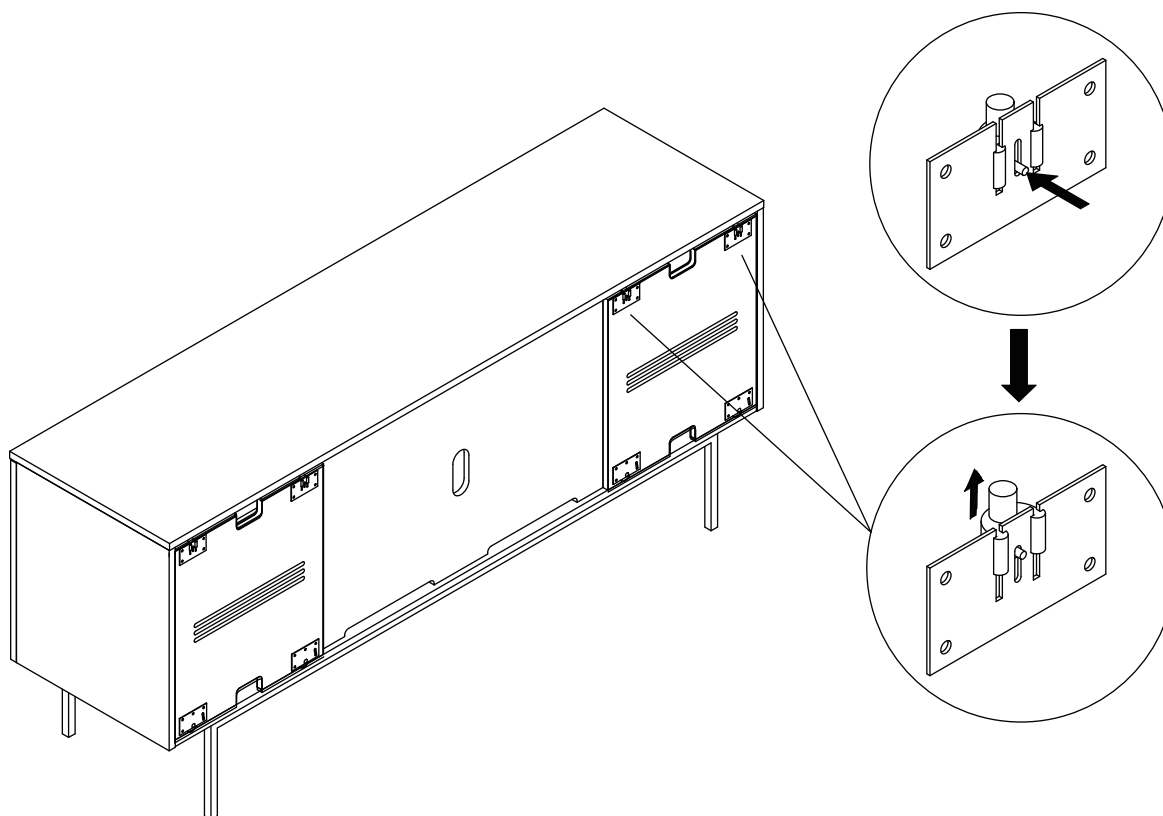
# Step 3

## COMPONENTS

6 Back Panel x2



# Step 4



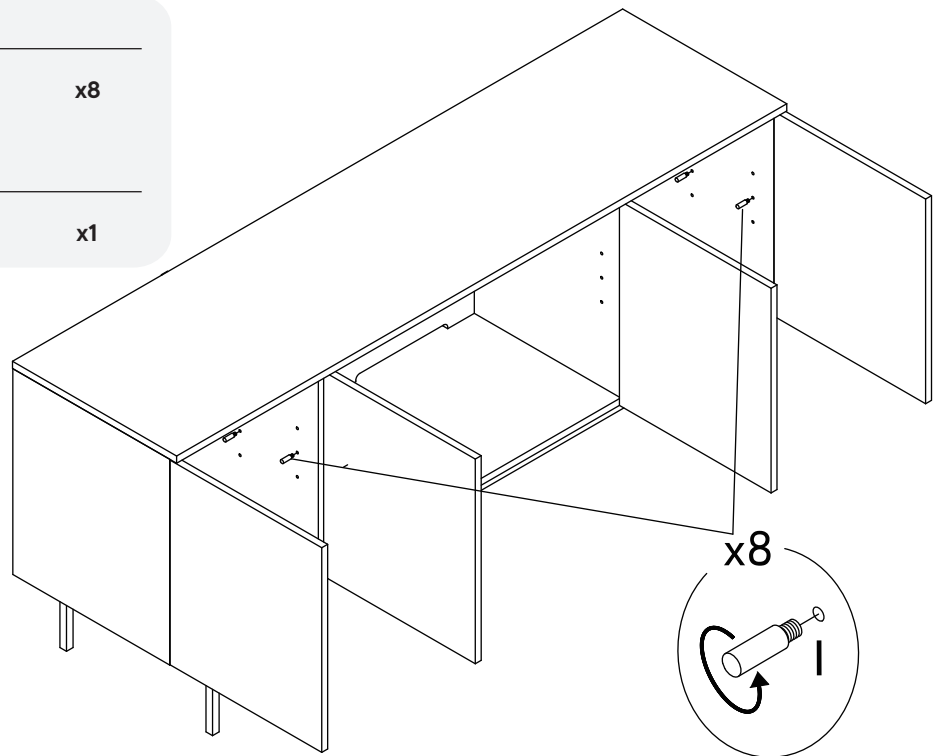
## Step 5

### HARDWARE

**1** Shelf Support x8

### COMPONENTS

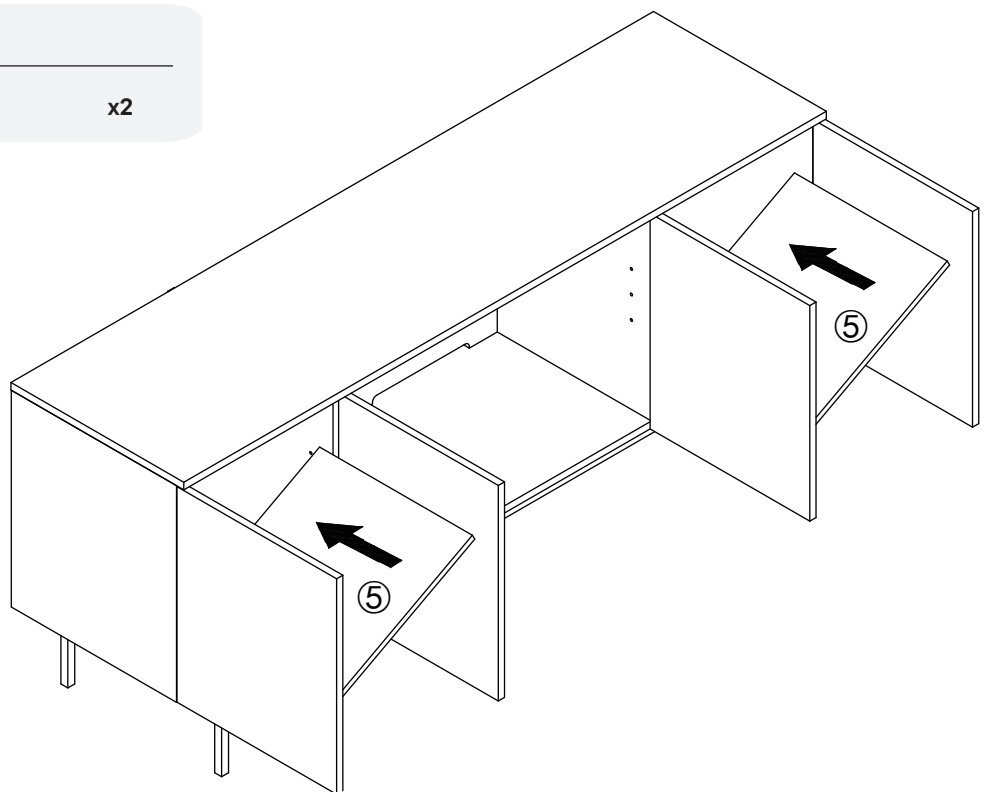
**1** TV Stand Body x1



## Step 6

### COMPONENTS

**5** Short Shelf x2



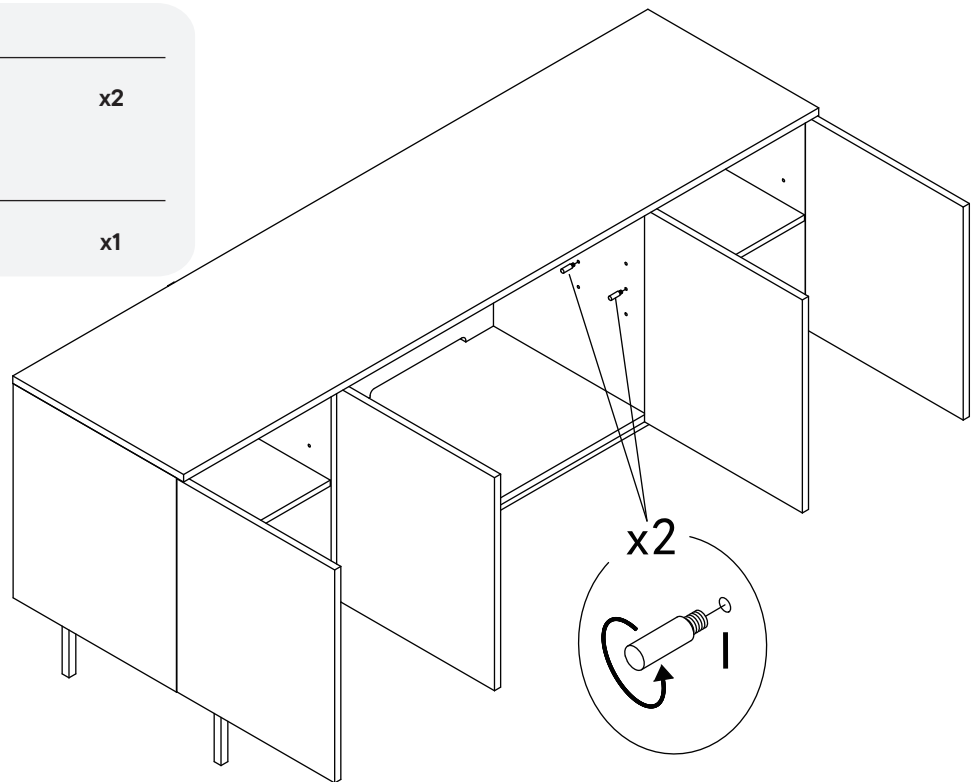
## Step 7

### HARDWARE

- ① Shelf Support x2

### COMPONENTS

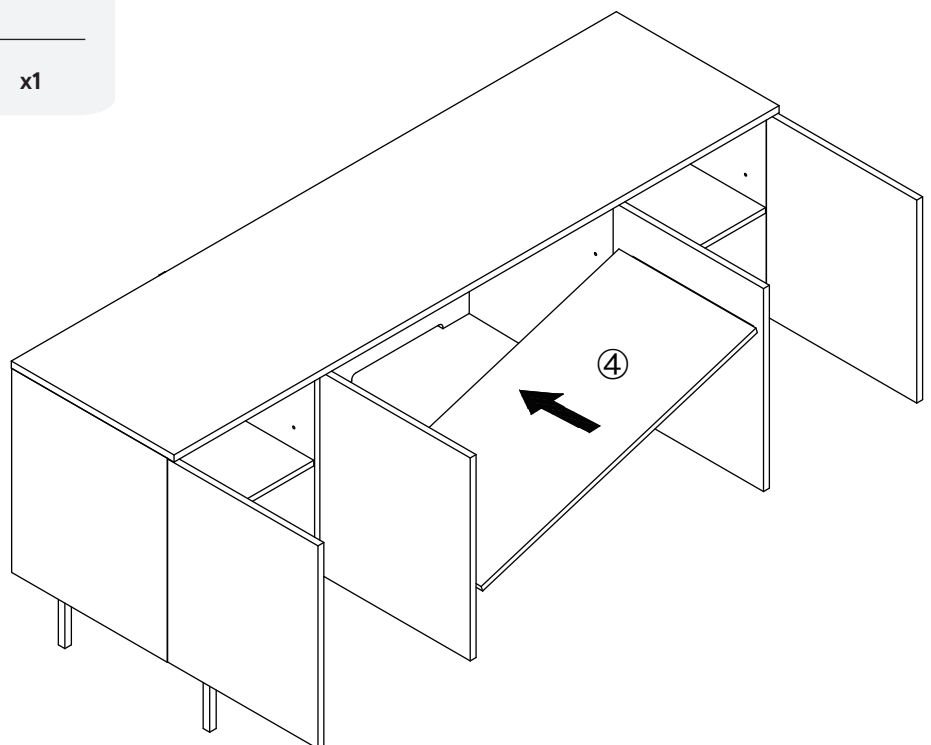
- ① TV Stand Body x1



## Step 8

### COMPONENTS

- ④ Long Shelf x1



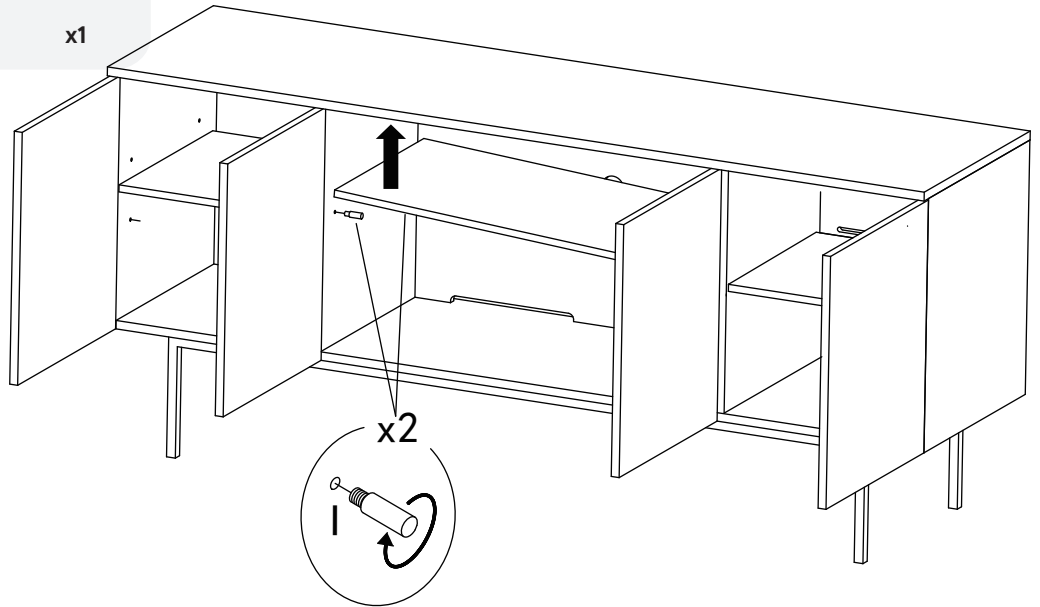
## Step 9

### HARDWARE

- I** Shelf Support x2

### COMPONENTS

- 1** TV Stand Body x1



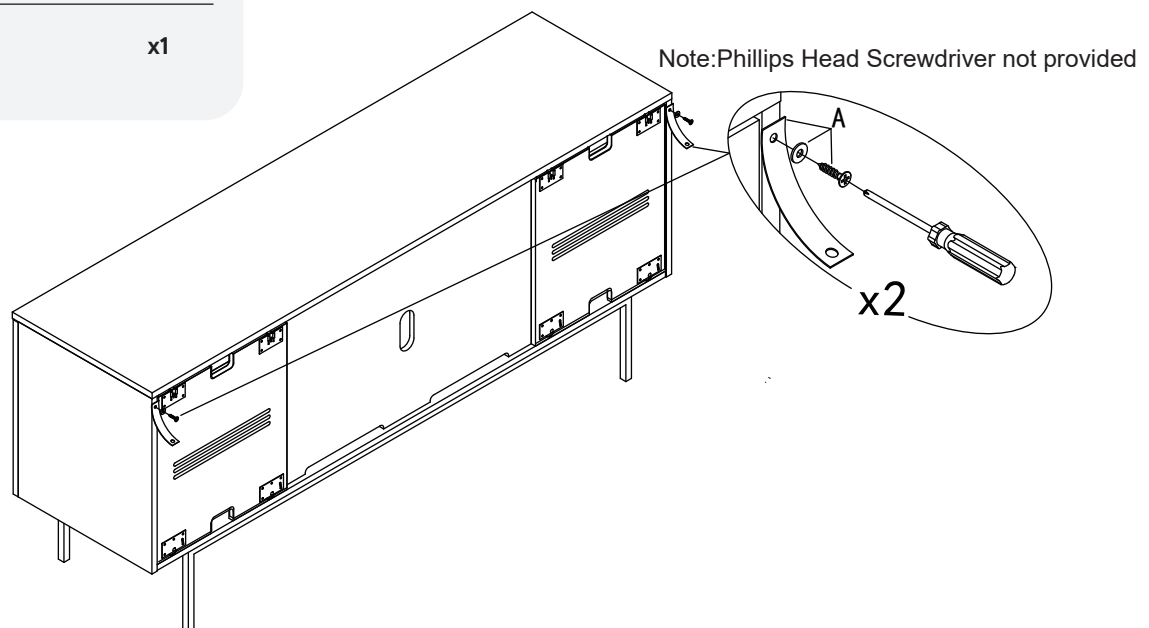
## Step 10

### HARDWARE

- A** Anti Tipping 150x28x3mm x2

### COMPONENTS

- 1** TV Stand Body x1



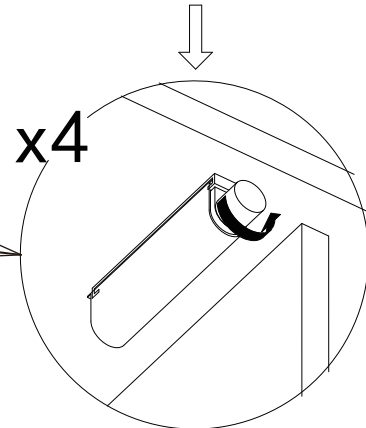
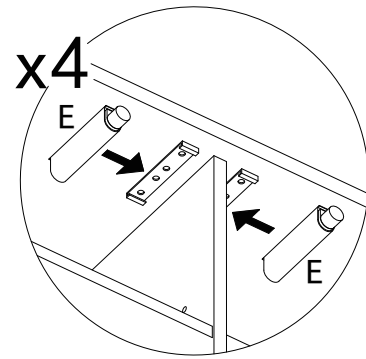
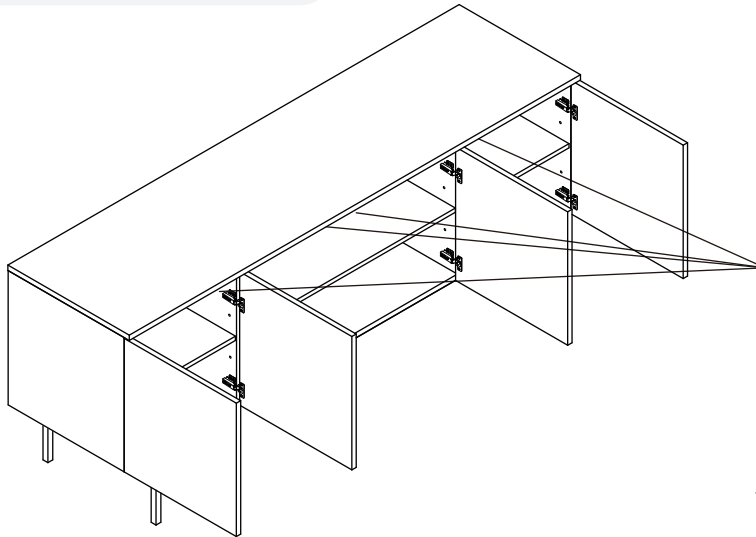
## Step 11

### HARDWARE

**E** Push to Open Latch x4

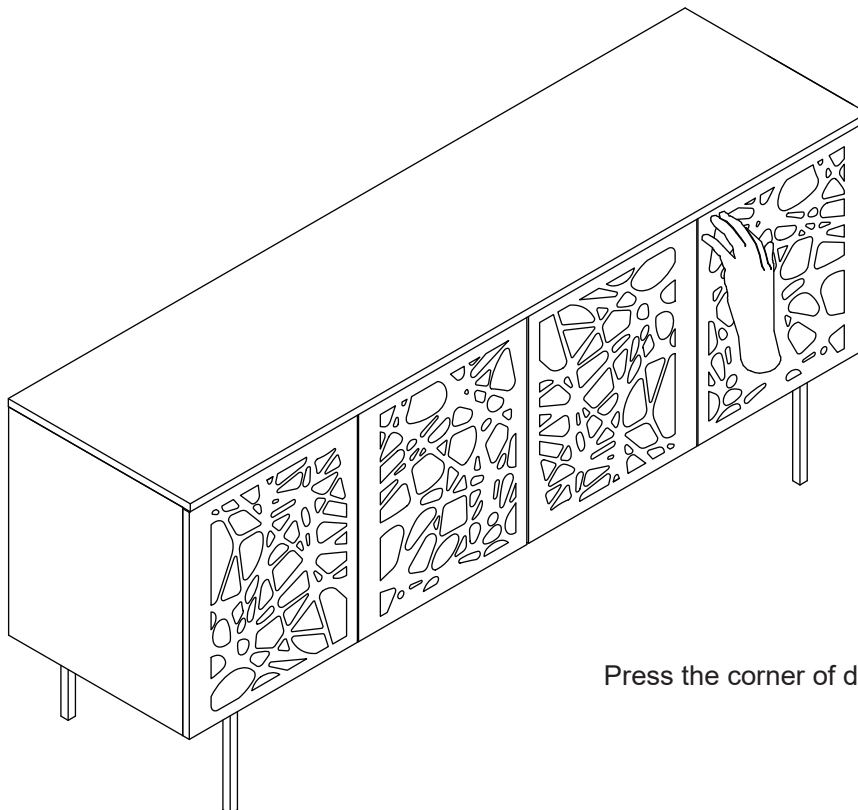
### COMPONENTS

**1** TV Stand Body x1



Once installed, it can be adjusted to a position suitable for pressing

## Step 12



Press the corner of door to open



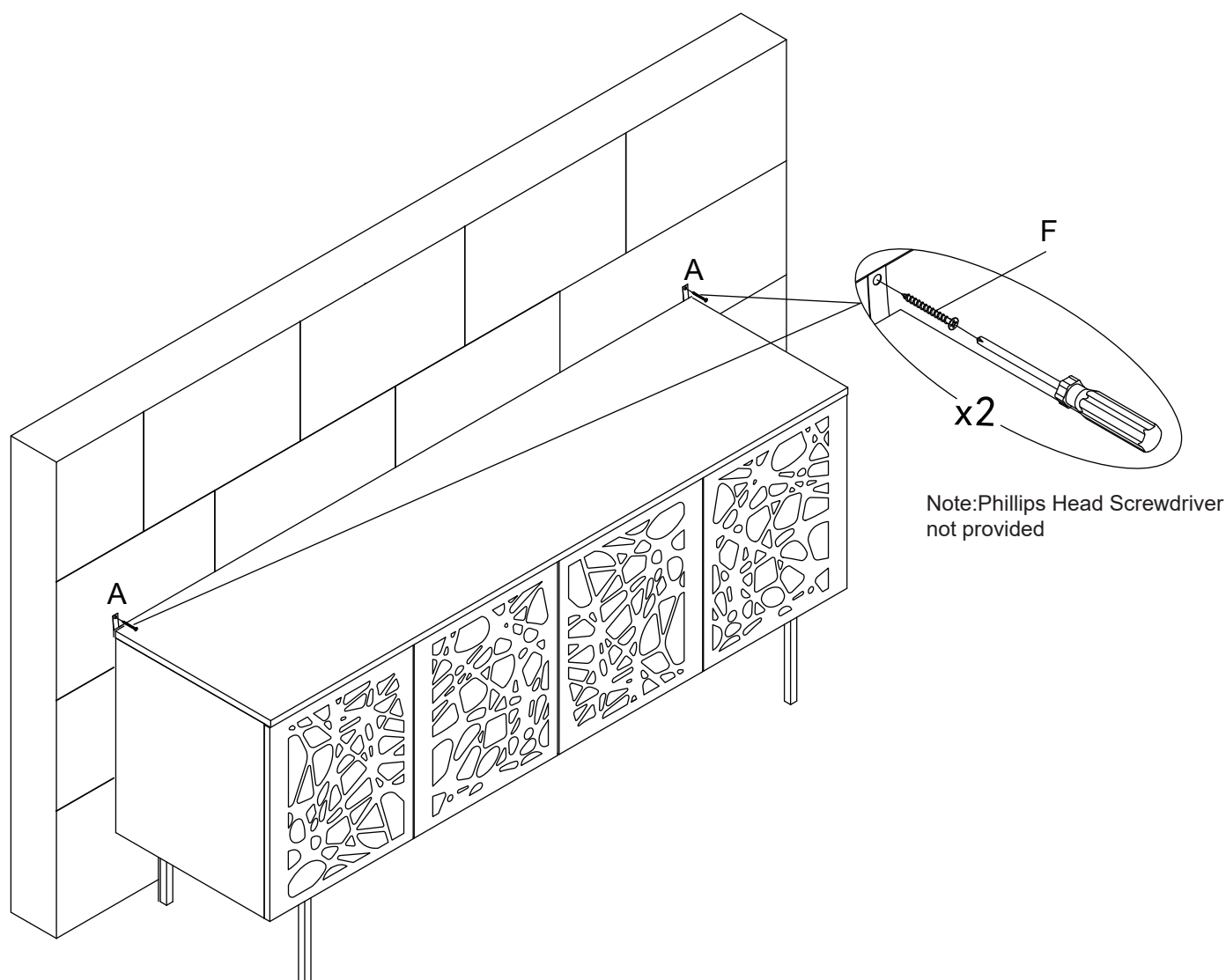
# Step 13

## HARDWARE

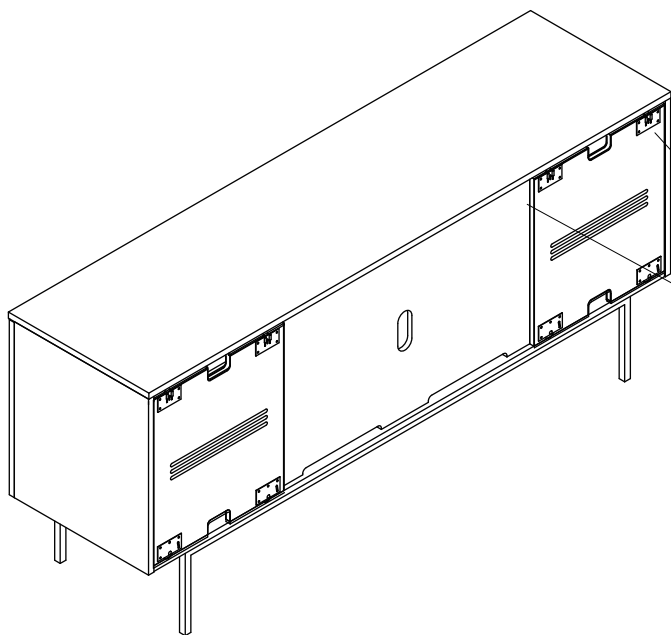
- A** Anti Tipping 150x28x3mm x2
- F** Wall Anchor x2

## COMPONENTS

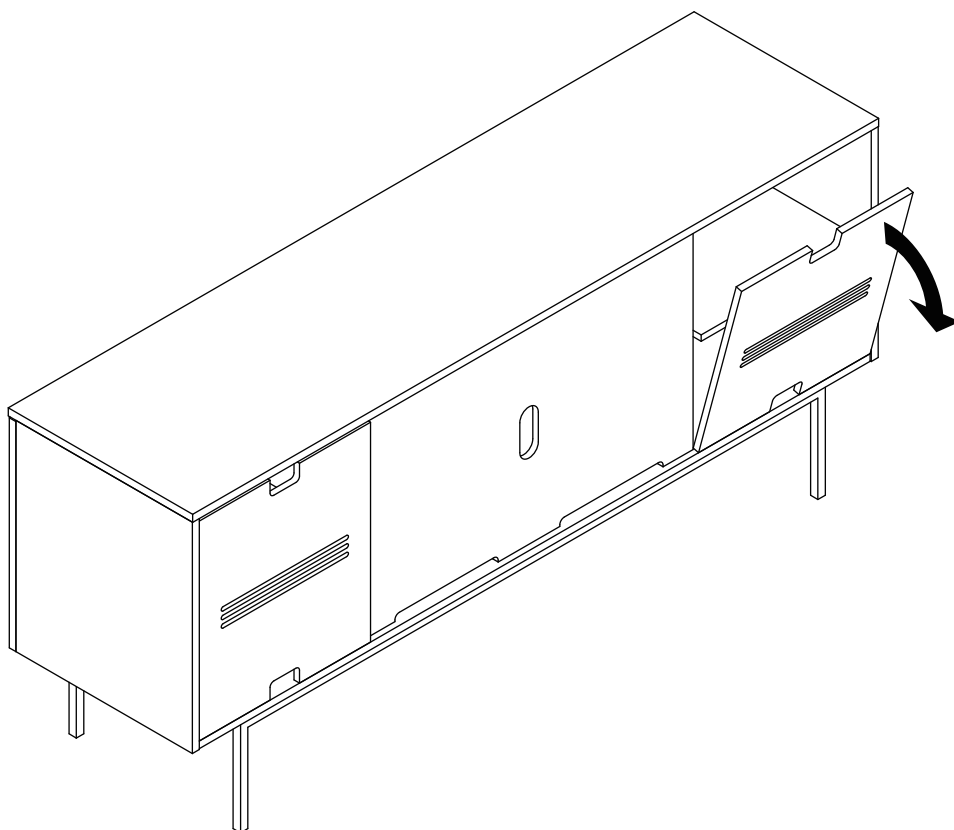
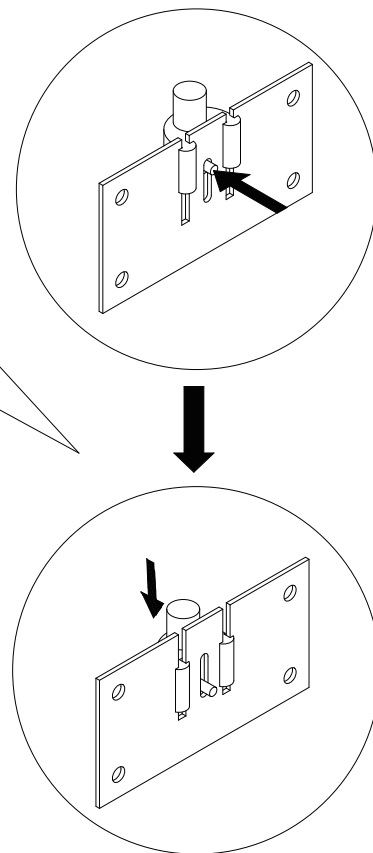
- 1** TV Stand Body x1



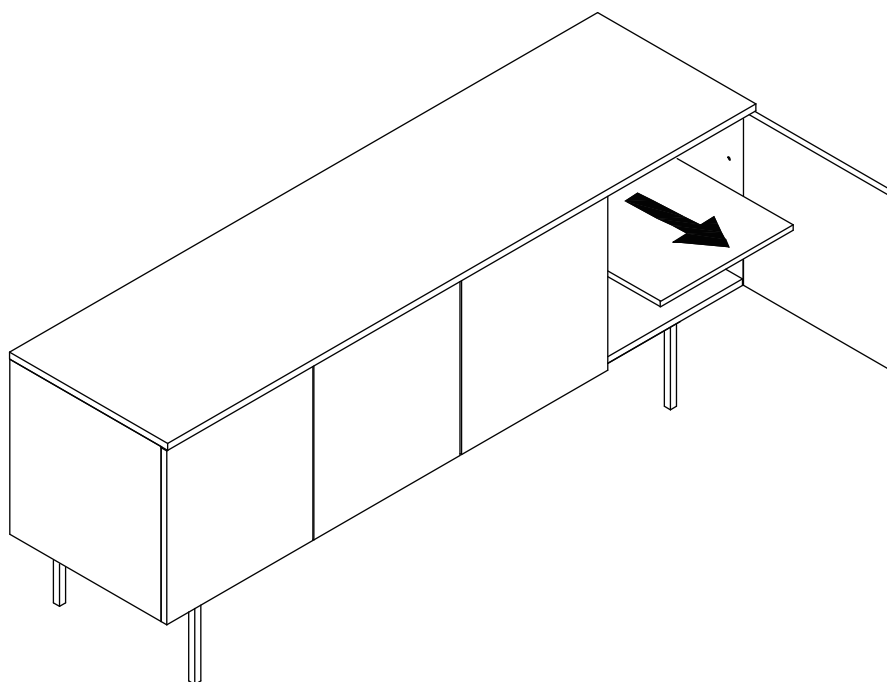
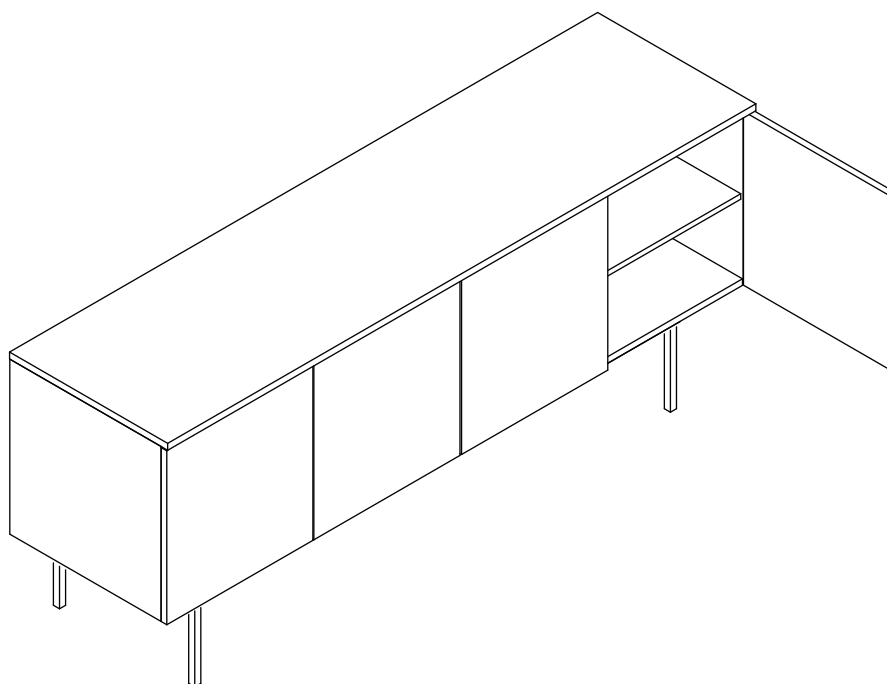
## Guide to dismantle the back panel



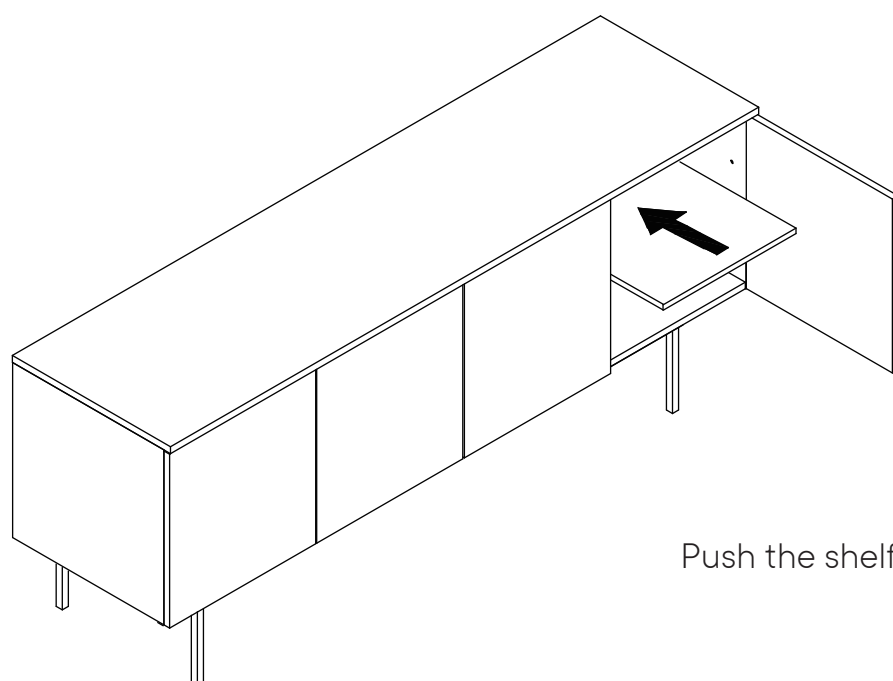
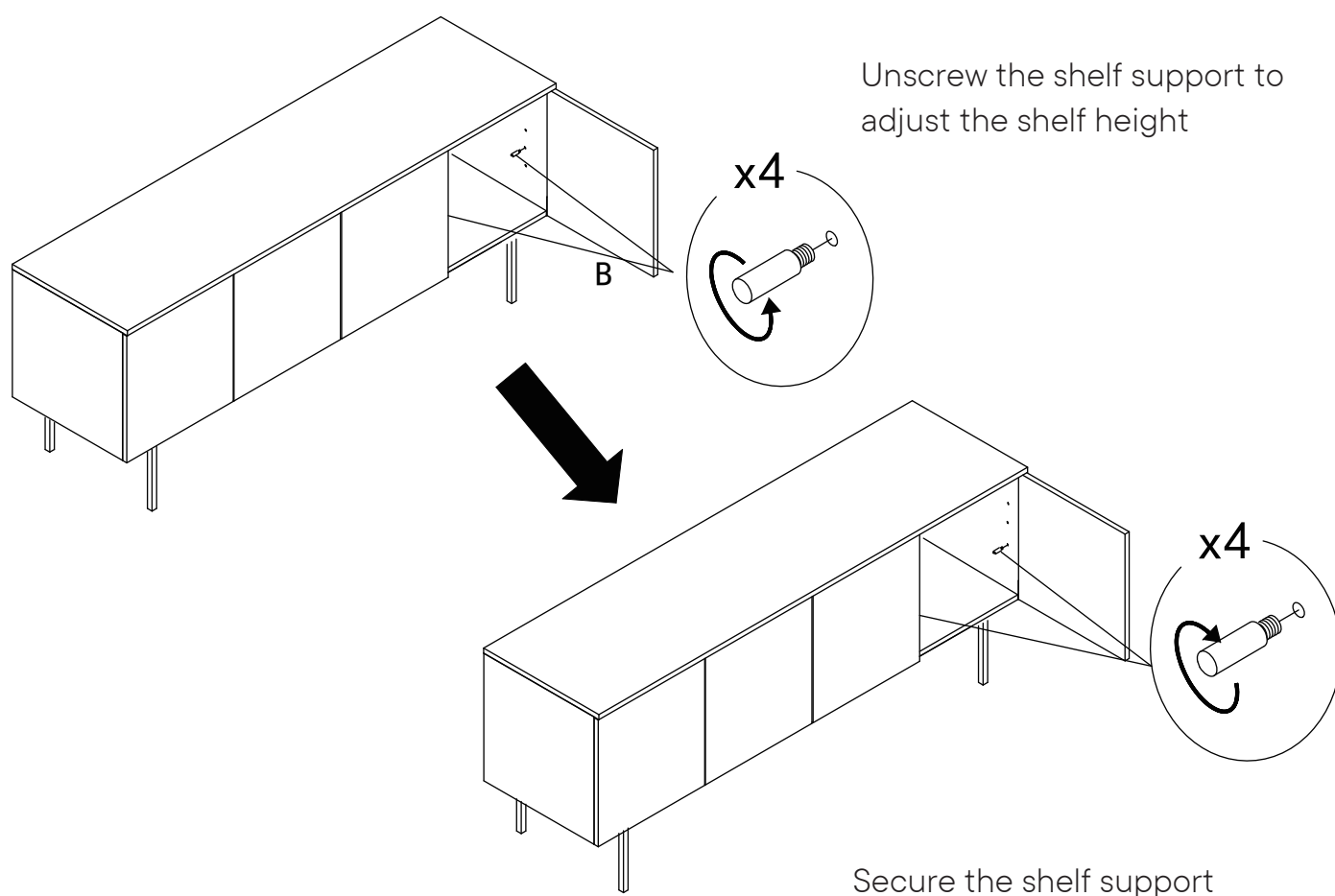
Back view



## Guide to adjust the shelf height



Open the door and pull out the shelf

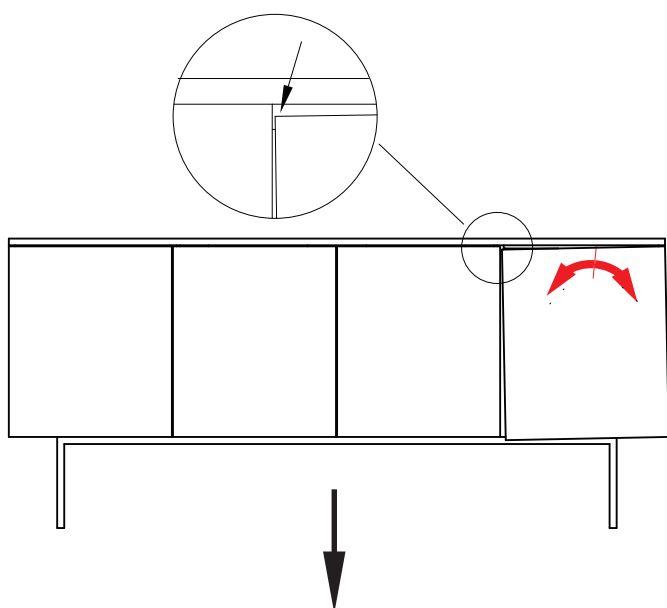


## Guide to hinges adjustment facilities

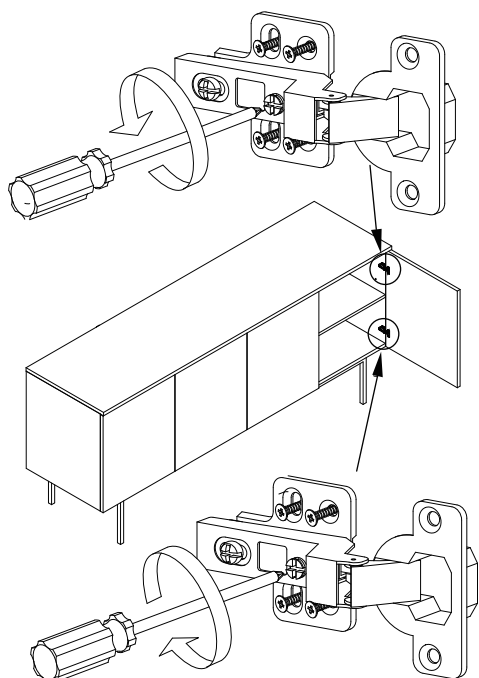
Warning : To ensure all hinges continue to work smoothly,  
pls check them regularly and adjust them necessary.

### Question 1

How to adjust the two door are not aligned and lower with screw adjustment?



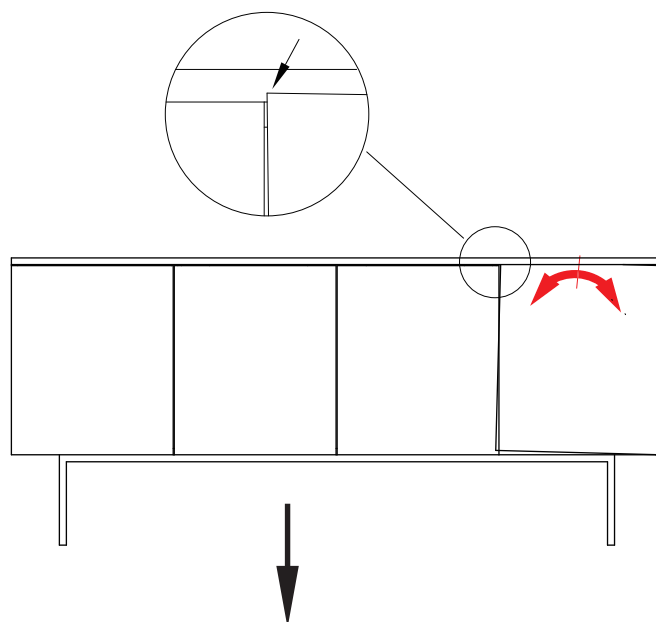
Turn left middle bolt adjuster properly  
until door is balanced



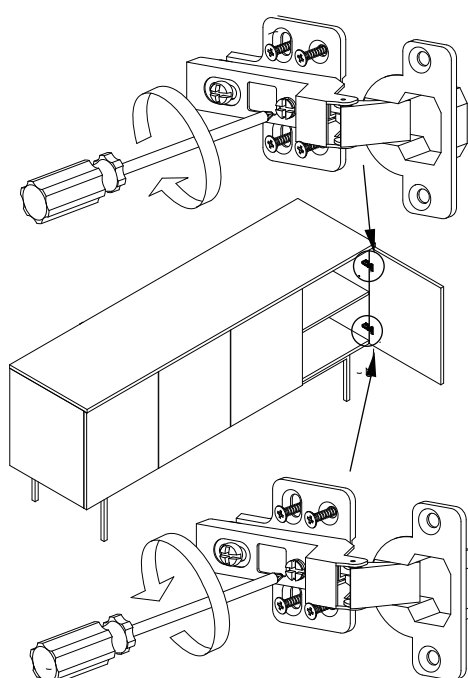
Turn right middle bolt adjuster properly  
until door is balanced

### Question 2

How to adjust the two door are not aligned and higher with screw adjustment?



Turn right middle bolt adjuster properly  
until door is balanced



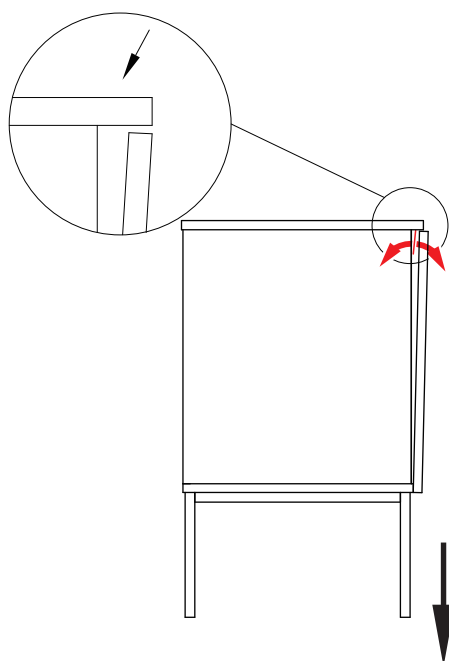
Turn left middle bolt adjuster properly  
until door is balanced

## Guide to hinges adjustment facilities

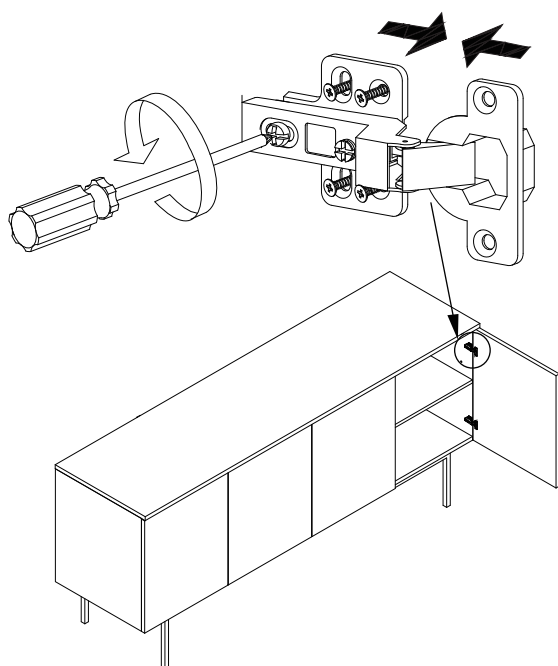
Warning : To ensure all hinges continue to work smoothly,  
pls check them regularly and adjust them necessary.

### Question 3

How to adjust the door gap at side with screw adjustment?

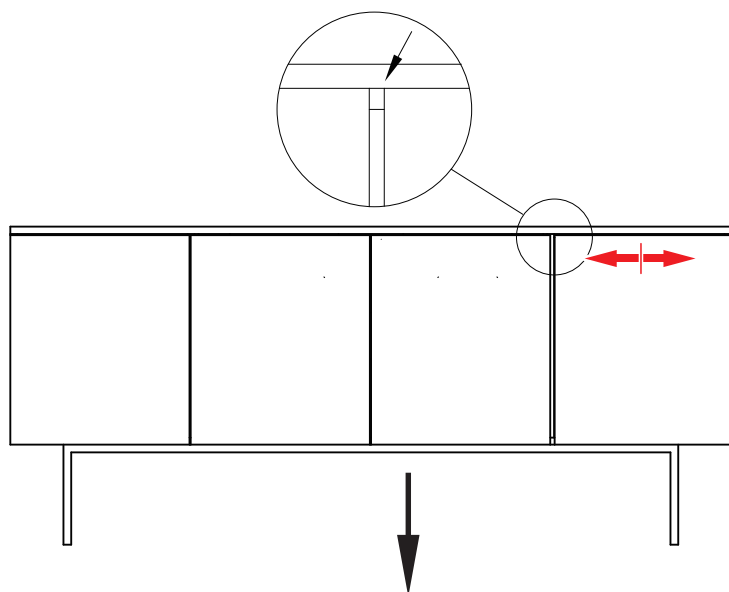


Turn left the adjuster properly  
until door is balanced

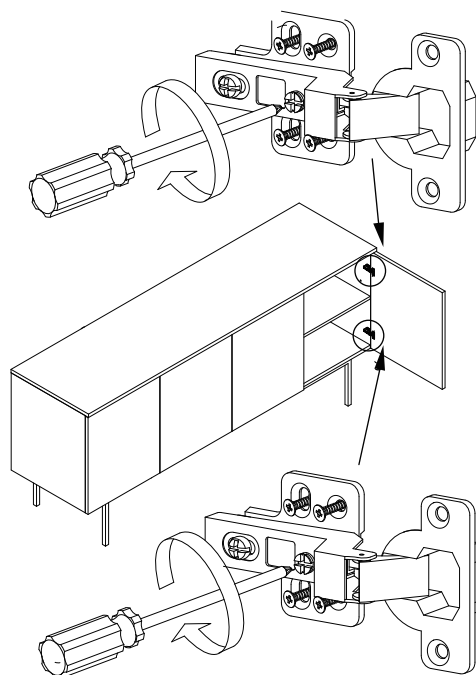


### Question 4

How to adjust the door gap at front with screw adjustment?



Turn right middle bolt adjuster properly  
until door is balanced



Turn right middle bolt adjuster properly  
until door is balanced

# Great job!

TV stand assembly is complete

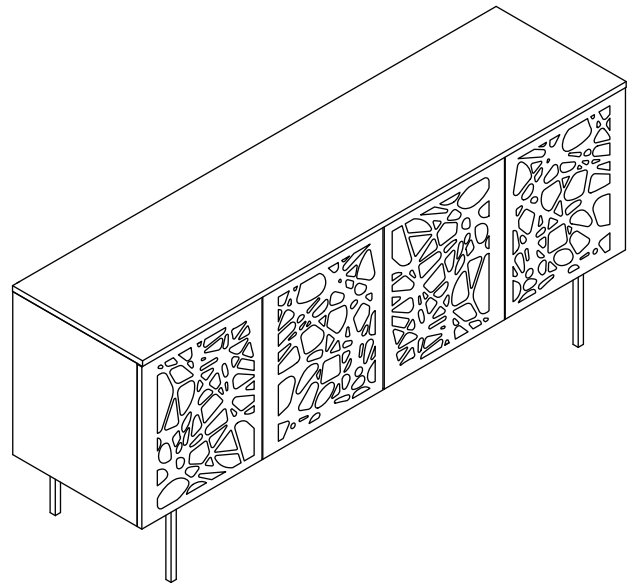
## ♥ CARING FOR YOUR ITEM

Indoor use only.

Not contract grade.

Clean using a non-abrasive cloth and a mild cleaner.

Never use harsh chemicals, as they could damage the finish or integrity of the item.



## CONNECT WITH US!

Tag us **@modway\_furniture** and **#modway** for a chance to be featured.