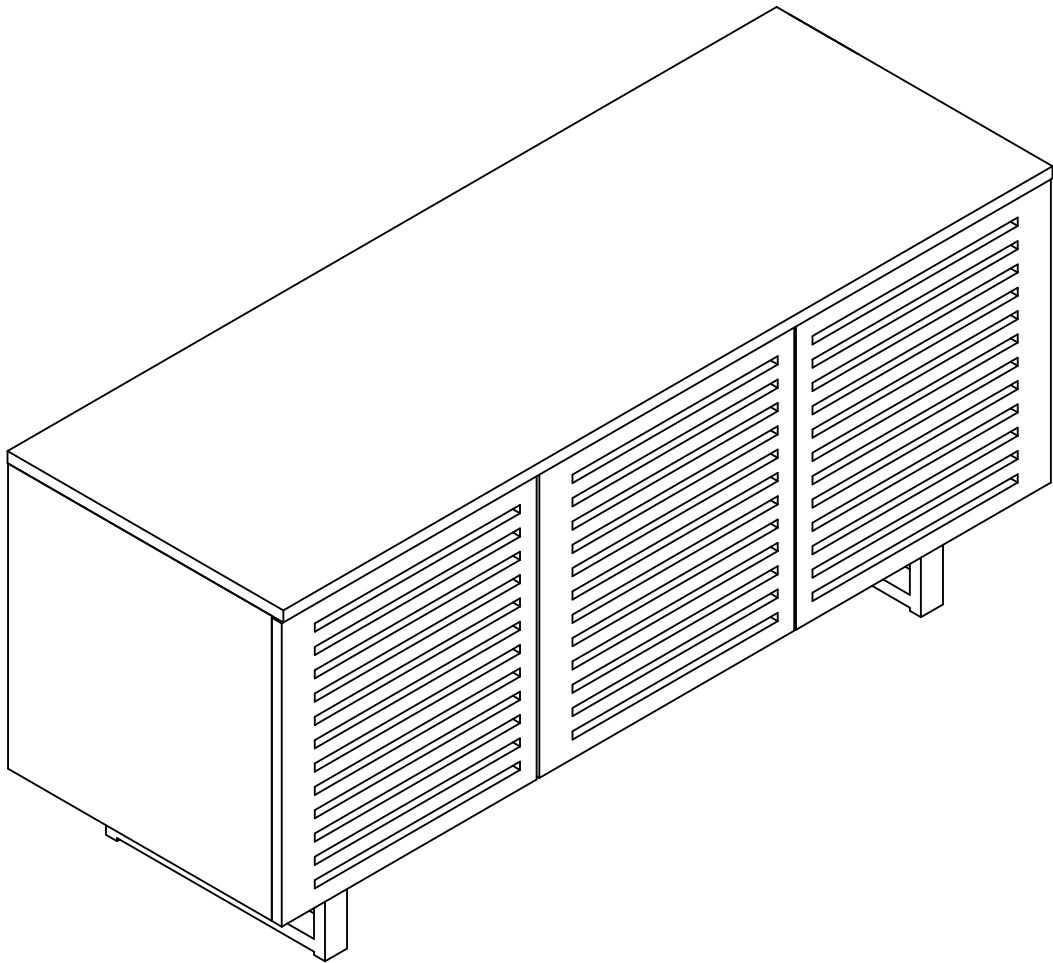


# ASSEMBLY INSTRUCTIONS

# EEI-4764

V1.05.07.22



## Questions? Contact us!

609.256.9000 • [cs@modway.com](mailto:cs@modway.com)  
[www.modway.com](http://www.modway.com)

**\*modway**

# Let's get started!

\*modway



Read through all of the instructions before starting



Approx. 60 minutes assembly time



2 people recommended for assembly



Care instructions are listed in the last step of this manual



Make sure you have all parts and components before discarding any packing materials

**Only use hand tools to assemble this item.** Do not use power tools. Do not tighten bolts or screws completely until all hardware is lined up and inserted into the holes.

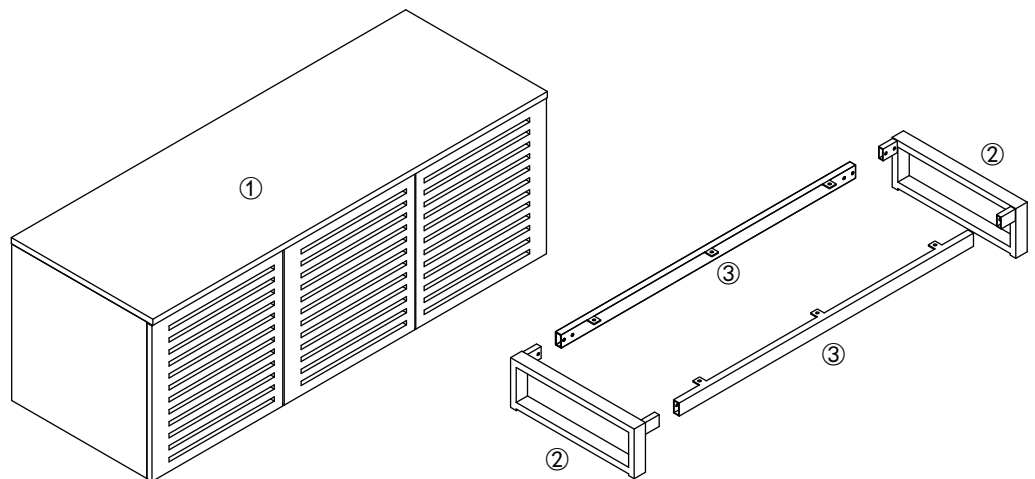
Do not over-tighten screws and bolts to avoid stripping the hardware or cracking the item.

Assemble your item on a flat, carpeted area, with plenty of space to work. This will prevent damage and scratches to your floors or the item while you're assembling the product.

Keep all components and packaging out of reach of children or animals to avoid risk of choking or suffocation.

## Furniture components:

1	TV Stand Body	x1
2	Leg	x2
3	Apron	x2



## Provided hardware:

A		Anti Tipping 150x28x3mm	x2
B		Bolt M6 x 15mm	x14
C		Flat Washer M6 x 16mm	x6
D		Allen Key M4	x1
E		Push to Open Latch	x3
F		Wall Anchor	x2

Wait!

Missing parts or hardware? Need assistance?  
Contact us before returning your item. We're here to help!  
609.256.9000 • [cs@modway.com](mailto:cs@modway.com)

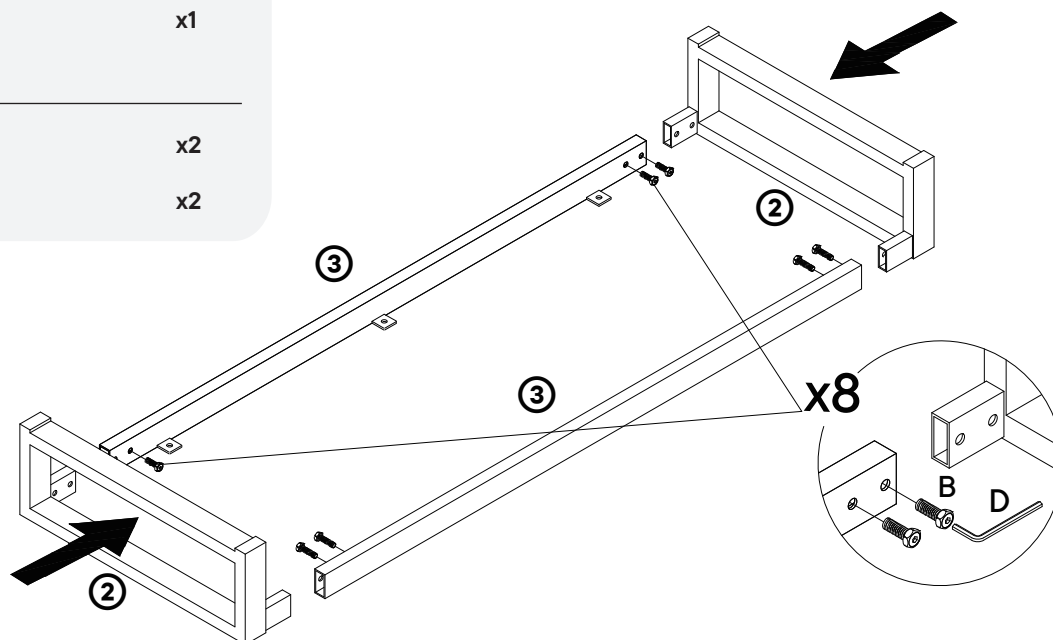
# Step 1

## HARDWARE

- |          |                |    |
|----------|----------------|----|
| <b>B</b> | Bolt M6 x 15mm | x8 |
| <b>D</b> | Allen Key M4   | x1 |

## COMPONENTS

- |          |       |    |
|----------|-------|----|
| <b>2</b> | Leg   | x2 |
| <b>3</b> | Apron | x2 |



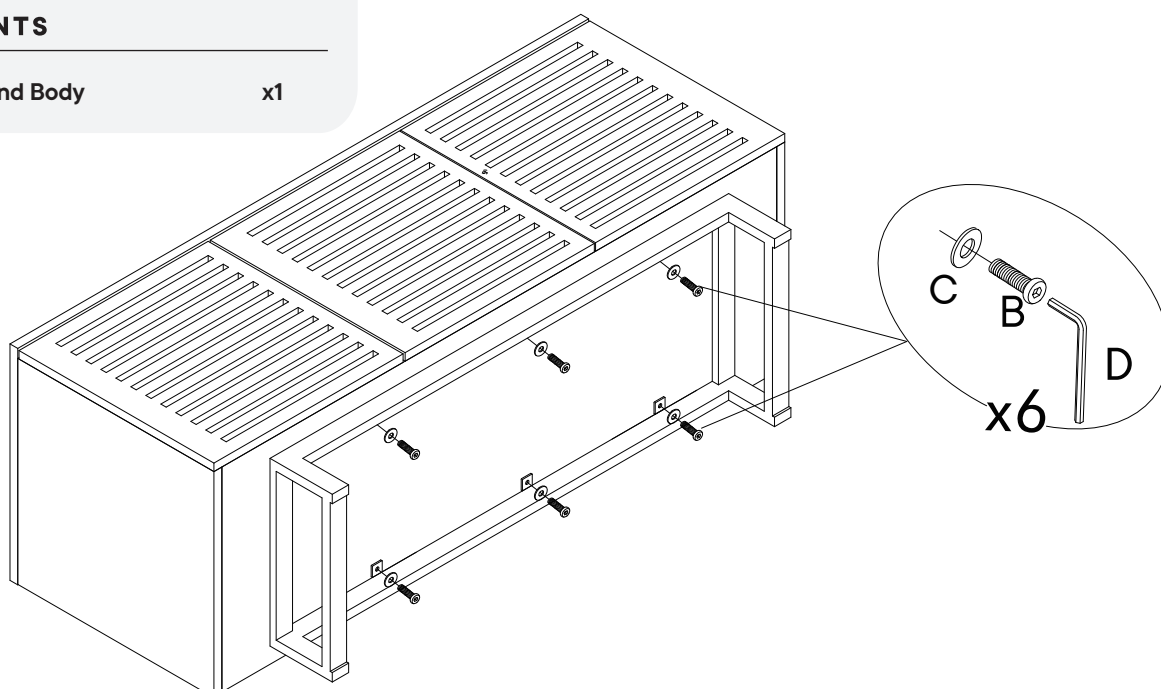
# Step 2

## HARDWARE

- |          |                       |    |
|----------|-----------------------|----|
| <b>B</b> | Bolt M6 x 15mm        | x6 |
| <b>C</b> | Flat Washer M6 x 16mm | x6 |
| <b>D</b> | Allen Key M4          | x1 |

## COMPONENTS

- |          |               |    |
|----------|---------------|----|
| <b>1</b> | TV Stand Body | x1 |
|----------|---------------|----|



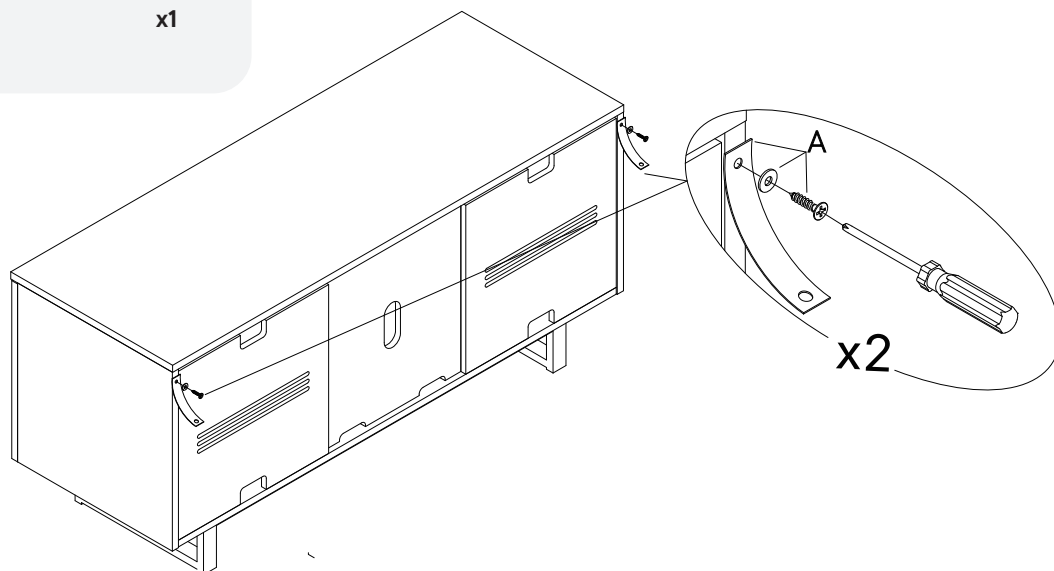
## Step 3

### HARDWARE

**A** Anti Tipping 150x28x3mm x2

### COMPONENTS

**1** TV Stand Body x1



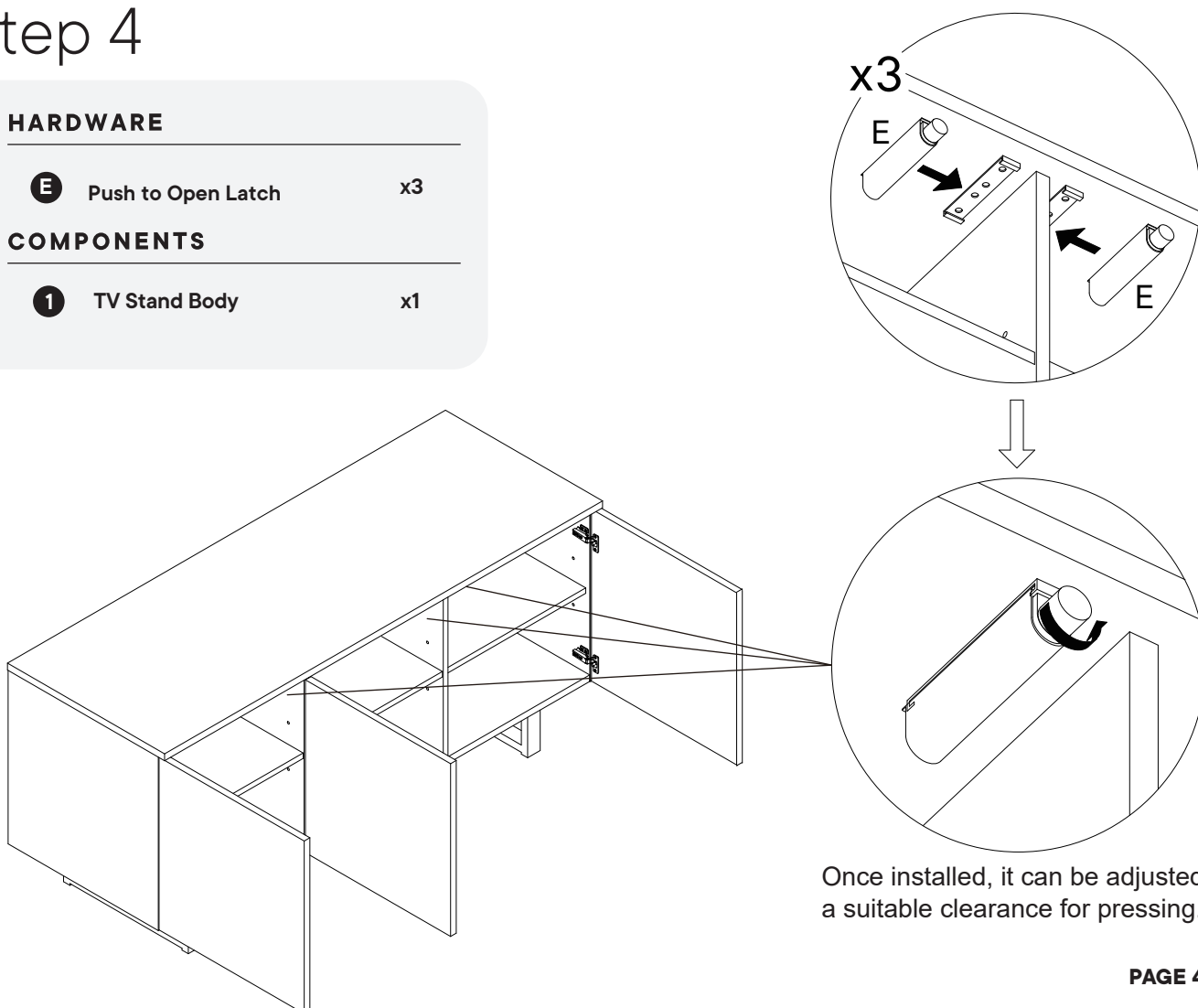
## Step 4

### HARDWARE

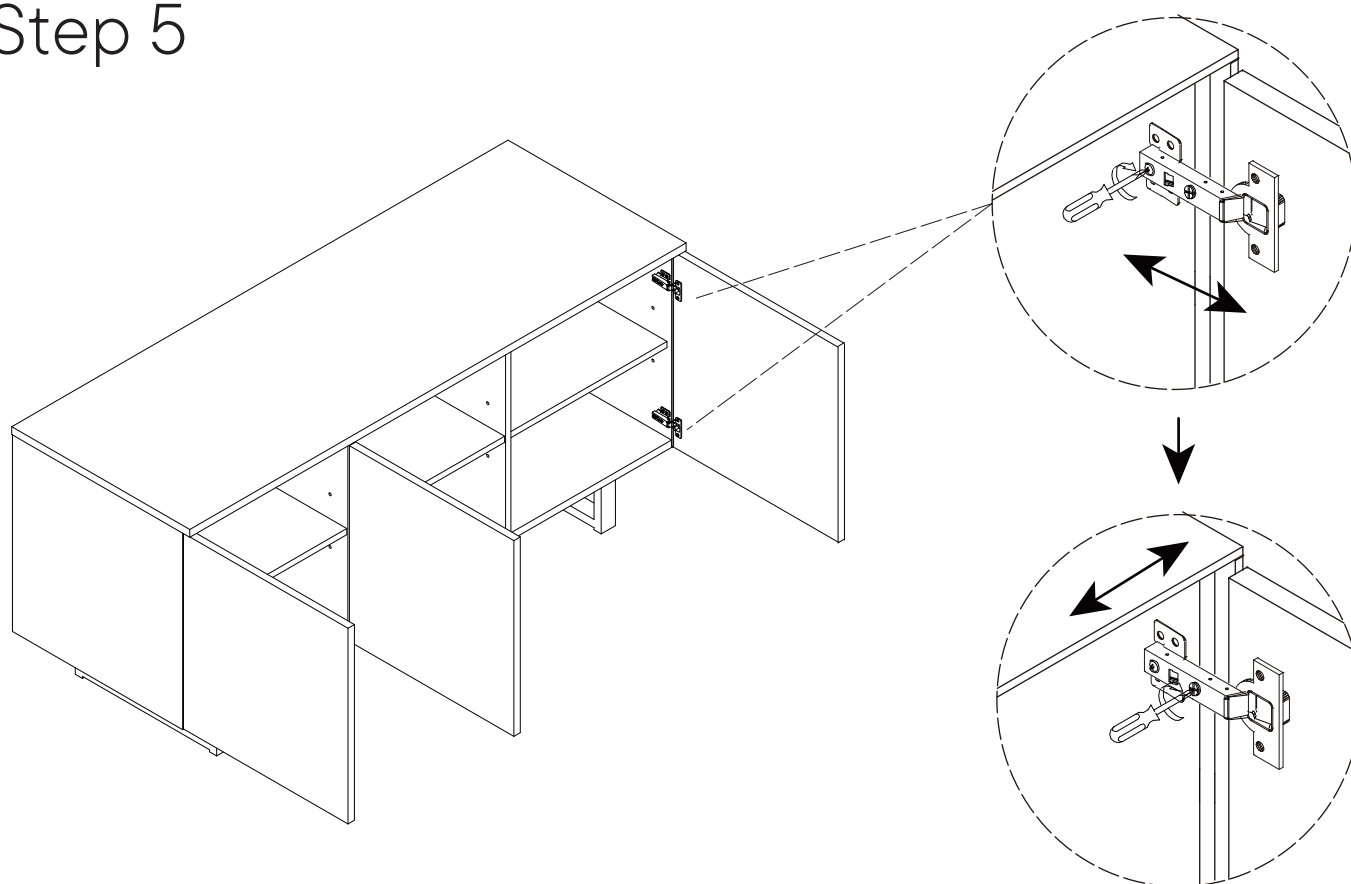
**E** Push to Open Latch x3

### COMPONENTS

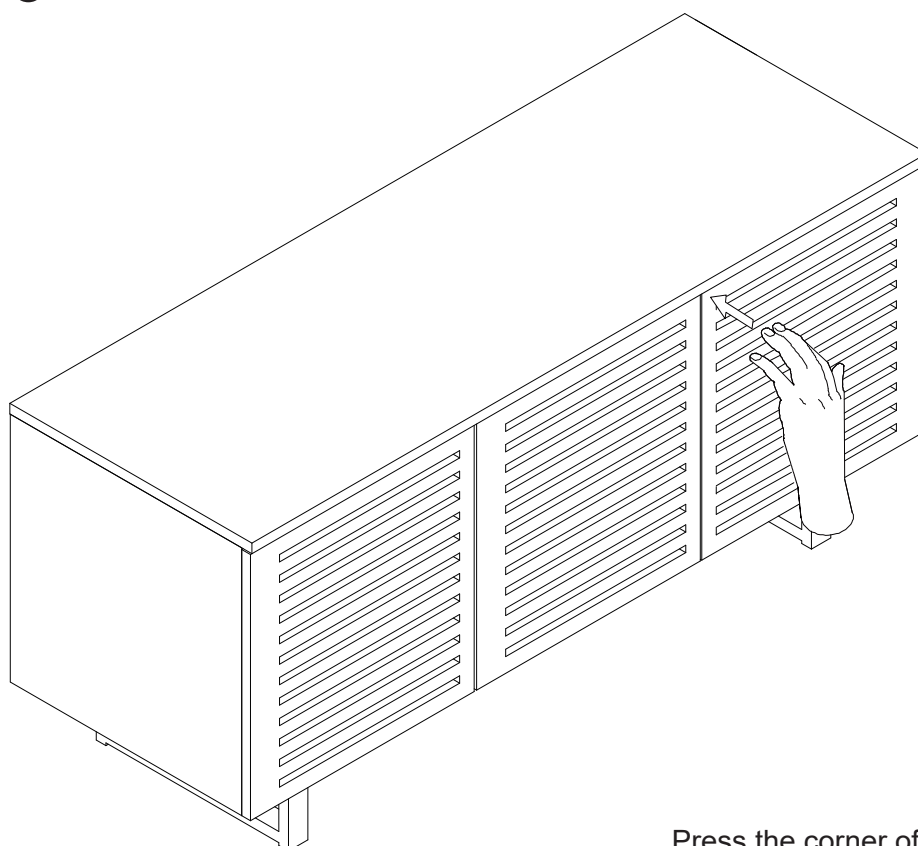
**1** TV Stand Body x1



## Step 5



## Step 6



Press the corner of door to open

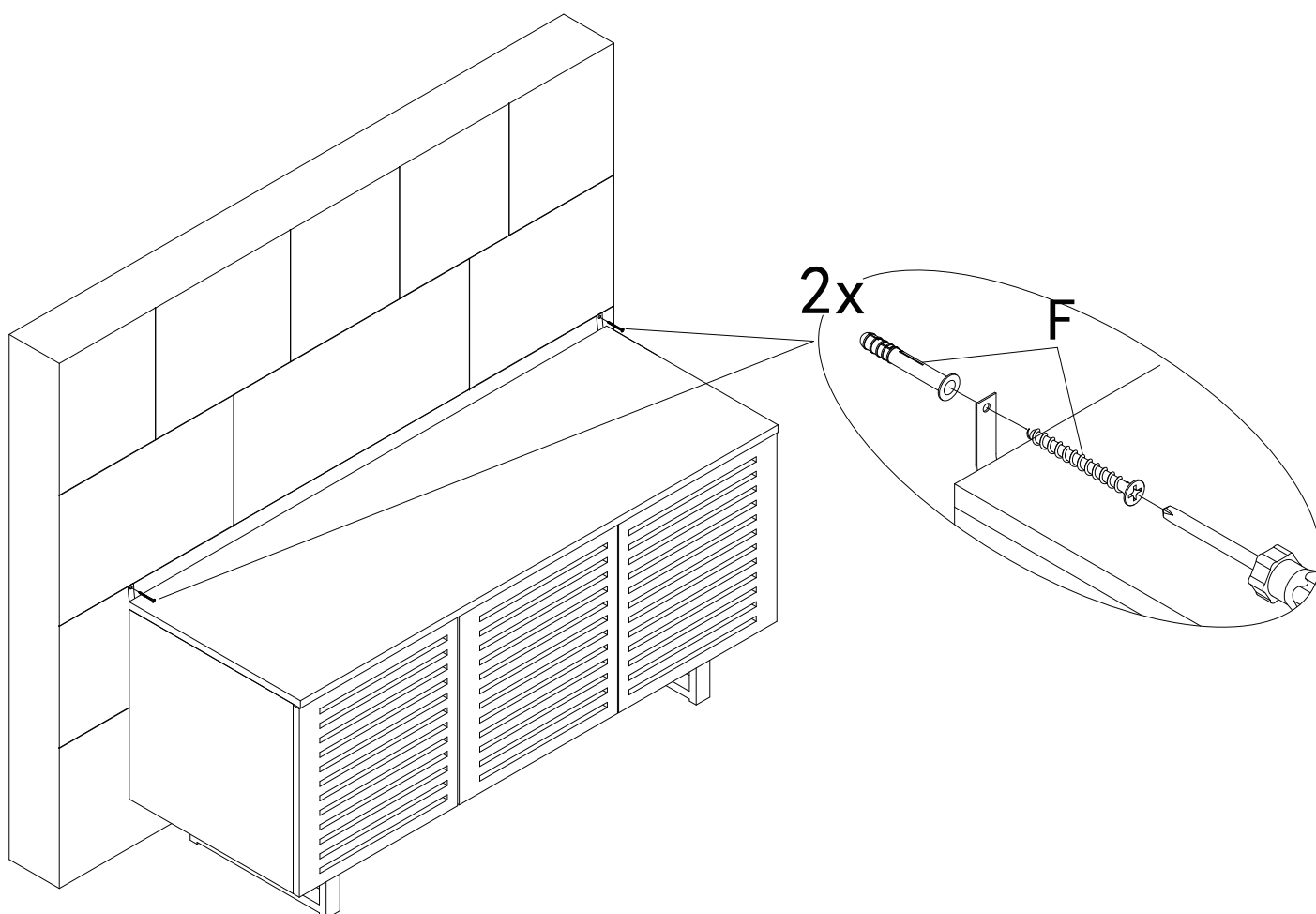
# Step 7

## HARDWARE

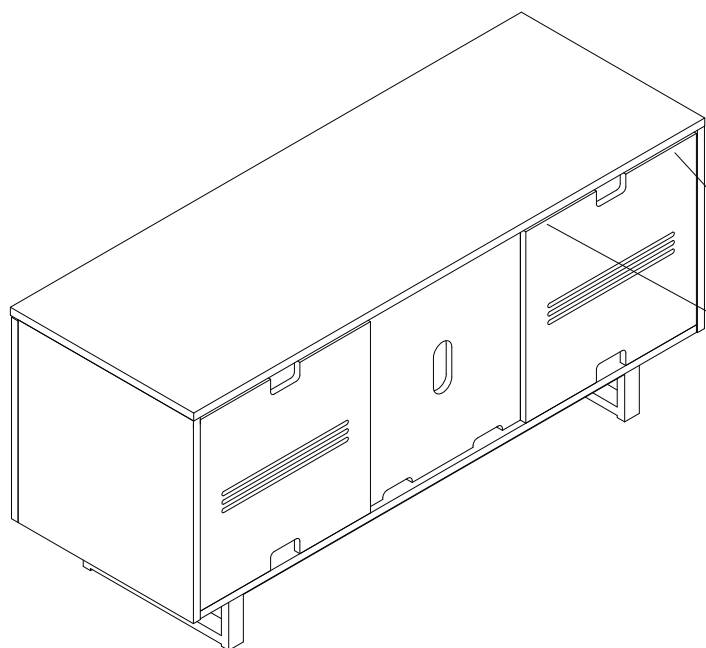
**F** Wall Anchor x2

## COMPONENTS

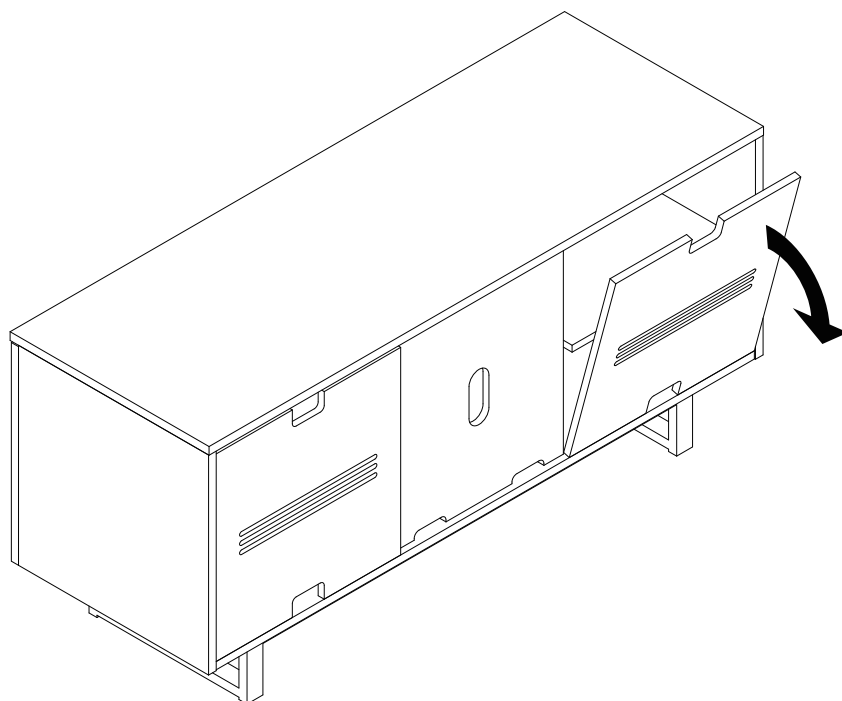
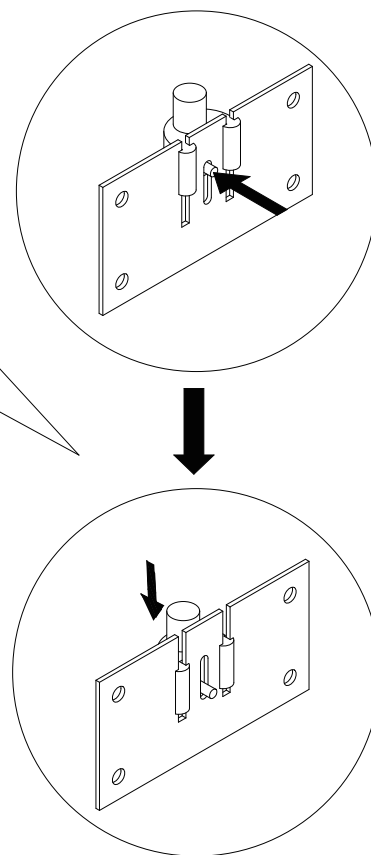
**1** TV Stand Body x1



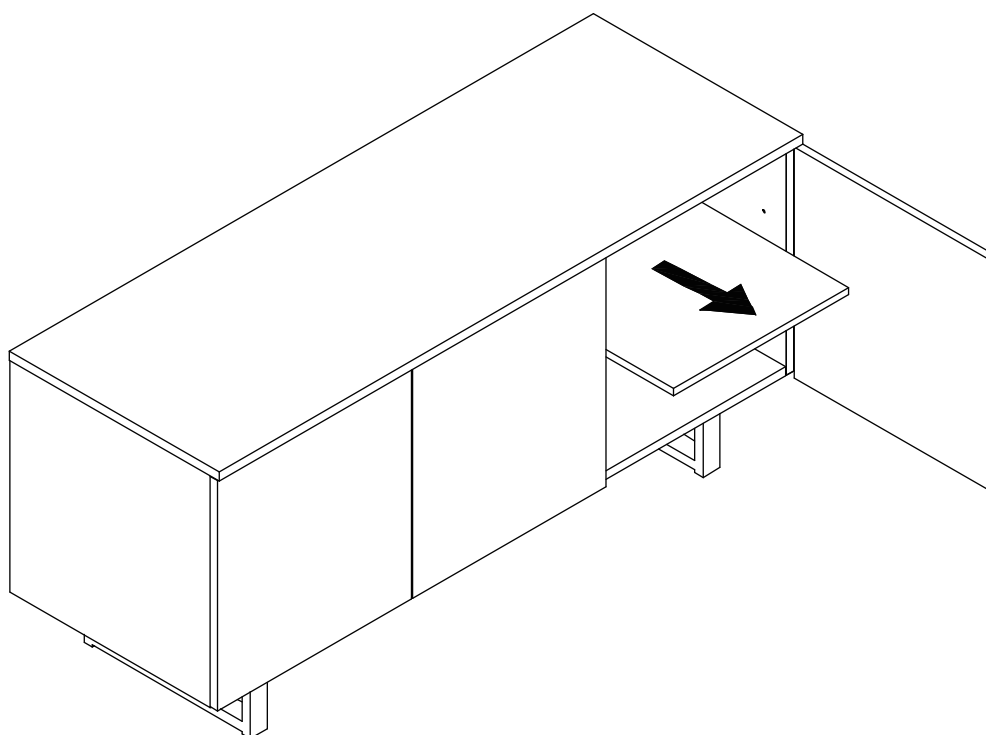
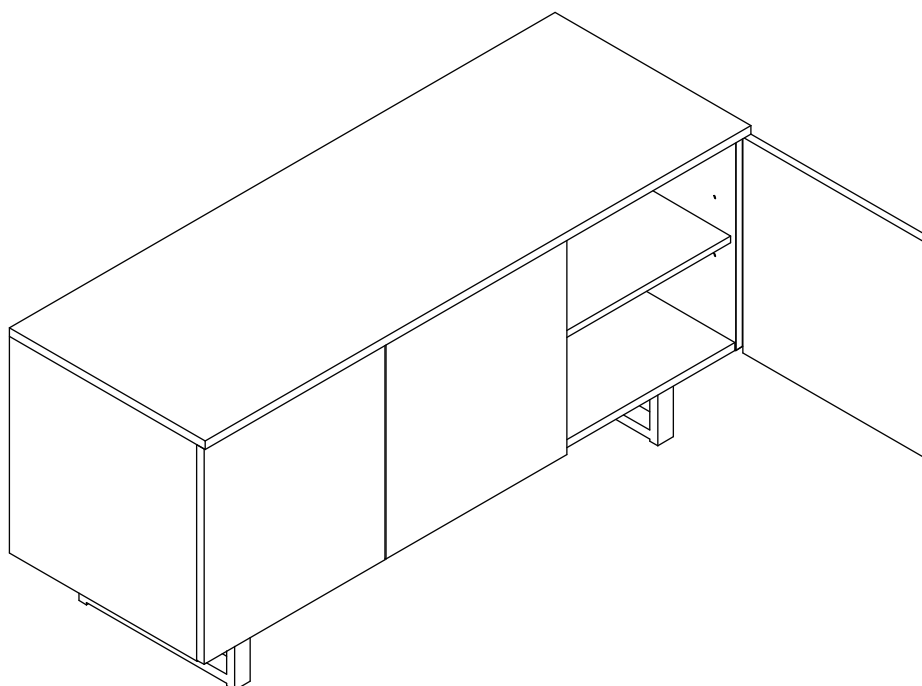
## Guide to dismantle the back panel



Back view

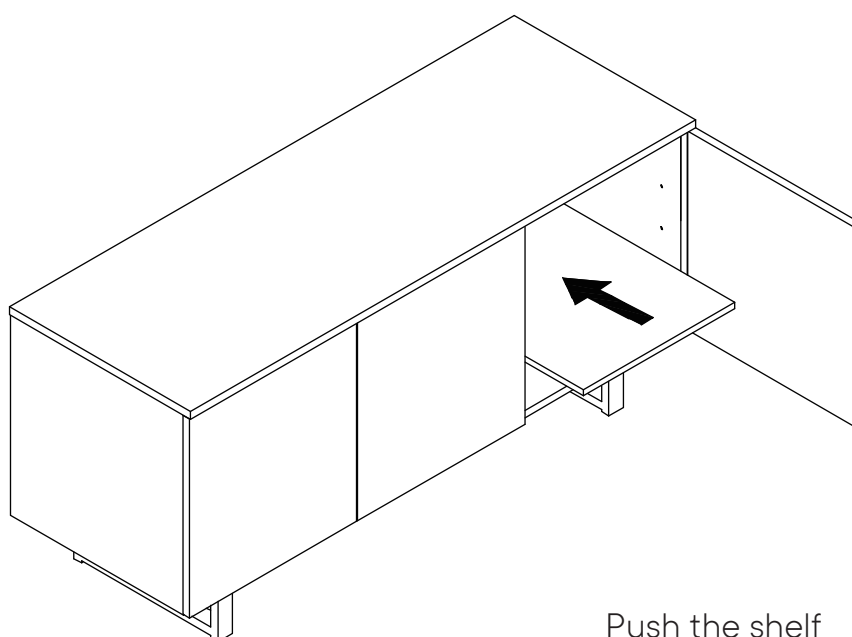
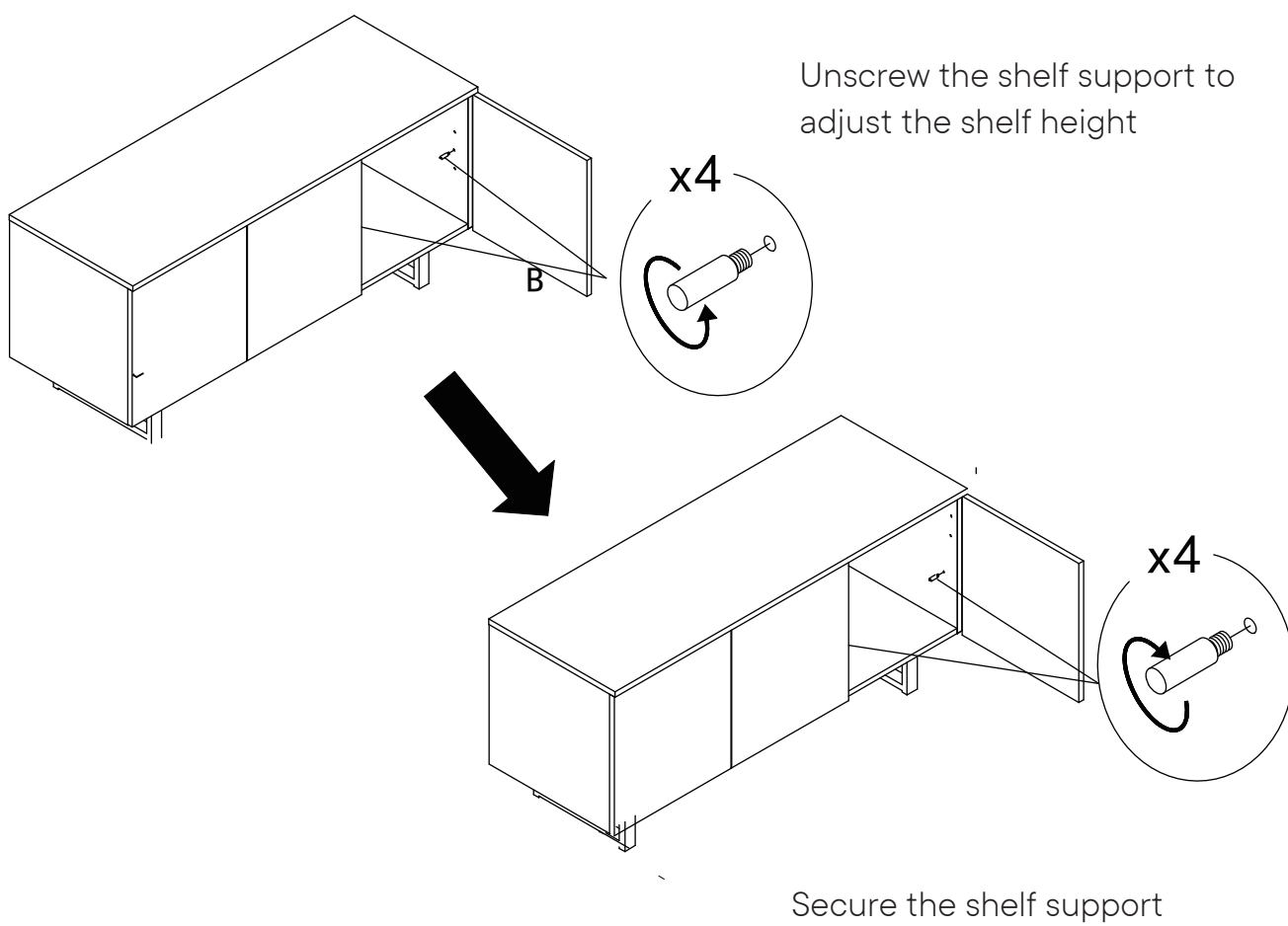


## Guide to adjust the shelf height



Open the door and pull out the shelf





# Great job!

TV stand assembly is complete

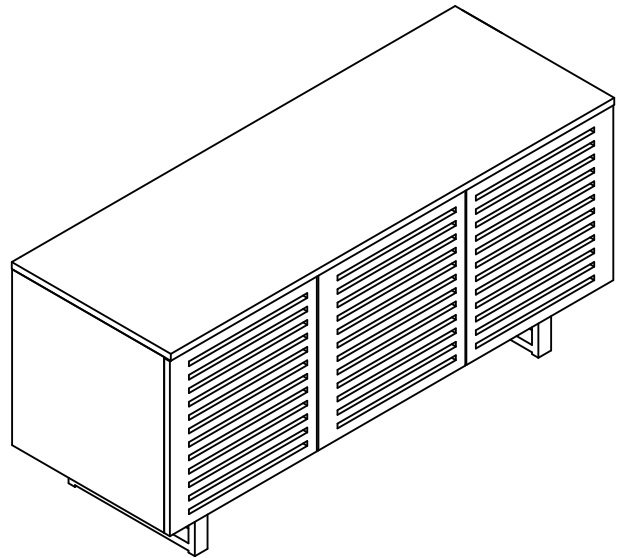
## ♥ CARING FOR YOUR ITEM

Indoor use only.

Not contract grade.

Clean using a non-abrasive cloth and a mild cleaner.

Never use harsh chemicals, as they could damage the finish or integrity of the item.



## CONNECT WITH US!

Tag us **@modway\_furniture** and **#modway** for a chance to be featured.