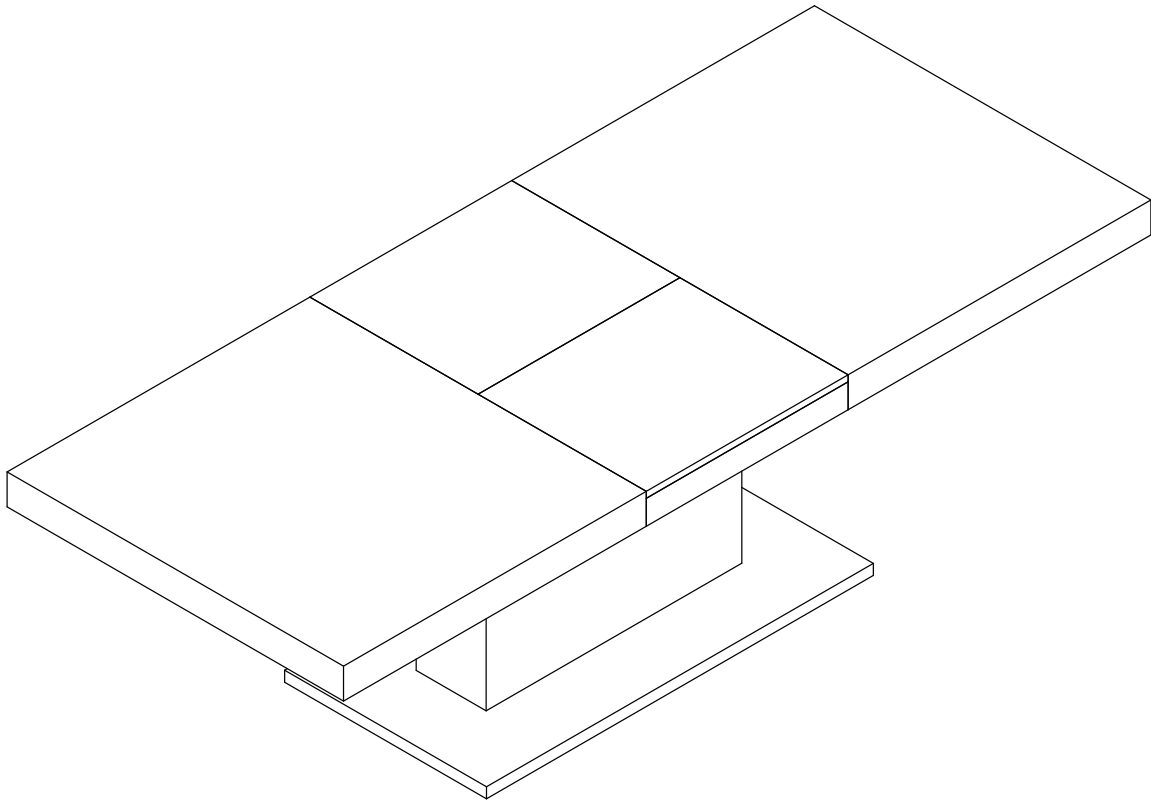


ASSEMBLY INSTRUCTIONS

EEI-4660

V1.12.20.21



Questions? Contact us!

609.256.9000 • cs@modway.com
www.modway.com

***modway**

Let's get started!

*modway



Read through all of the instructions before starting



Approx. 60 minutes assembly time



2 people recommended for assembly



Care instructions are listed in the last step of this manual



Make sure you have all parts and components before discarding any packing materials

Only use hand tools to assemble this item. Do not use power tools. Do not tighten bolts or screws completely until all hardware is lined up and inserted into the holes.

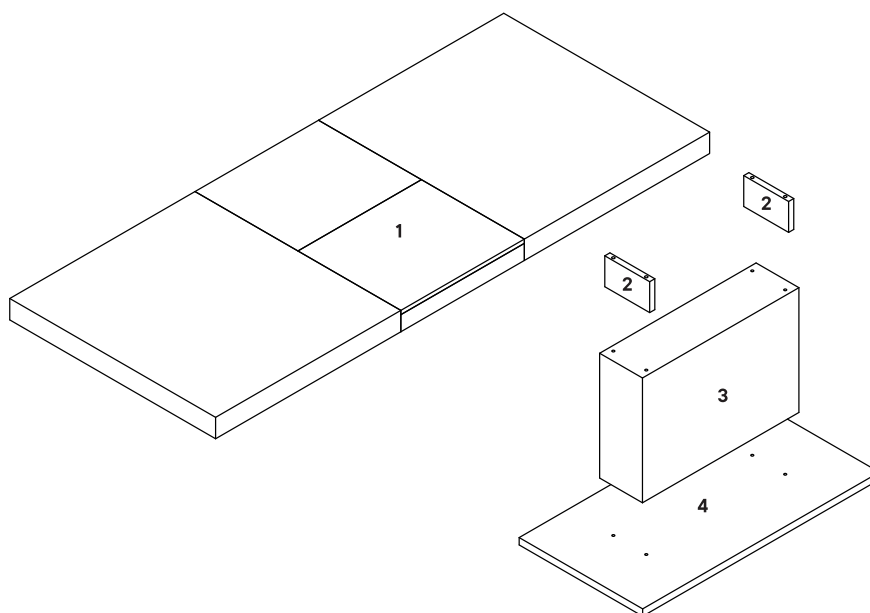
Do not over-tighten screws and bolts to avoid stripping the hardware or cracking the item.

Assemble your item on a flat, carpeted area, with plenty of space to work. This will prevent damage and scratches to your floors or the item while you're assembling the product.

Keep all components and packaging out of reach of children or animals to avoid risk of choking or suffocation.

Furniture components:

1	Table Top	x1
2	Connecting Plate	x2
3	Center Column	x1
4	Base	x1



Provided hardware:

A		Bolt M8 x 700mm	x4
B		Nut M8	x4
C		Flat Washer M8 x 30mm	x4
D		Socket Wrench M5	x1
E		Allen Key M5	x1
F		Bolt M6 x 15mm	x4
G		Support Iron	x2

Wait!

Missing parts or hardware? Need assistance?
Contact us before returning your item. We're here to help!
609.256.9000 • cs@modway.com

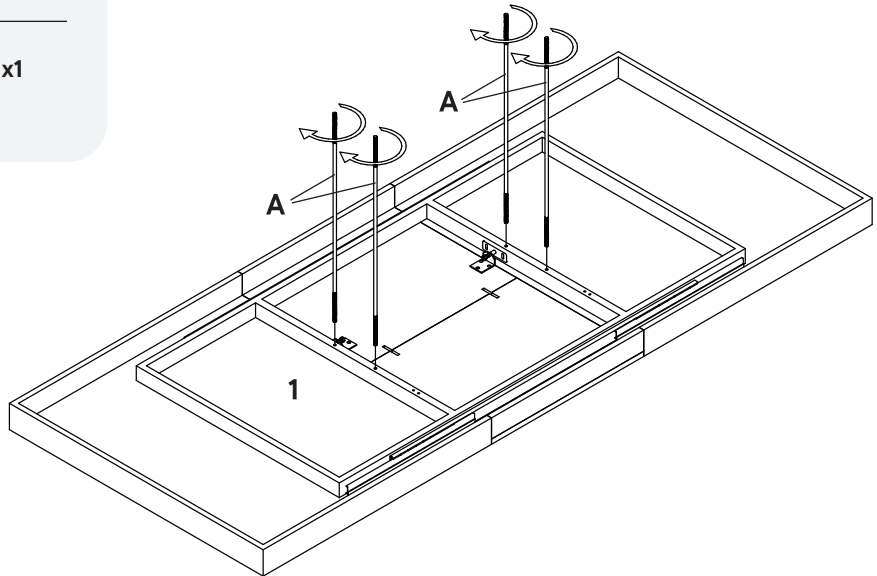
Step 1

HARDWARE

A Bolt M8 x 730mm x4

COMPONENTS

1 Table Top x1



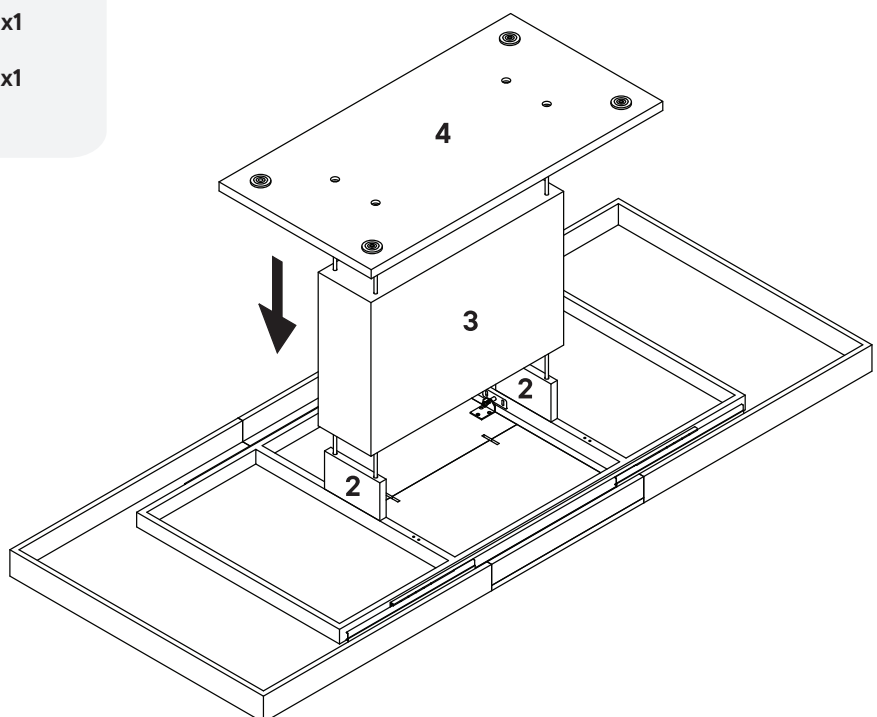
Step 2

COMPONENTS

2 Connecting Plate x2

3 Center Column x1

4 Base x1



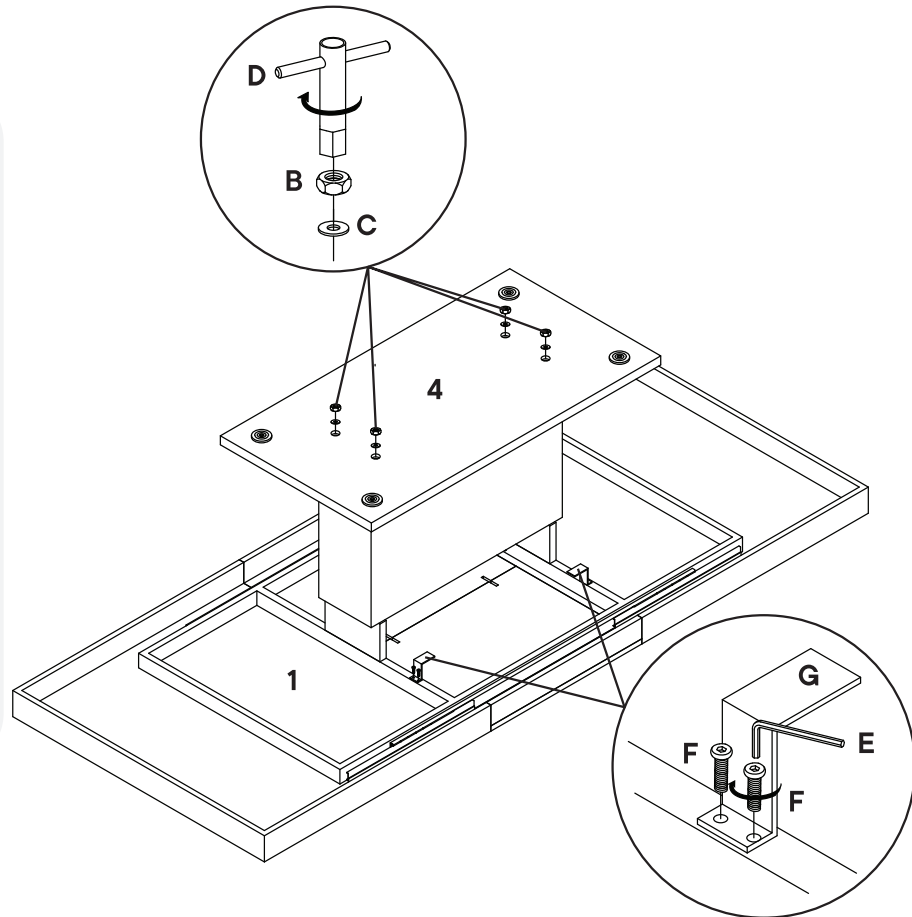
Step 3

HARDWARE

B	Nut M8	x4
C	Flat Washer M8 x 22mm	x4
D	Socket Wrench M5	x1
E	Allen Key M5	x1
F	Bolt M6 x 15mm	x4
G	Support Iron	x2

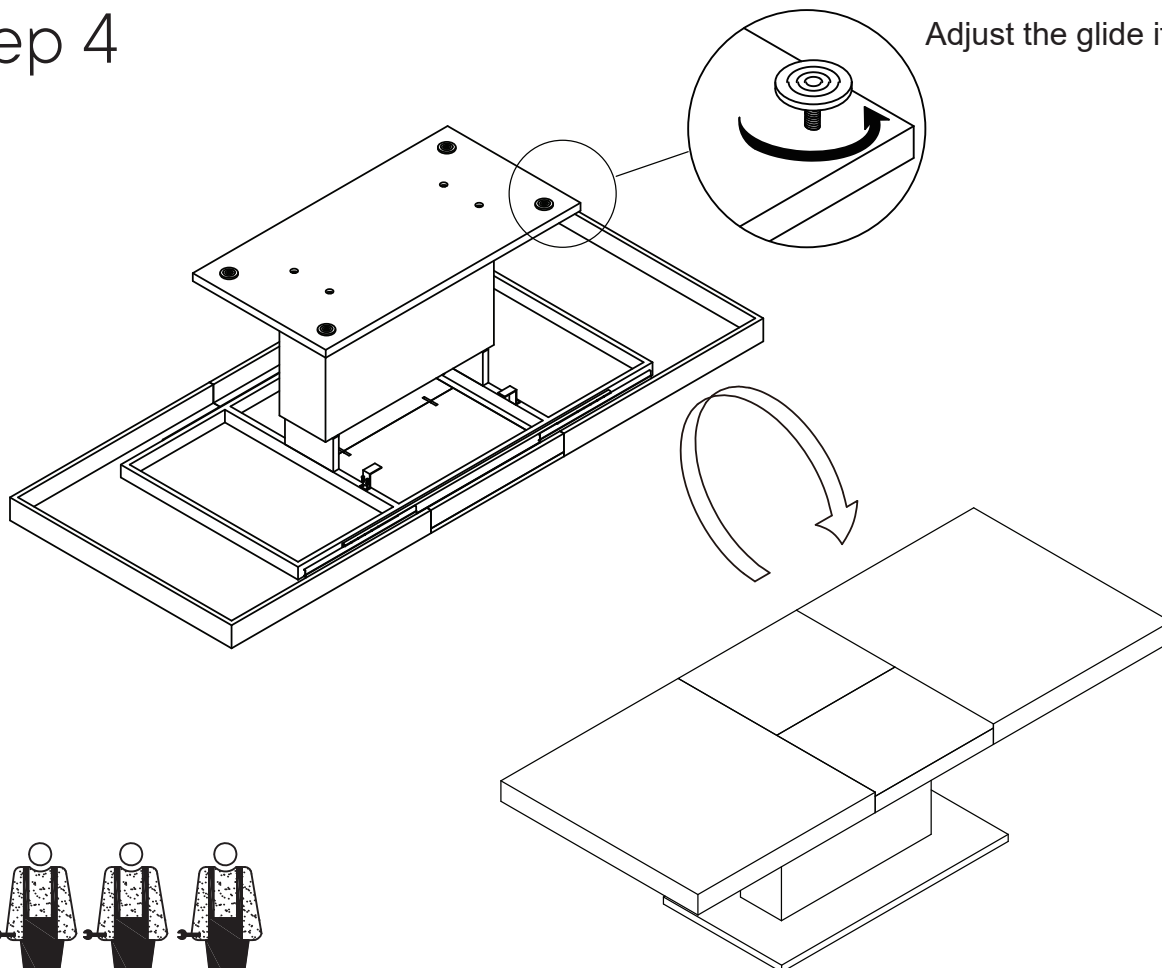
COMPONENTS

1	Table Top	x1
4	Base	x1



Step 4

Adjust the glide if not levelled



Great job!

Dining Table assembly is complete



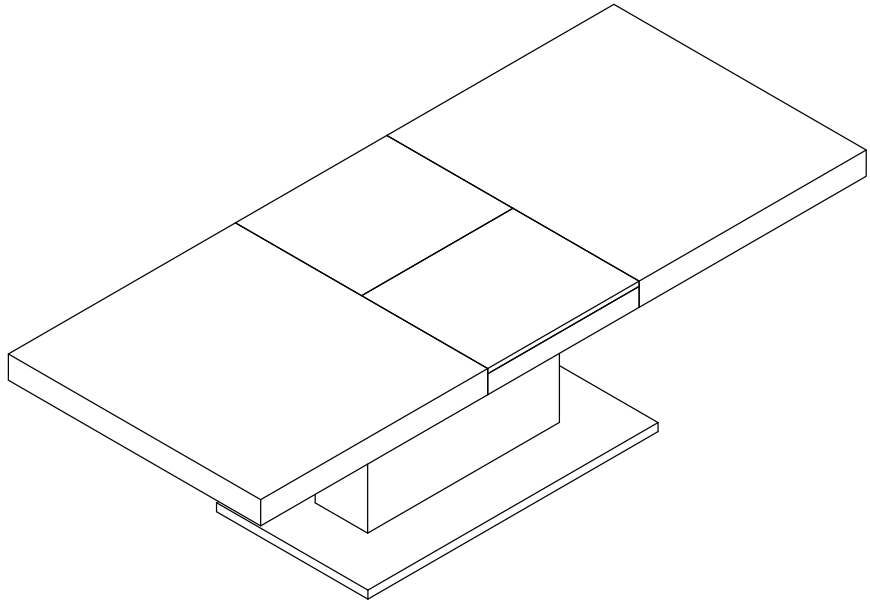
CARING FOR YOUR ITEM

Indoor use only.

Not contract grade.

Clean using a non-abrasive cloth and a mild cleaner.

Never use harsh chemicals, as they could damage the finish or integrity of the item.



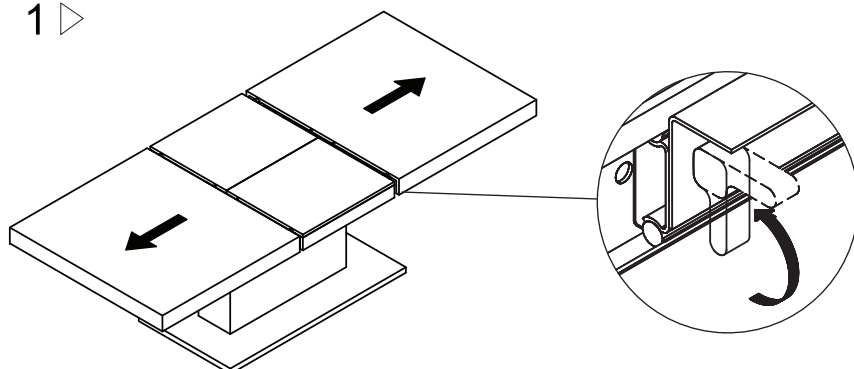
CONNECT WITH US!



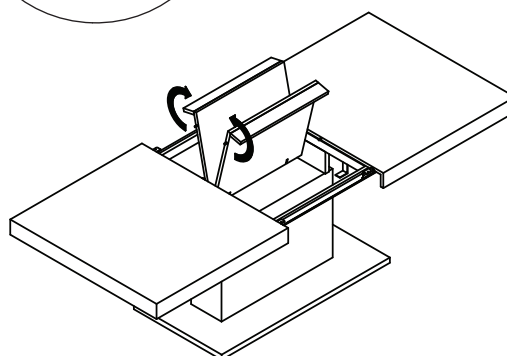
Tag us **@modway_furniture** and **#modway** for a chance to be featured.

Function Display

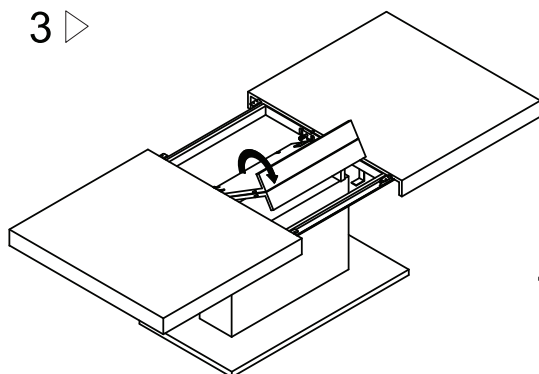
1 ▷



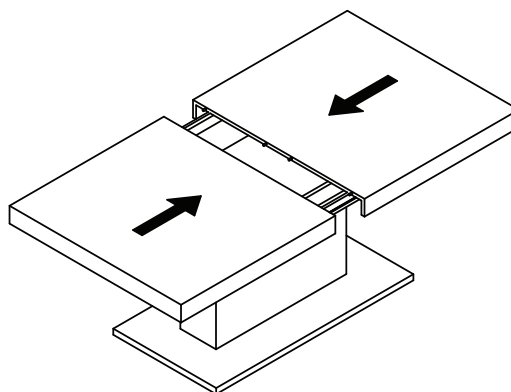
2 ▷



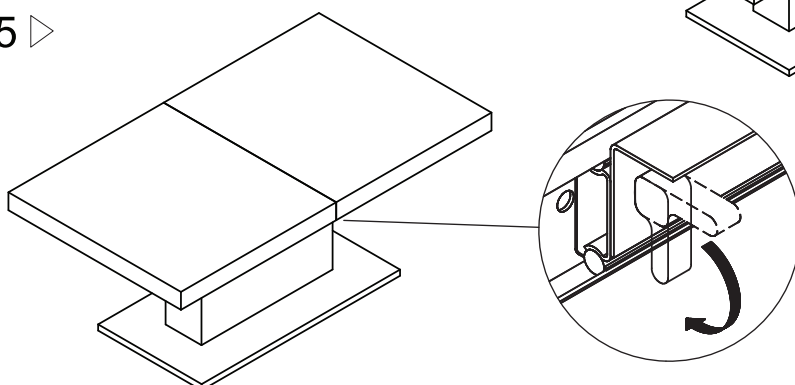
3 ▷



4 ▷



5 ▷



Before handling the leaves, please read the assembly instructions carefully.

When you pull out the two parts of the leaves, you must keep the two parts together.

when you put out the two parts of the leaves away again, it is important that the two parts remain together.

Please don't pull out or put away only one part at a time. Please handle with care to prevent damage