

Thank you for purchasing the **MODWAY Chair**.

Before you start, here are some helpful advice:

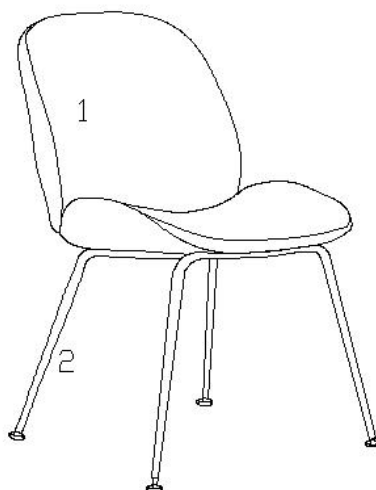
1. We suggest you spend a short time reading through this leaflet and then follow the simple step-by-step instructions.
2. Owing to the size and weight of the Chair, we recommend that it is assembled by two adults, on a carpeted or padded area, in the room that it is intended for. Approximate assembly time: 30 minutes.
3. Please do not use any tools other than those provided or recommended in these instructions.
4. Please do not throw away any of the packaging or the instruction until you have checked all the components and hardware and the furniture is fully assembled. Please ensure that the packaging is disposed of in a safe and environmentally friendly way.
5. Assemble all components loosely until advised to tighten. Depending on use, it may be necessary to tighten the components from time to time, so please save the tools that have been provided.
6. Please keep all pieces out of reach of children.



Hardware:

- | | | | |
|----|---|---------------|----|
| A. |  | Bolt M6*30mm | x4 |
| B. |  | Spring Washer | x4 |
| C. |  | Flat Washer | x4 |
| D. |  | Allen Wrench | x1 |

Components:

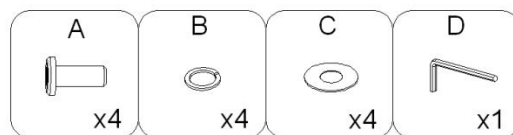
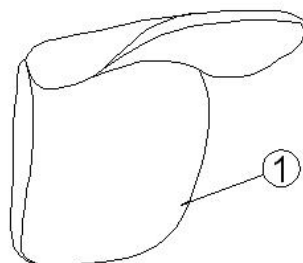
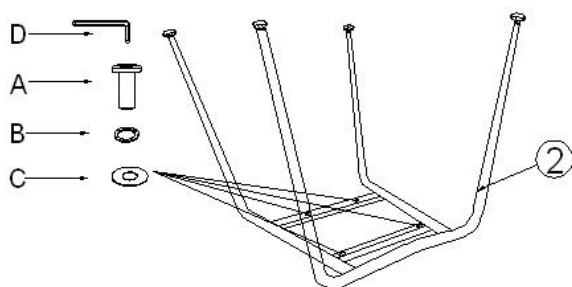


1. Chair Body x1

2. Base x1

STEP 1:

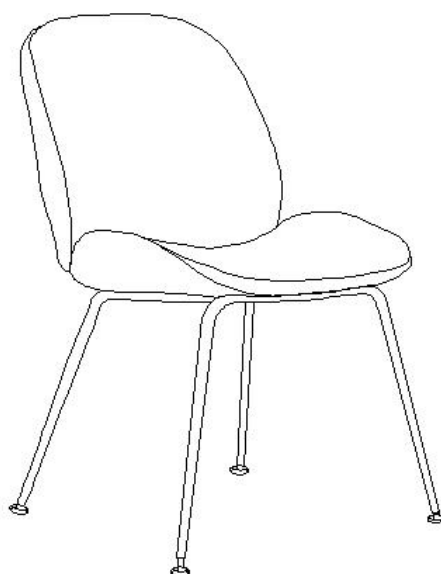
1. Take out the **Chair Body (1)**, **Base (2)** and hardware package from the carton.
2. Please put **Chair Body (1)** upside down on a carpeted or padded surface.
3. Adjust and match 4 holes at the bottom of the **Chair Body (1)** and **Base (2)**, then insert 1 piece of **Bolt (A)** with 1 piece of **Spring Washer (B)** & 1 piece of **Flat Washer (C)** into one of the matched holes in the bottom of the **Chair Body (1)** and **Base (2)** but don't fully tighten at this step. Repeat the same steps for other 3 holes.
4. Tighten all **Bolts (A)** by using **Allen Wrench (D)** fully.



Hardware & Tools Required

STEP 2:

Carefully turn over the assembled Chair.



Attention:
Please adjust chair level
by adjustable pin.



Assembly is complete. Your Chair is ready to enjoy now!