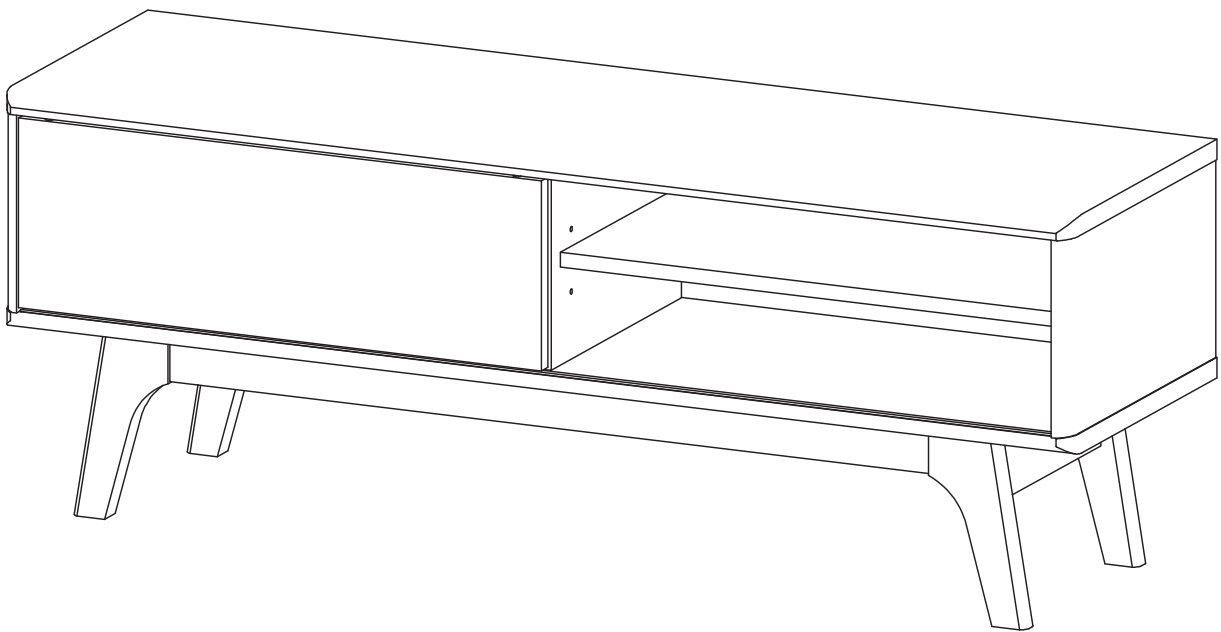


ASSEMBLY INSTRUCTIONS

EEI-2538

V4.02.22.22



Questions? Contact us!

609.256.9000 • cs@modway.com
www.modway.com

***modway**

Let's get started!

*modway



Read through all of the instructions before starting



Care instructions are listed in the last step of this manual



Approx. 60 minutes assembly time



Make sure you have all parts and components before discarding any packing materials



2 people recommended for assembly

Only use hand tools to assemble this item. Do not use power tools. Do not tighten bolts or screws completely until all hardware is lined up and inserted into the holes.

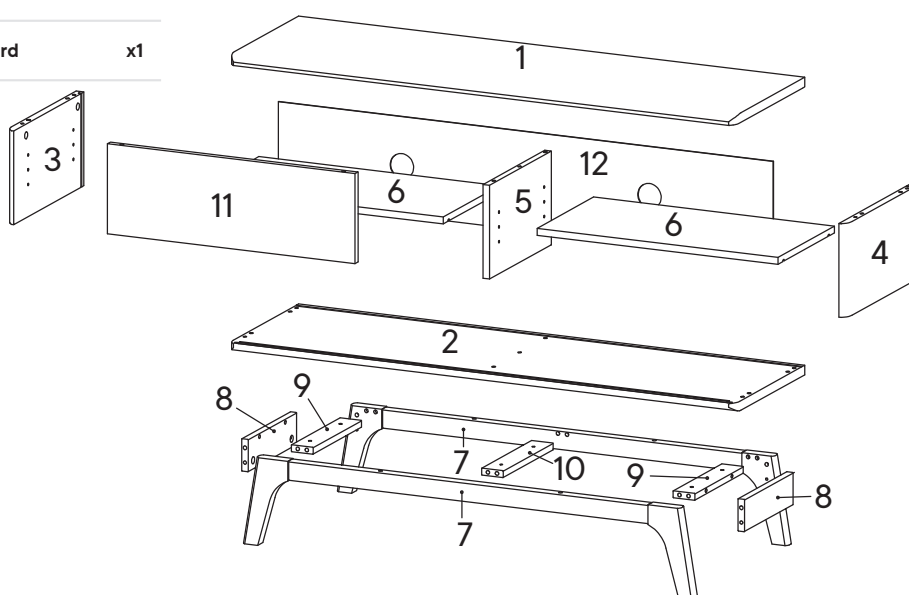
Do not over-tighten screws and bolts to avoid stripping the hardware or cracking the item.

Assemble your item on a flat, carpeted area, with plenty of space to work. This will prevent damage and scratches to your floors or the item while you're assembling the product.

Keep all components and packaging out of reach of children or animals to avoid risk of choking or suffocation.

Furniture components:

1	Top Board	x1	11	Wooden Door	x1
2	Bottom Board	x1	12	Back Board	x1
3	Side Board Left	x1			
4	Side Board Right	x1			
5	Center Board	x1			
6	Adjustable Shelf	x2			
7	Assembly Leg	x2			
8	Support Board 1	x2			
9	Support Board 2	x2			
10	Support Board 3	x1			



Provided hardware:

A		Cam Bolt Ø6 x 35 mm	x9	J		Wedge	x8
B		Cam Lock Ø15 mm	x9	K		Screw M 3.5 x 15.5 mm	x8
C		Wood Dowel Ø8 x 30 mm	x36	L		Floor Protector	x4
D		Screw M 7 x 50 mm	x5	M		Silicon Bumper	x2
E		Allen Key	x1	N		Screw Cap Ø15 mm	x4
F		Screw 5.5 x 35 mm	x6	O		Screw Cap Ø15 mm	x1
G		Shelf Pin	x8				
H		Pin Sliding Top	x2				
I		Pin Sliding Bottom	x2				

What you need:



Phillips



Phillips Head Screwdriver

Wait!

Missing parts or hardware? Need assistance?
Contact us before returning your item. We're here to help!
609.256.9000 • cs@modway.com

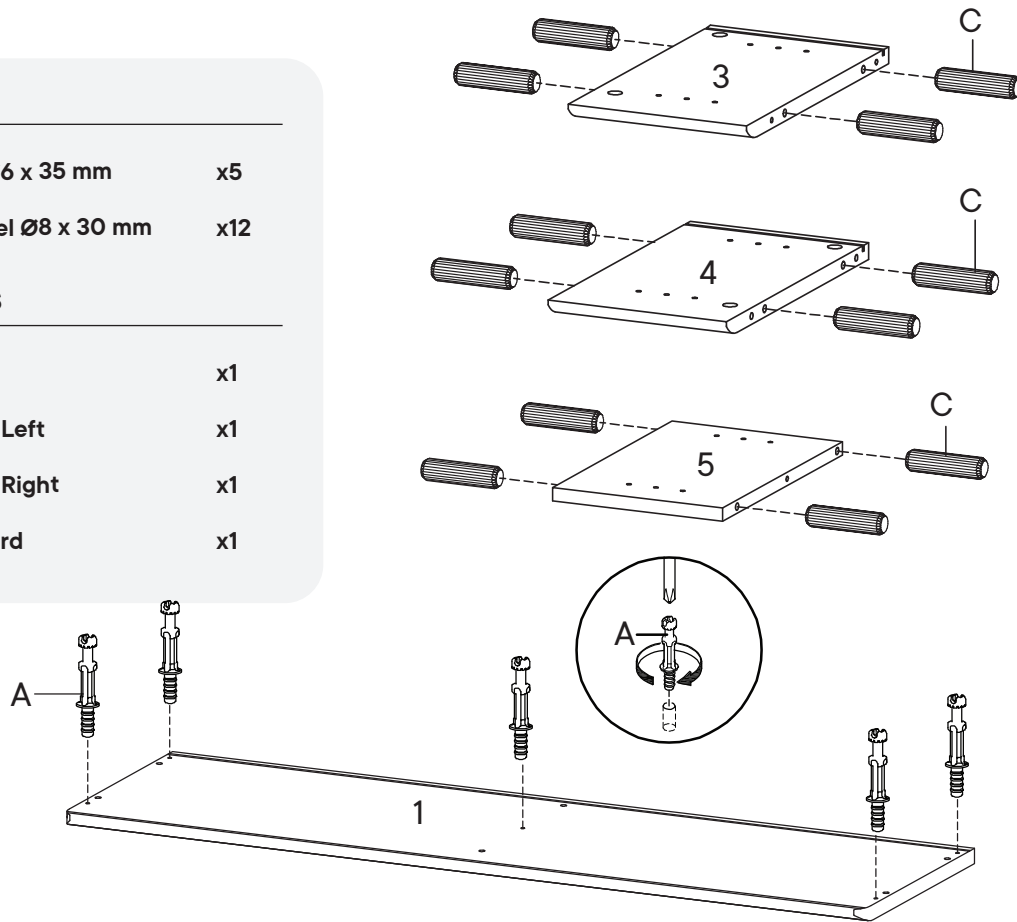
Step 1

HARDWARE

- A** Cam Bolt Ø6 x 35 mm x5
- C** Wood Dowel Ø8 x 30 mm x12

COMPONENTS

- 1** Top Board x1
- 3** Side Board Left x1
- 4** Side Board Right x1
- 5** Center Board x1



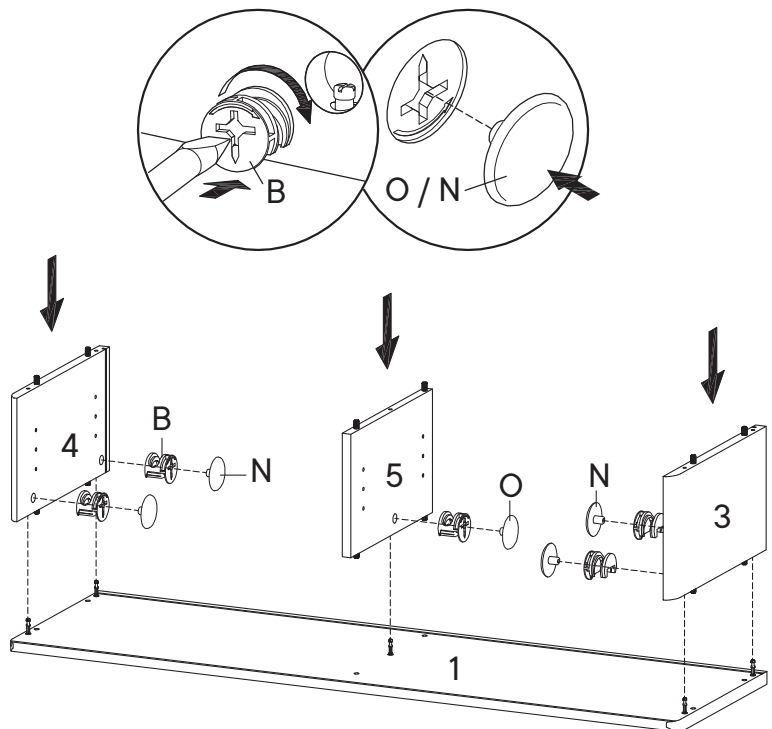
Step 2

HARDWARE

- B** Cam Lock Ø15 mm x5
- N** Screw Cap Ø15 mm x4
- O** Screw Cap Ø15 mm x1

COMPONENTS

- 1** Top Board x1
- 3** Side Board Left x1
- 4** Side Board Right x1
- 5** Center Board x1



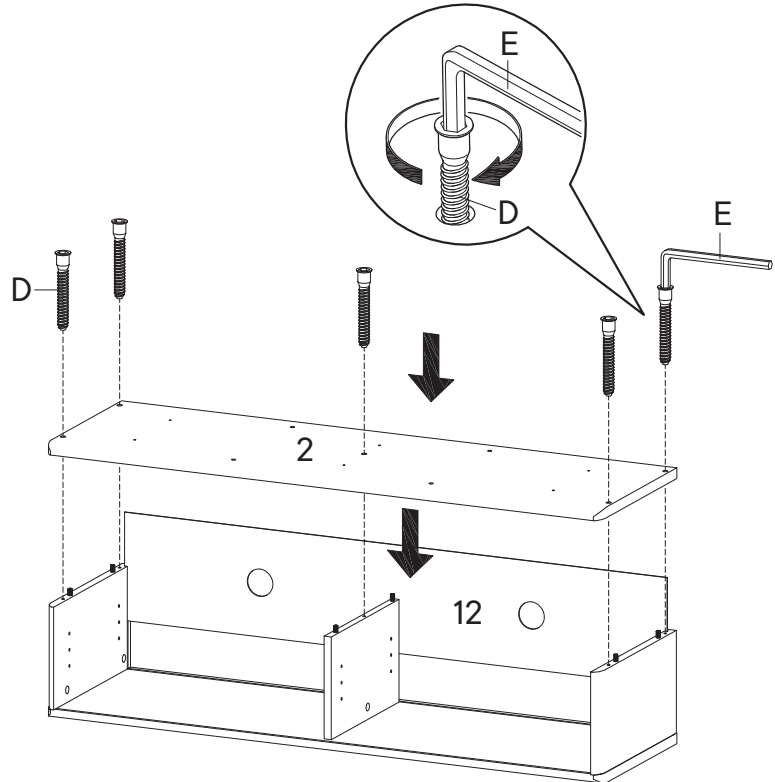
Step 3

HARDWARE

- D** Screw M 7 x 50 mm x5
- E** Allen Key x1

COMPONENTS

- 2** Bottom Board x1
- 12** Back Board x1



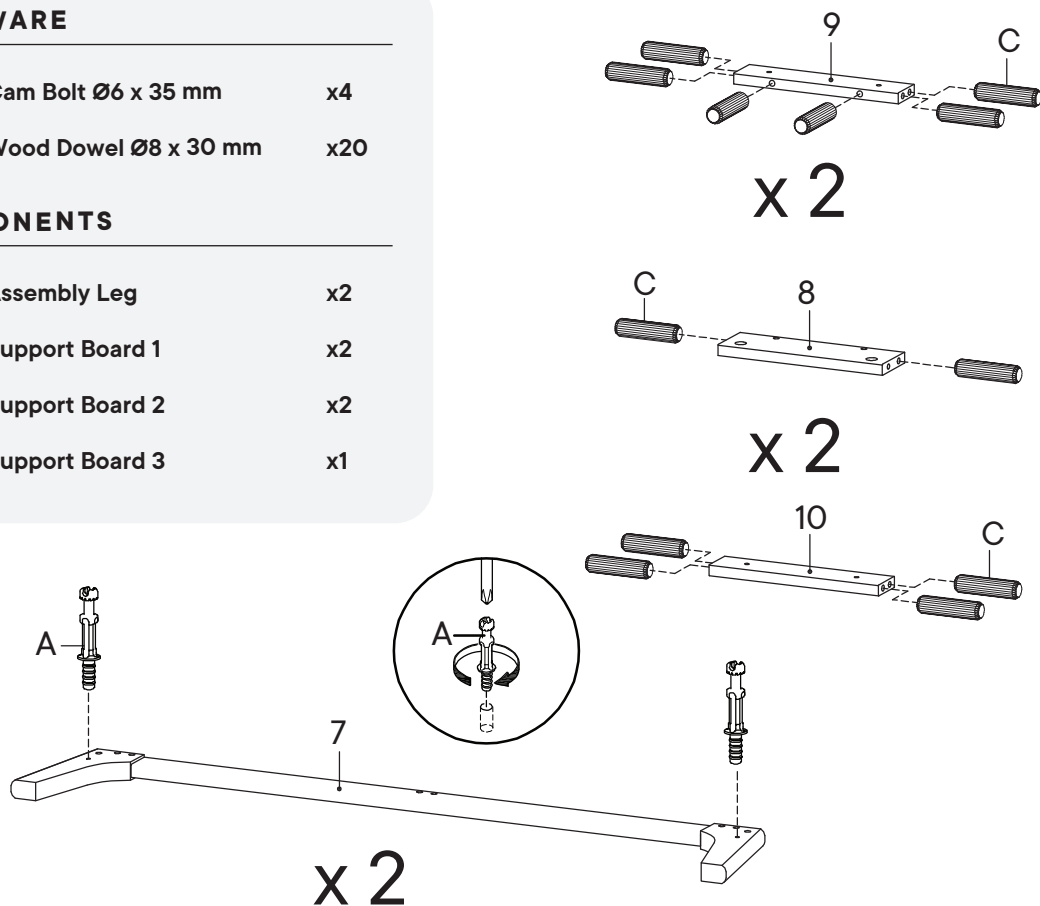
Step 4

HARDWARE

- A** Cam Bolt Ø6 x 35 mm x4
- C** Wood Dowel Ø8 x 30 mm x20

COMPONENTS

- 7** Assembly Leg x2
- 8** Support Board 1 x2
- 9** Support Board 2 x2
- 10** Support Board 3 x1



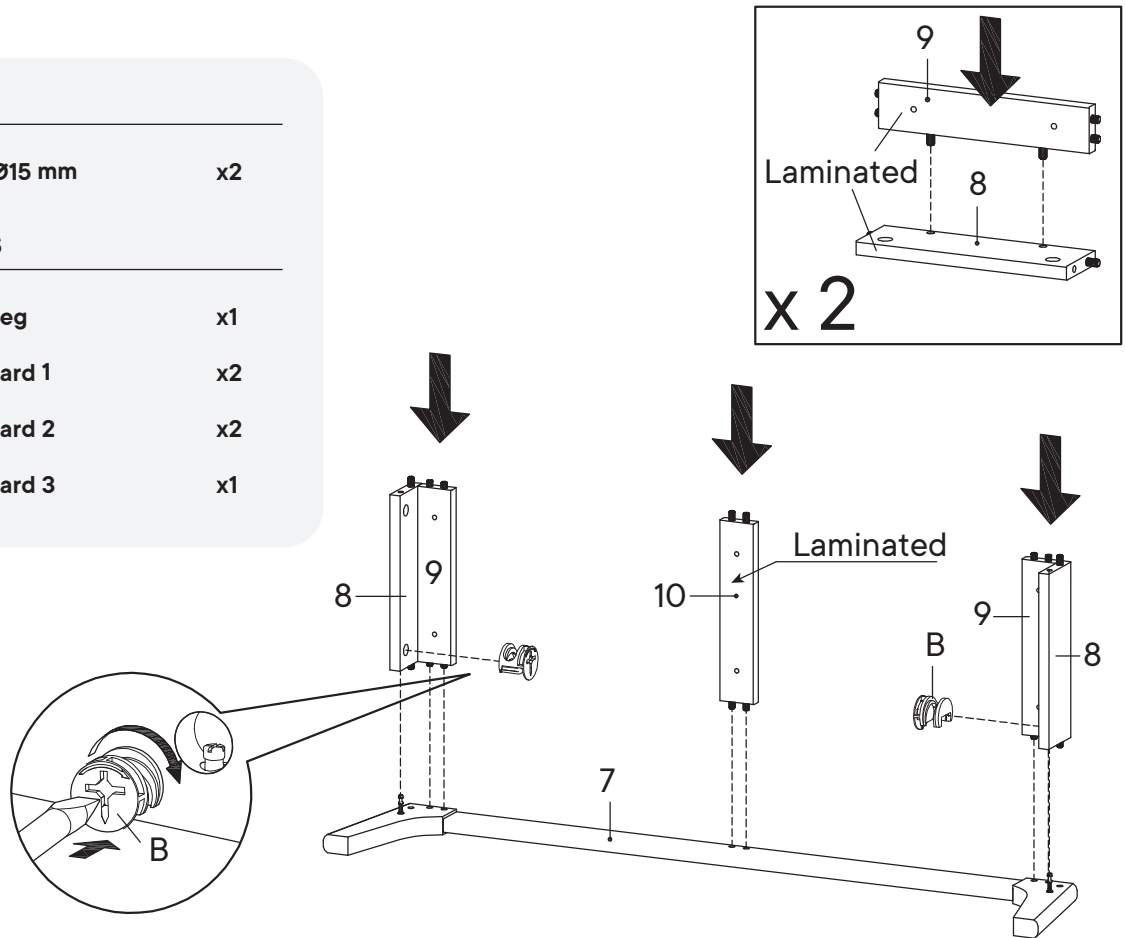
Step 5

HARDWARE

- B** Cam Lock Ø15 mm x2

COMPONENTS

- 7** Assembly Leg x1
8 Support Board 1 x2
9 Support Board 2 x2
10 Support Board 3 x1



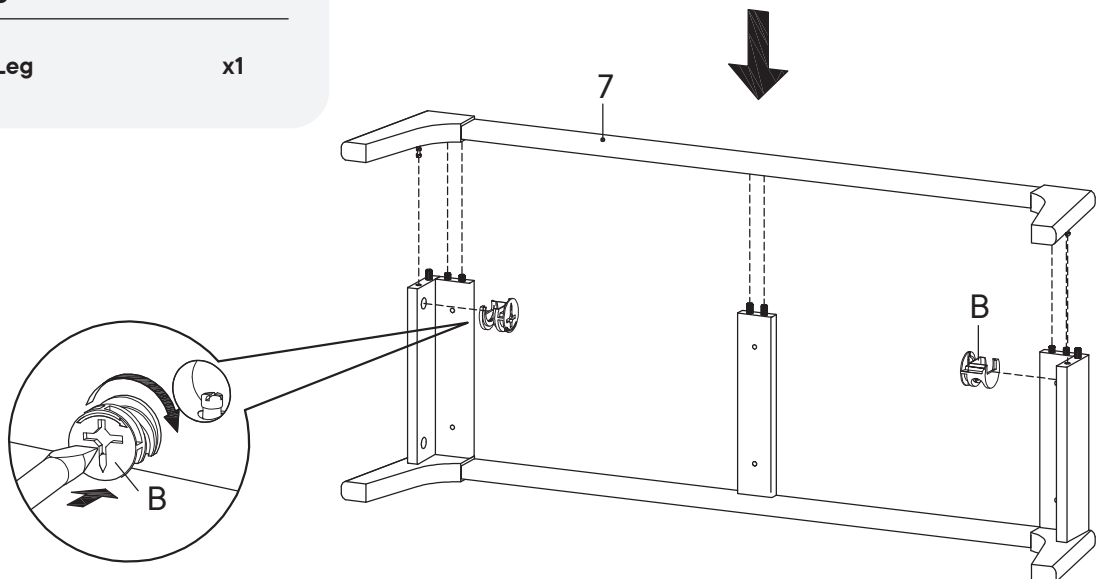
Step 6

HARDWARE

- B** Cam Lock Ø15 mm x2

COMPONENTS

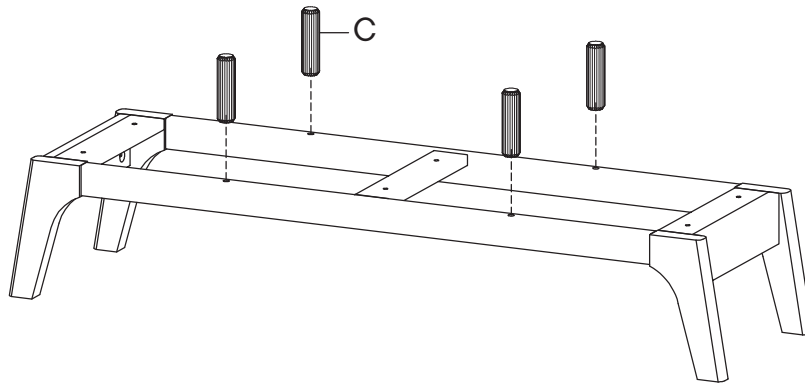
- 7** Assembly Leg x1



Step 7

HARDWARE

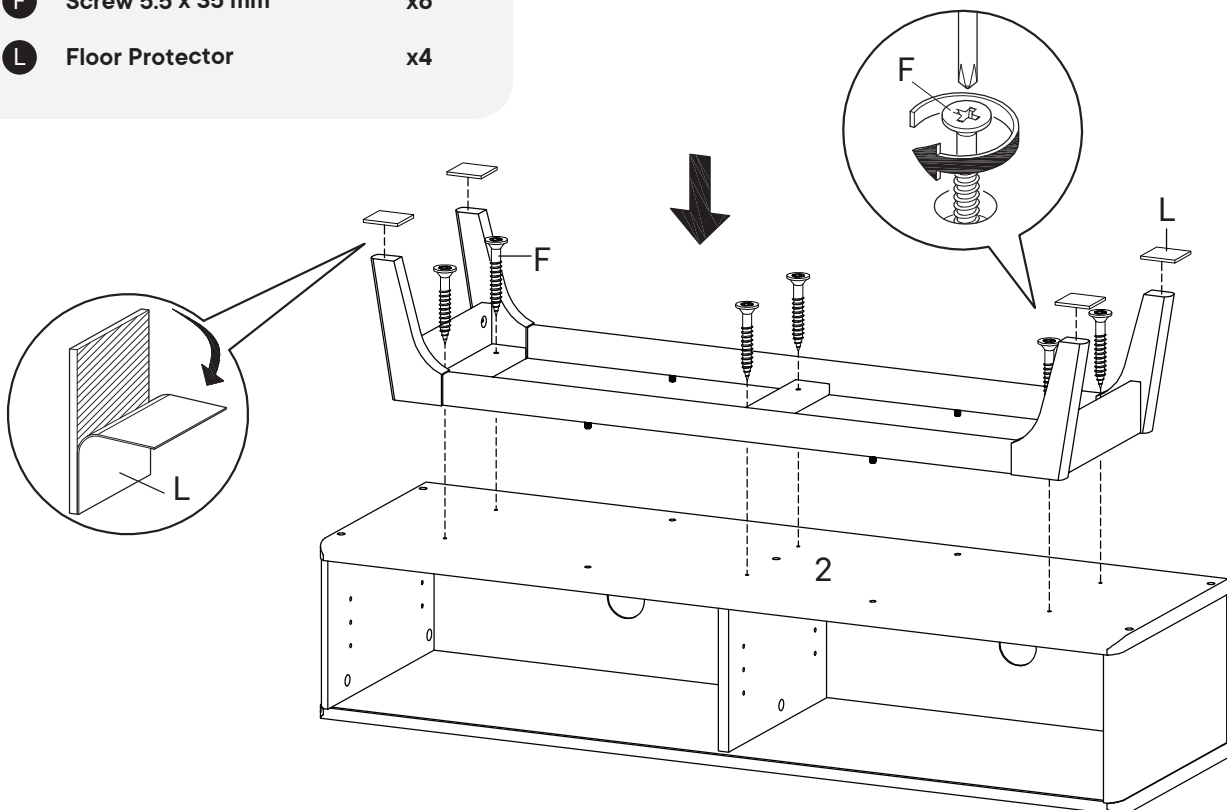
- C** Wood Dowel Ø8 x 30 mm x4



Step 8

HARDWARE

- F** Screw 5.5 x 35 mm x6
L Floor Protector x4



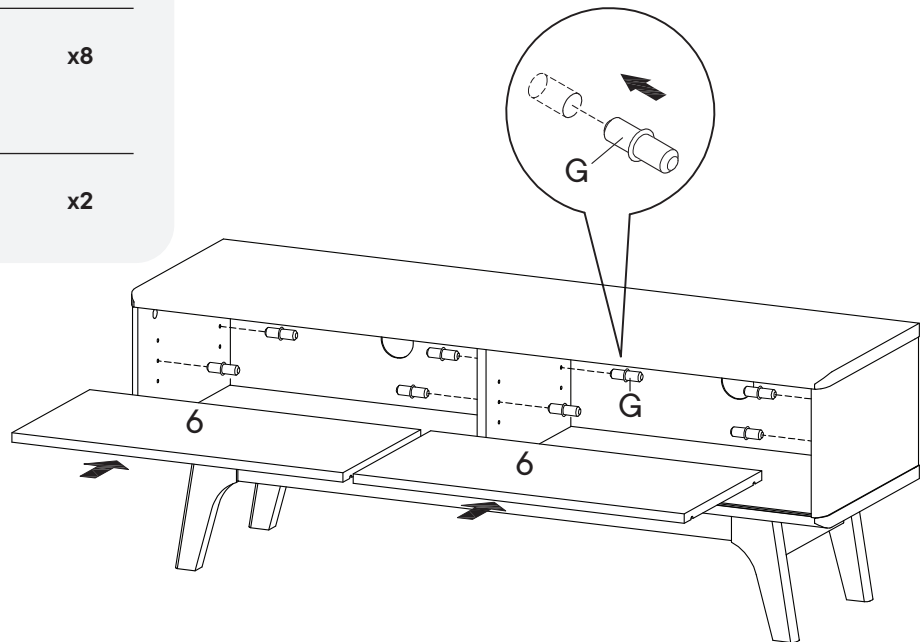
Step 9

HARDWARE

G Shelf Pin x8

COMPONENTS

6 Adjustable Shelf x2



Step 10

HARDWARE

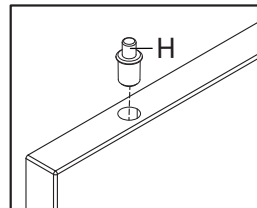
H Pin Sliding Top x2

I Pin Sliding Bottom x2

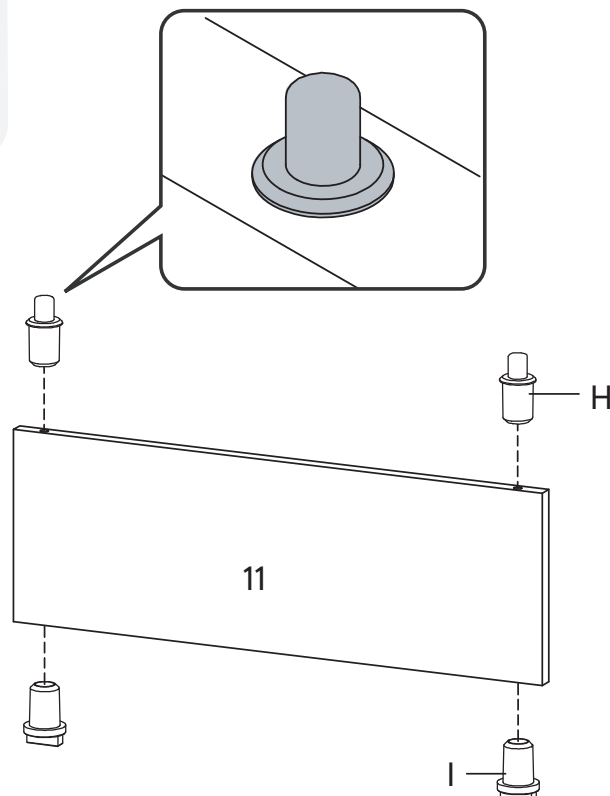
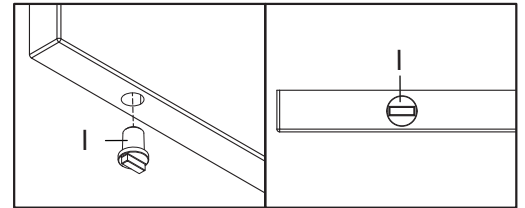
COMPONENTS

11 Wooden Door x1

UPPER SIDE



BOTTOM SIDE



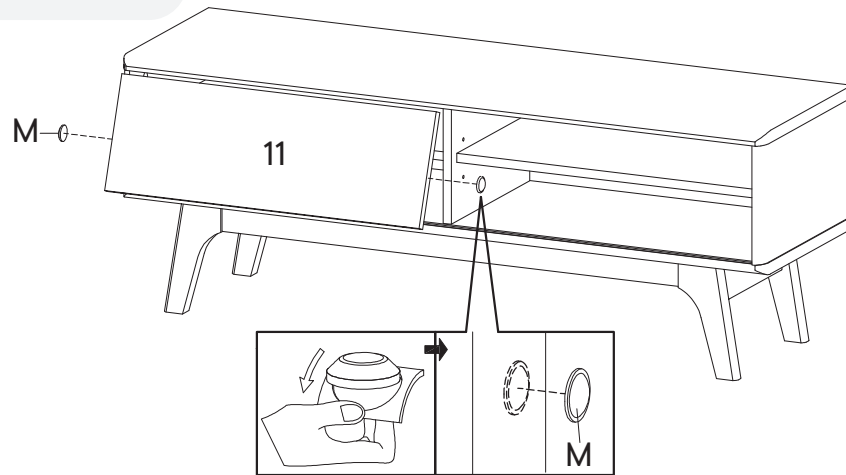
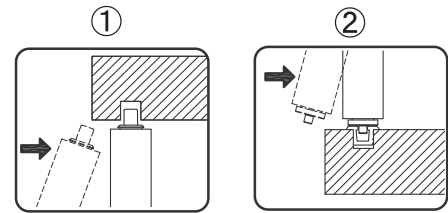
Step 11

HARDWARE

M Silicon Bumper x2

COMPONENT

11 Wooden Door x1

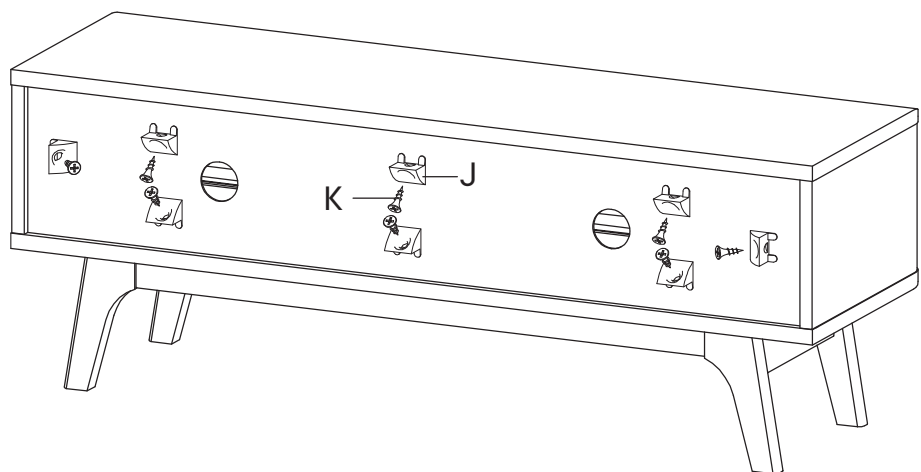
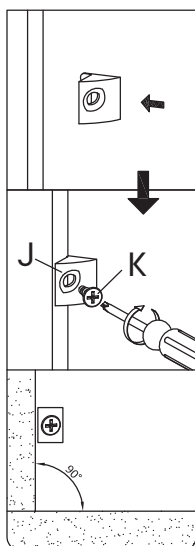


Step 12

HARDWARE

J Wedge x8

K Screw M 3.5 x 15.5 mm x8



Great job!

TV Stand assembly is complete.



CARING FOR YOUR ITEM

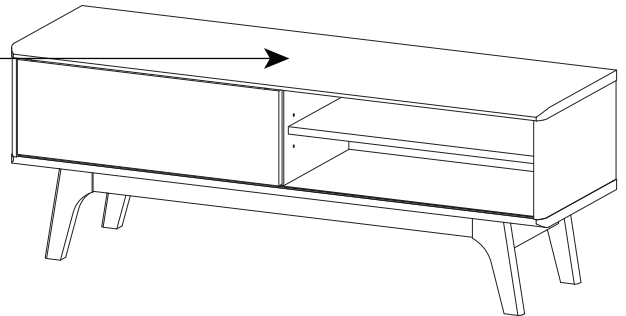
Indoor use only.

Not contract grade.

Clean using a non-abrasive cloth and a mild cleaner.

Never use harsh chemicals, as they could damage the finish or integrity of the item.

Max 45.4Kgs



CONNECT WITH US!



Tag us **@modway_furniture** and **#modway** for a chance to be featured.